

COMPANY	CARBON ENERGY INT.	WELL	"WNS MENASHA" #32-1
FIELD	WILDCAT	COUNTY	COOS
STATE	OREGON	LOCATION	2130 FSL & 2399 FWL OF:
LOGGING MEASURED FROM	KB	Elev.	185.0 F
PERMANENT DATUM	KB	18.0 F	above Perm. Datum
DATE	09-NOV-1993	API SERIAL NO.	36-011-00026
DEPTH DRILLER	ONE	SECT.	32
DEPTH LOGGER (SCH.)	1157.0 F	TWP.	26S
BIT LOG INTERVAL	1151.0 F	RANGE	13W
TOP LOG INTERVAL	154.0 F	Elev.	185.0 F
CEASING-DRILLER	9 5/8	GL	185.0 F
CEASING-LOGGER	154.0 F	Other Services:	D.L./GR LIT/O/NL/GR SHIT
BIT SIZE	8 3/4		
TYPE FLUID IN HOLE	FRESH		
DEMS.	8.90 LB/G		
PH	10.4		
SOURCE OF SAMPLE	FLOWLINE		
Rmt @ Meas. Temp.	6.510 OHMM		
Rmt @ Meas. Temp.	6.850 OHMM		
Rmt @ Meas. Temp.	4.470 OHMM		
Rmt @ Meas. Temp.	MEASURED		
Rmt @ BHT	3.838 OHMM		
Circulation Ended	17:00 9-NOV-93		
Logger on Bottom	21:00 9-NOV-93		
Max. Rec. Temp.	82.0 DEGF		
Equlp.	8504		
Recorded By	M. DEMSKI		
Witnessed By	S. APPALONIN		

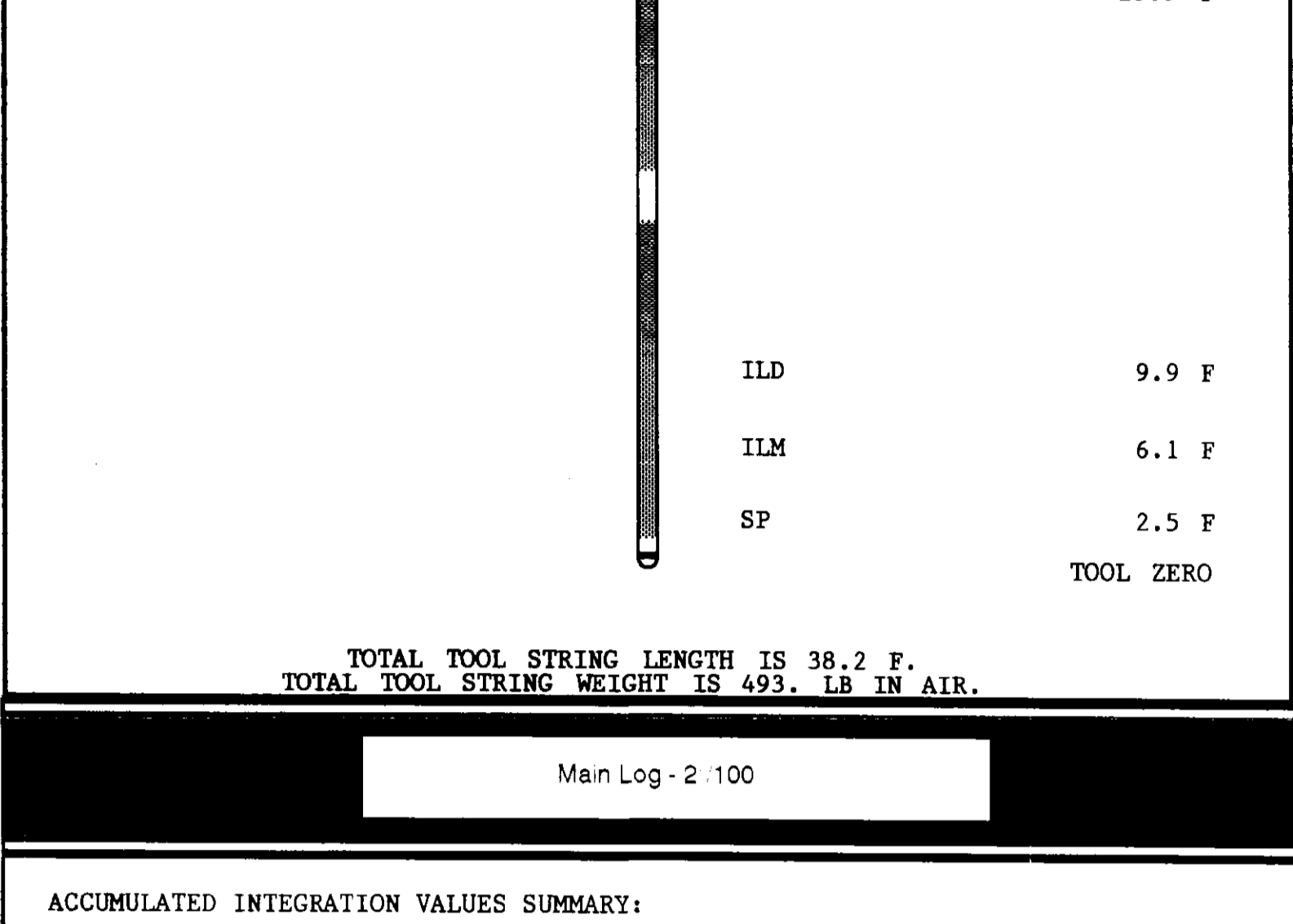
The well name, location and borehole reference data were furnished by the customer.

All interpretations are opinions based on inferences from electrical or other measurements and we cannot, and do not guarantee the accuracy or correctness of any interpretations, and we shall not, except in the case of gross or willful negligence on our part, be liable or responsible for any loss, costs, damages or expenses incurred or sustained by anyone resulting from any interpretations made by any of our officers, agents or employees. These interpretations are also subject to Clause 4 of our General Terms and Conditions as set out in our current Price Schedule.

Run No.	ONE
Service Order No.	824386
Drilling Fluid Level	5.0 F
Salinity	
Rmt @ BHT	4.618 OHMM @ 82.0 DEGF @
Rmc @ BHT	3.013 OHMM @ 82.0 DEGF @
Logging Speed	3600.0 F/HR

EQUIPMENT DATA	
Tool Number 1	DIS-EB 1342
Tool Number 2	DIC-DA 1386
Tool Number 3	MCD-DA 683
Tool Number 4	SGC-JC 3206
Tool Number 5	IEM-BD 304
Tool Number 6	NLM-BC 207
Tool Number 7	
Tool Number 8	
Tool Number 9	
Tool Number 10	
Tool Number 11	
Tool Number 12	

REMARKS: TWO 1.5" STANDOFFS RUN ON INDUCTION TOOL
SOME HEADER INFORMATION NOT AVAILABLE AT WELLSITE

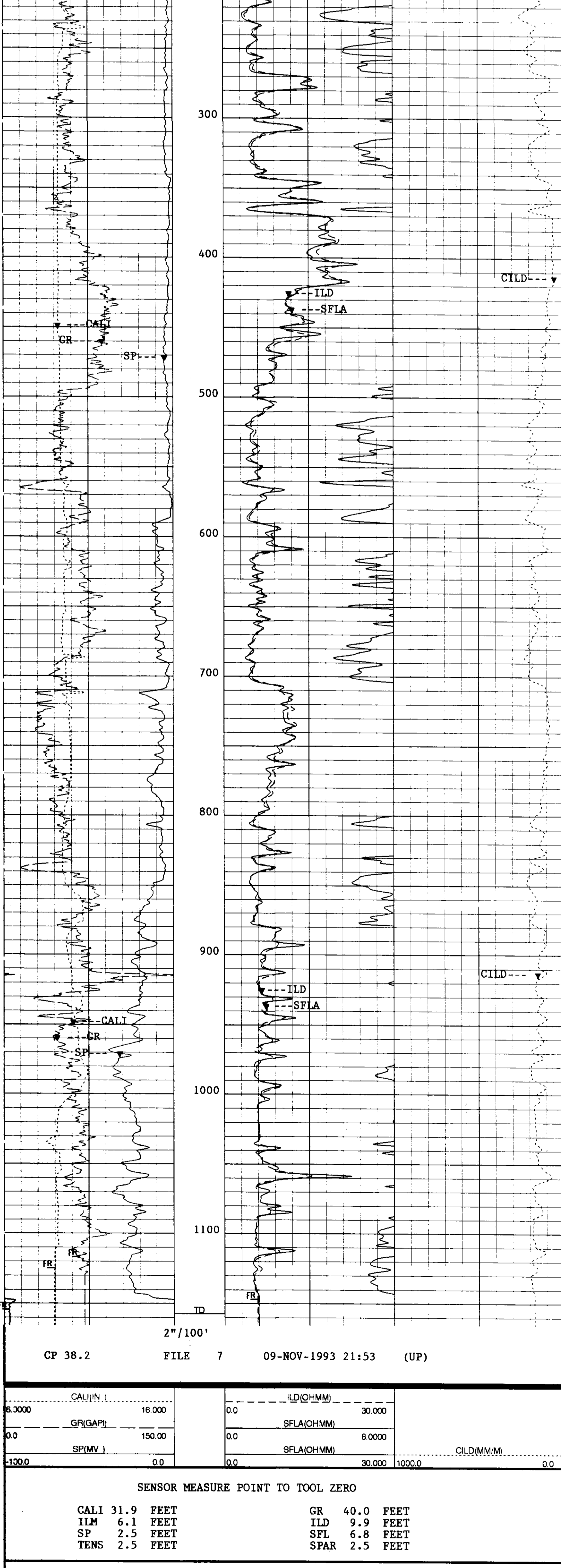


TOTAL TOOL STRING LENGTH IS 38.2 F.
TOTAL TOOL STRING WEIGHT IS 493. LB IN AIR.

Main Log - 2:100

ACCUMULATED INTEGRATION VALUES SUMMARY:
Integrated Hole Volume: 519.792 F3 FROM 1157.00 F TO 154.000 F
Integrated Cement Volume: 251.735 F3 FROM 1157.00 F TO 154.000 F
(ASSUMING 7.00000 IN O.D. CASING)

CALI(IN.)	16.000	ILD(OHMM)	30.000
GR(GAPI)	150.00	SFLA(OHMM)	6.0000
SP(MV)	0.0	SFLA(OHMM)	30.000
	0.0		1000.0
			0.0



CALI(IN.)	16.000	ILD(OHMM)	30.000
GR(GAPI)	150.00	SFLA(OHMM)	6.0000
SP(MV)	0.0	SFLA(OHMM)	30.000
	0.0		1000.0
			0.0

SENSOR MEASURE POINT TO TOOL ZERO	
CALI 31.9 FEET	GR 40.0 FEET
ILM 6.1 FEET	ILD 9.9 FEET
SP 2.5 FEET	SFL 6.8 FEET
TENS 2.5 FEET	SPAR 2.5 FEET

PARAMETERS		
PARAMETER	VALUE	UNIT
WMUD - Weight of Mud	8.90000	LB/G
MSEC - Medium Sonde Error Correction	8.00000	MM/M
SBR - Shoulder Bed Resistivity	1.00000	OHMM
DSEC - Deep Sonde Error Correction	6.70000	MM/M
FCD - Future Casing Diameter	7.00000	IN
NCJT - NGI Calibration Jig Type	GSRV	
BS - Bit Size	8.75000	IN
BHS - BoreHole Status (Open or Cased)	OPEN	

COMPANY	CARBON ENERGY INT.	SCHL	FR 1151.0 F
WELL	"WNS MENASHA" #32-1	SCHL	TD 1157.0 F
FIELD	WILDCAT	DRLR	TD 1158.0 F
COUNTY	COOS	Elev.	KB 183.0 F
STATE	OREGON	DF	182.0 F
		GL	165.0 F