

3000-LE COMPENSATED SONIC 2"

CSU

CONFIDENTIAL

COMPANY: DIAMOND SHARROCK CORPORATION
 WELL: HATZEK 822-19
 FIELD: WILDECAT
 COUNTY: CLATSOP
 STATE: OREGON
 LOCATION: 1945' SOUTH 21ST. EAST
 SEC: 19 OF NORTHWEST 1/4 6M
 RGE: 6M
 PERMANENT DATUM: GL
 ELEVATION: 636.0'
 LEG. HEIGHT FROM ADJAC. PERM. DATUM: 9.0'
 DRG. MEASURED FROM: KB
 ELEVATION: 645.0'
 DT: 636.0'

OTHER SERVICES:
 DIL
 FDC/CH/CR
 HLT
 CTS
 CST

PROGRAM:
 TAP: 4
 SRT: 4
 DROG: 1
 DRG: 1
 38392

TYPE FLUID IN MOLE: LHM SOLIDS NON DISPERSED
 DENSITY: 10.7 LB/G
 VISCOSITY: 55.0 S
 PH: 10.1
 FLUID LOSS: 5.2 CC
 SOURCE OF SAMPLE:
 RNF: 1.280 OHMM AT 74.0 DEGF
 RMC: 2.110 OHMM AT 52.0 DEGF
 RMC: 1.680 OHMM AT 52.0 DEGF
 SOURCE RNF/RMC: MEAS:MEAS
 RM AT BHT: 0.071 OHMM AT 112. DEGF
 RNF AT BHT: 1.085 OHMM AT 112. DEGF
 RMC AT BHT: 0.092 OHMM AT 112. DEGF

TIME CIRC. STOPPED: 0000 3/3
 TIME LOGGER ON BTH: 0530 3/3
 MAX. REC. TEMP: 112.0 DEGF
 LOGGING UNIT NO: 8126
 LOGGING UNIT LOC: SACRAMENTO
 RECORDED BY: BURNISSON
 WITNESSED BY: WILSON

REMARKS:

EQUIPMENT NUMBERS-
 DIS-EA 457 DIC-DA 342 MCD-DA 305 SLC-FA 1861
 SLS-RC 346 IEM-BD 292 SLM-DA 428

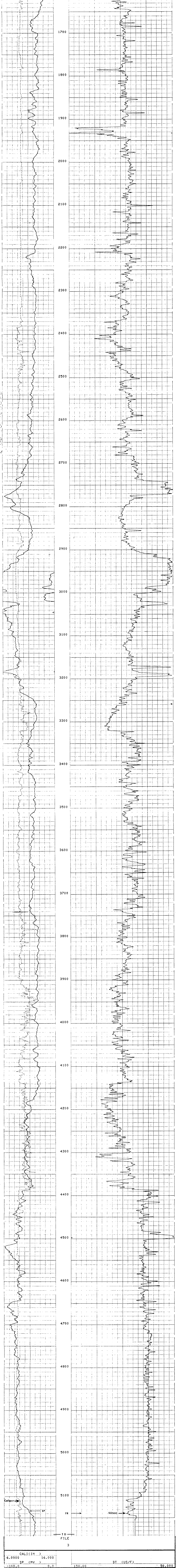
ALL INTERPRETATIONS ARE OPINIONS BASED ON INFERENCES FROM ELECTRICAL OR OTHER MEASUREMENTS AND WE CANNOT, AND DO NOT GUARANTEE THE ACCURACY OR CORRECTNESS OF ANY INTERPRETATIONS, AND WE SHALL NOT, EXCEPT IN THE CASE OF GROSS OR WILLFUL NEGLIGENCE ON OUR PART, BE LIABLE OR RESPONSIBLE FOR ANY LOSS, COSTS, DAMAGES OR EXPENSES INCURRED OR SUSTAINED BY ANYONE RESULTING FROM ANY INTERPRETATION MADE BY ANY OF OUR OFFICERS, AGENTS OR EMPLOYEES. THESE INTERPRETATIONS ARE ALSO SUBJECT TO OUR GENERAL TERMS AND CONDITIONS AS SET FORTH IN OUR CURRENT PRICE SCHEDULE.

FILE

4

CAL.(IN.) 6.0000 DT (US/F) 150.00 50.000

SP (MV) 0.0



FILE 3

CAL.(IN.) 6.0000 DT (US/F) 150.00 50.000

SP (MV) 0.0

SENSOR MEASURE		POINT TO TENSION REFERENCE POINT	
AMPL	41.4 FEET	DT	38.9 FEET
SRAT	38.9 FEET	CSL	41.4 FEET
CALI	29.3 FEET	TT	41.4 FEET
SFL	3.9 FEET	ILD	6.9 FEET
SP	.0 FEET	ILM	3.3 FEET
TENS	.0 FEET	SPAR	.0 FEET
NOIS	33.2 FEET		

PARAMETERS					
NAME	VALUE	UNIT	NAME	VALUE	UNIT
CDTS	100.000		BS	8.75000	IN
DTF	189.000	US/F	DTM	56.0000	US/F
SBR	1.00000	OHMM	ISEC	11.1000	MMHD
SPH1	0.62000		ILM	9.00000	
DD	0.0	F	FEXP	2.15000	
			BHS	OPEN	

COMPANY: DIAMOND SHARROCK CORPORATION

WELL: HATZEK 822-19

FIELD: WILDECAT

COUNTY: CLATSOP STATE: OREGON

SCHL FR 5139.0'
 SCHL TD 5188.0'
 DRIL TD 5195.0'
 Elev: KB 645.0'
 DF N/A
 DT 636.0'