

WIZ-01-03-19-96

DUAL INDUCTION-SFL 2"

CSU

COMPANY: DIAMOND SHAMROCK CORPORATION

WELL: HATZEK 422-19

FIELD: WILDHOP

COUNTY: CLATSOP

STATE: OREGON

LOCATION: 19451 SOUTH 21ST. EAST

SECT: 19 OF NORTHWEST CORNER

TWP: 6N

RGE: 6W

PERMANENT DATUM: GL

ELEV. OF PERM. DATUM: 636.0

ELEVATIONS: KPI 645.0

LDG. MEASURED FROM: PK 3 DATUM

DRG. MEASURED FROM: DLI 636.0

DATE: 1 MAR 83

RUN NO: 1

DEPTH-DRILLER: 5195.0

DEPTH-LOGGER: 5188.0

TDP LOG INTERVAL: 1028.0

CASING-DRILLER: 1028

CASING-LOGGER: 9 3/8

CRUISING: 8 3/4

BIT SIZE: 8 3/4

OTHER SERVICES: BNC FDC/CHL/GR HDT CIS

PROGRAM: TAPES 22.4

TAPE NO: 303582

SERVICE: 303582

TYPE FLUID IN HOLE: LOW SOLIDS NON DISPERSED
 DENSITY: 10.7 LB/G
 VISCOSITY: 55.0 S
 PH: 10.1
 FLUID LOSS: 5.2 C3
 SOURCE OF SAMPLE: FLDLINE
 RH: 1.280 DHMM AT 74.0 DEGF
 RMC: 2.190 DHMM AT 52.0 DEGF
 RMC: 1.680 DHMM AT 52.0 DEGF
 SOURCE RMF/RMC: MEAS/MEAS
 RH AT BHT: 0.871 DHMM AT 112. DEGF
 RMF AT BHT: 1.085 DHMM AT 112. DEGF
 RMC AT BHT: 0.832 DHMM AT 112. DEGF

TIME CIRC. STOPPED: 0000 3/3
 TIME LOGGER ON BTH: 0530 3/3
 MAX. REC. TEMP: 112.0 DEGF

LOGGING UNIT NO: 8126
 LOGGING UNIT LOC: SACRAMENTO
 RECORDED BY: BURNISON
 WITNESSED BY: WILSON

REMARKS:

EQUIPMENT NUMBERS-

DIS-EA 457 DIC-DA 342 MCD-DA 305 SLC-FA 1261
 SLS-RC 346 IEM-BD 232 SLM-DA 428

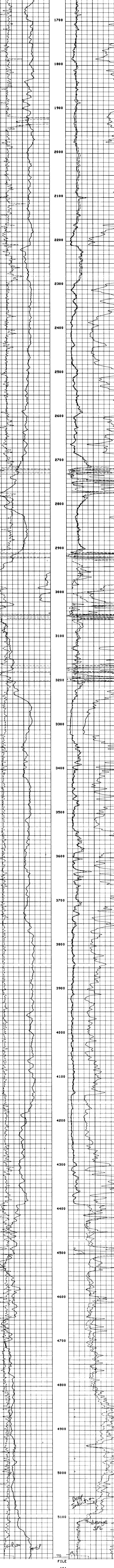
ALL INTERPRETATIONS ARE OPINIONS BASED ON INFERENCES FROM ELECTRICAL OR OTHER MEASUREMENTS AND WE CANNOT, AND DO NOT GUARANTEE THE ACCURACY OR CORRECTNESS OF ANY INTERPRETATION, AND WE SHALL NOT, EXCEPT IN THE CASE OF GROSS OR WILLFUL NEGLIGENCE ON OUR PART, BE LIABLE OR RESPONSIBLE FOR ANY LOSS, COSTS, DAMAGES OR EXPENSES INCURRED OR SUSTAINED BY ANYONE RESULTING FROM ANY INTERPRETATION MADE BY ANY OF OUR OFFICERS, AGENTS OR EMPLOYEES. THESE INTERPRETATIONS ARE ALSO SUBJECT TO OUR GENERAL TERMS AND CONDITIONS AS SET OUT IN OUR CURRENT PRICE SCHEDULE.

FILE 102

RWA (DHMM) 0.0 3.0000
 SP (MV) -100.0 0.0

ILD (DHMM) 0.0 30.000
 SFLA(DHMM) 0.0 30.000
 SFLA(DHMM) 0.0 6.0000 1000.0
 CILD(MMHD) 0.0

FILE 101



FILE 101

RWA (DHMM) 0.0 3.0000
 SP (MV) -100.0 0.0

ILD (DHMM) 0.0 30.000
 SFLA(DHMM) 0.0 30.000
 SFLA(DHMM) 0.0 6.0000 1000.0
 CILD(MMHD) 0.0

SENSOR MEASURE POINT TO TENSION POINT

AMPL 41.4 FEET DT 38.9 FEET
 SRAT 38.9 FEET CBL 41.4 FEET
 CALI 29.3 FEET TT 41.4 FEET
 SFL 3.9 FEET ILL 6.9 FEET
 SP .0 FEET ILM 3.3 FEET
 TENS .0 FEET SPAR .0 FEET
 NDIS 33.2 FEET

PARAMETERS

NAME	VALUE	UNIT	NAME	VALUE	UNIT
CDTS	100.000		BS	8.75000	IN
DTF	189.000	US/F	DTM	56.0000	US/F
SBR	1.00000	DHMM	BSEC	11.1000	MHHD
FPHU	SPHI		MSEC	9.00000	MHHD
DD	0.0	F	FEXP	2.15000	
			BHS	OPEN	