

Schlumberger HIGH RESOLUTION CONTINUOUS DIPIETER

WELL: WATZER 30-1
 FIELD: WIDOCAT
 COUNTY: CLATSOP STATE OREGON
 COMPANY: QUINCY Petroleum Corp
 PERMANENT DEPTH: 6.2
 DATE: 12/14/80
 LOG MEASURED FROM: 6.0
 DRILLING MEASURED FROM: 6.0
 ELEVATION: 820.7
 ABOVE FIRM DATUM: 820.7
 ELEVATION: 884.2
 ABOVE FIRM DATUM: 884.2

Run No.	7269
Depth (Depth (Sht))	7042
Depth (Depth (Sht))	7042
Depth (Depth (Sht))	6538
Depth (Depth (Sht))	6538

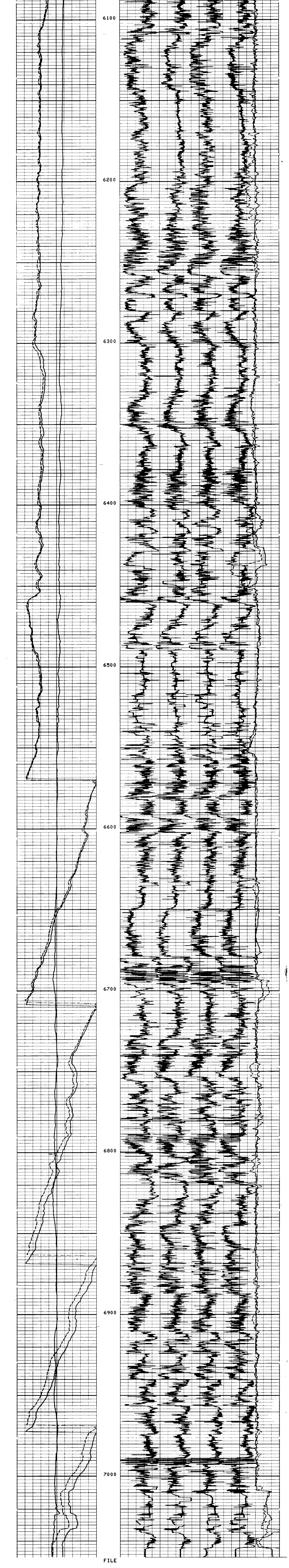
TOOL AZIMUTH AND HOLE DIRECTION CALCULATION DEFINITIONS
 (DHD) HIGH SIDE OF TOOL - Direction from center of tool to upper side of tool. (AZI) AZIMUTH OF REFERENCE ELECTRODE - Clockwise angle from N to REF.
 (N) NORTH - Direction from center of tool to Magnetic North. (RBR) RELATIVE BEARING - Clockwise angle from DHD to REF.
 (REF) REFERENCE ELECTRODE - Direction from center of tool to #1 electrode. (AHD) AZIMUTH OF HOLE DEV. (TOOL AXIS) - Clockwise angle from N to DHD.

Run No.	Tool Type	Roll No.	Interval
1	HDT		
	DPR		
	HDM		
	HDS		
	Adaptor Head		
	5" Film		
	10" Film		
	Analog		
	Circulation Stopped		
	Schl. on Bottom		

PARAMETERS

NAME	UNIT	VALUE	NAME	UNIT	VALUE
STYP	DD		MCT	DEG	36
		0.0	BHS	BHS	OPEN
			BS	INCH	8.750
			FPHI	PHIX	

DEVI<DEG>	9.000	RB<DEG>	360.0	AZIM<DEG>	360.0



PARAMETERS

NAME	UNIT	VALUE	NAME	UNIT	VALUE
STYP	DD		MCT	DEG	36
		0.0	BHS	BHS	OPEN
			BS	INCH	8.750
			FPHI	PHIX	

DEVI<DEG>	9.000	RB<DEG>	360.0	AZIM<DEG>	360.0

PARAMETERS

NAME	UNIT	VALUE	NAME	UNIT	VALUE
STYP	DD		MCT	DEG	36
		0.0	BHS	BHS	OPEN
			BS	INCH	8.750
			FPHI	PHIX	

DEVI<DEG>	9.000	RB<DEG>	360.0	AZIM<DEG>	360.0

PARAMETERS

NAME	UNIT	VALUE	NAME	UNIT	VALUE
STYP	DD		MCT	DEG	36
		0.0	BHS	BHS	OPEN
			BS	INCH	8.750
			FPHI	PHIX	

DEVI<DEG>	9.000	RB<DEG>	360.0	AZIM<DEG>	360.0

PARAMETERS

NAME	UNIT	VALUE	NAME	UNIT	VALUE
STYP	DD		MCT	DEG	36
		0.0	BHS	BHS	OPEN
			BS	INCH	8.750
			FPHI	PHIX	

DEVI<DEG>	9.000	RB<DEG>	360.0	AZIM<DEG>	360.0

BEFORE SURVEY CALIBRATION SUMMARY

PERFORMED: 80/12/24 (VERSION 18.2 80/4/29)

PROGRAM FILE: HDT

HDT CALIPER CALIBRATION SUMMARY

MEASURED	SMALL	LARGE	CALIBRATED	SMALL	LARGE	UNITS
C1	6.6	13.3	6.0	12.0	IN	
C2	6.3	13.3	6.0	12.0	IN	

FILE 3

DEVI<DEG>	9.000	RB<DEG>	360.0	AZIM<DEG>	360.0

FILE 2