

SONDHOLE COMPENSATED SONIC LOG 8"

COMPANY: REICHOLD ENERGY CORPORATION

WELL: WERNER 14-21

FIELD: ST. LOUIS

COUNTY: MARION

STATE: OREGON

LOCATION: 684.5' N & 627.5' E

SEC1: 21

PERMANENT DATUM: GL

ELEVATION: 179.0'

LOG MEASURED FROM: KB

DATE: 9 OCT 1982

RECEIVED-PTJ: NOV 12 1982

OTHER SERVICES- DIL

DEPT-DRILLER: 3354.0

DEPT-LOGGER: 3348.0

TOP LOG INTERVAL: 1206.0

CASING-DRILLER: 1806

CASING-LOGGERS: 1806

BIT SIZE: 6.25"

DEPTH: 3354'

TYPE FLUID IN HOLE: LIGNOSULFONATE
 DENSITY: 9.4 LB/G
 VISCOSITY: 52.0 S
 PH: 9.5
 FLUID LOSS: 4.6 CC
 SOURCE OF SAMPLE: CIRC.
 RH: 2.050 DMM AT 80.0 DEGF
 RWF: 3.060 DMM AT 50.0 DEGF
 RWC: 1.770 DMM AT 62.0 DEGF
 SOURCE RWF/RWC: MEAS. /MEAS.
 RH AT BHT: 1.690 DMM AT 90.0 DEGF
 RWF AT BHT: 1.894 DMM AT 90.0 DEGF
 RWC AT BHT: 1.163 DMM AT 90.0 DEGF

TIME CIRC. STOPPED: 0700
 TIME LOGGER ON BTH.: 1110

MAX. REC. TEMP: 90.0 DEGF

LOGGING UNIT NO: 8216
 LOGGING UNIT LOC: SACRAMENTO
 RECORDED BY: ANDERSEN
 WITNESSED BY: BRUER

REMARKS: SP NOT VALID. ELECTRODE HAS POOR INSULATION

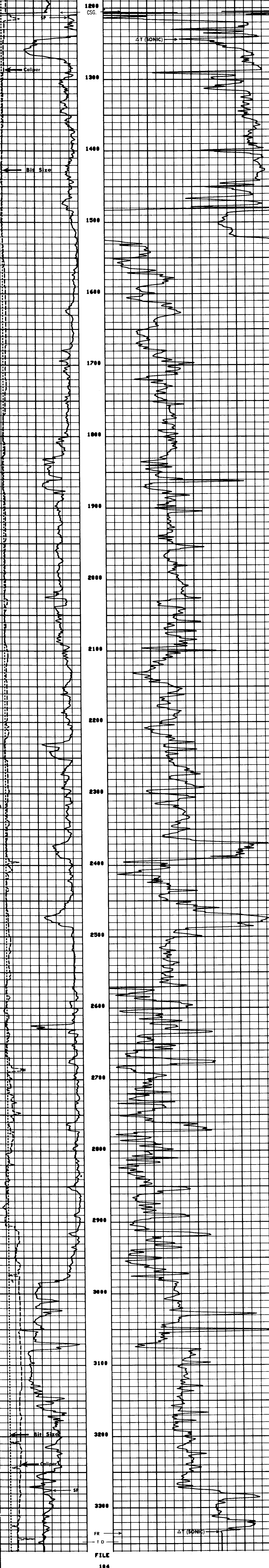
EQUIPMENT NUMBERS- SLS 375 SLC 592 NCB 1502 SLN 1201

ALL INTERPRETATIONS ARE OPINIONS BASED ON INFERENCE FROM ELECTRICAL OR OTHER MEASUREMENTS AND WE CANNOT, AND DO NOT GUARANTEE THE ACCURACY OR CORRECTNESS OF ANY INTERPRETATIONS, AND WE SHALL NOT, EXCEPT IN THE CASE OF GROSS OR WILLFUL NEGLIGENCE ON OUR PART, BE LIABLE OR RESPONSIBLE FOR ANY LOSS, COSTS, DAMAGES OR EXPENSES INCURRED OR SUSTAINED BY ANYONE RESULTING FROM ANY INTERPRETATION MADE BY ANY OF OUR OFFICERS, AGENTS OR EMPLOYEES. THESE INTERPRETATIONS ARE ALSO SUBJECT TO OUR GENERAL TERMS AND CONDITIONS AS SET OUT IN OUR CURRENT PRICE SCHEDULE.

FILE 105

BS (IN)	15.000	BT (US/F)	50.000
CAL (IN)	15.000		
SP (MV)	10.000		
	-20.00	150.00	

FILE 104



FILE 104

BS (IN)	15.000	BT (US/F)	50.000
CAL (IN)	15.000		
SP (MV)	10.000		
	-20.00	150.00	

SENSOR MEASURE POINT TO TENSION REFERENCE POINT

AWPL	12.6	FEET	BT	10.1	FEET
SRAT	10.1	FEET	CBL	12.6	FEET
CALI	.5	FEET	TT	12.6	FEET
SPAR	-4.0	FEET	SP	-4.0	FEET
NOIS	4.3	FEET	TENS	.0	FEET

PARAMETERS

NAME	VALUE	UNIT	NAME	VALUE	UNIT
CBTS	100.000		BS	6.25000	IN
BTH	109.000	US/F	BTH	56.0000	US/F
BD	0.0	F	FPHI	SPHI	

COMPANY: REICHOLD ENERGY CORPORATION

WELL: WERNER 14-21

FIELD: ST. LOUIS

COUNTY: MARION STATE: OREGON

SCHL. FR: 3333.01

SCHL. TD: 3348.01

DRLR. TD: 3354.01

Elev: KB: 179.0'

DF: 178.0'

GL: 178.0'