

COMPANY: DREGON NATURAL GAS DEVEL. CORP.
 WELL: HENNER 34-21
 FIELD: ST. LOUIS
 COUNTY: MADISON
 STATE: OREGON
 LOCATION: 389, 57' NORTH & 1885, 5' HE
 SEC: E1
 T14: S3
 R6E: E4
 PREPARED BY: JG
 ELEV. OF PENN. DATUM: 181.0 F
 ELEV. MEASURED FROM: FPKB
 DMLG. NUMBERED FROM: 18
 DATE: 1993.5 F
 DEPTH: 181.0 F
 PROGRAM: 26.2
 TRACED: 26.2
 SERIALIZED: 26.2
 FILE NO: 43127

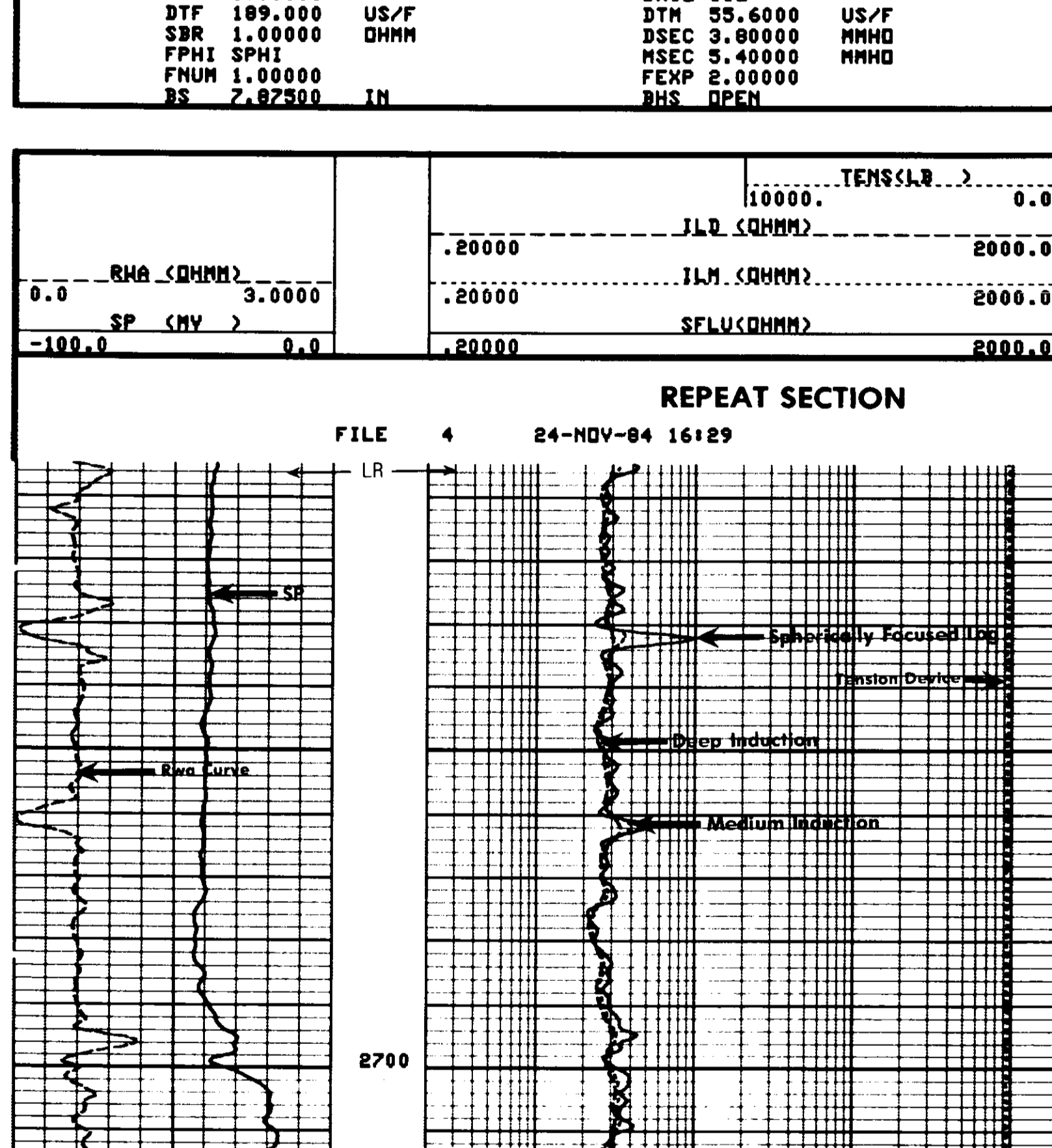
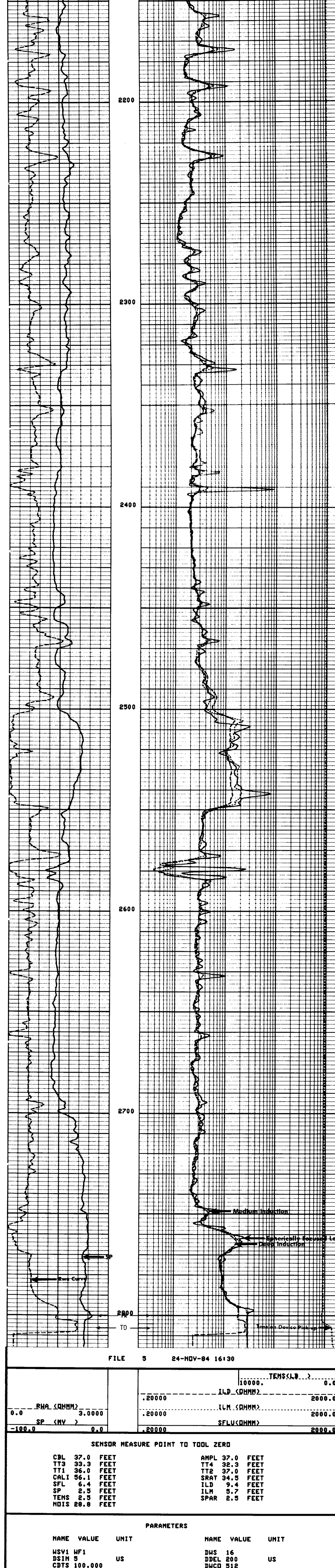
DEPTH-LOGGERS: 2800.0 F
 DEPTH-LOGGERS: 2800.0 F
 B.M. LOG INTERVAL: 2800.0 F
 TOP LOG INTERVAL: 1800.0 F
 CASING-DRILLER: 1800 F
 CASING-LOGGERS: 8 5/8"
 BIT SIZE: 7 7/8"
 DEPTH: 2808 F
 RECORDER: FLD
 JAN 21 1995

TYPE FLUID IN HOLE: GEL/LIGN.
 DENSITY: 9.3 LB/G
 VISCOSITY: 46.0 C
 PH: 11.0
 FLUID LOSS: 6.6 C3
 SOURCE OF SAMPLE: FLO/LINE
 RM: 3.260 DHMM AT 53.0 DEG
 RMF: 3.280 DHMM AT 45.0 DEG
 RMC: 2.790 DHMM AT 47.0 DEG
 SOURCE RMF/RMC: MEAS/MEAS
 RM AT BHT: 1.517 DHMM AT 95.0 DEG
 RMF AT BHT: 1.576 DHMM AT 95.0 DEG
 RMC AT BHT: 1.477 DHMM AT 95.0 DEG
 TIME CIRC. STOPPED: 12:00 11-24
 TIME LOGGER ON BTH.: 16:51 11-24
 MAX. REC. TEMP: 95.0 DEG
 LOGGING UNIT NO: 8178
 LOGGING UNIT LOC: SACRAMENTO
 RECORDED BY: SUTER
 WITNESSED BY: MEYER

REMARKS:
 SALINITY: 350 PPM CL-
 CENTRALIZATION: CHEZ AND RUBBER TINS

EQUIPMENT NUMBERS-
 DIS 1422 DIC 1149 MCD 1507 SLS 346
 SLC 1321 IEM 686 SLM 1281 SDM 1033

ALL INTERPRETATIONS ARE DEFINITIONS BASED ON INFERENCES FROM ELECTRICAL OR OTHER MEASUREMENTS AND I CAN NOT, AND DO NOT GUARANTEE THE ACCURACY OR CORRECTNESS OF ANY INTERPRETATIONS, AND HE SHALL NOT, EXCEPT IN THE CASE OF GROSS OR WILLFUL NEGLIGENCE ON OUR PART, BE LIABLE OR RESPONSIBLE FOR ANY LOSS, COSTS, DAMAGES OR EXPENSES INCURRED OR SUSTAINED BY ANYONE RESULTING FROM ANY INTERPRETATION MADE BY ANY OF OUR OFFICERS, AGENTS OR EMPLOYEES. THESE INTERPRETATIONS ARE ALSO SUBJECT TO OUR GENERAL TERMS AND CONDITIONS AS SET OUT IN OUR CURRENT PRICE SCHEDULE.

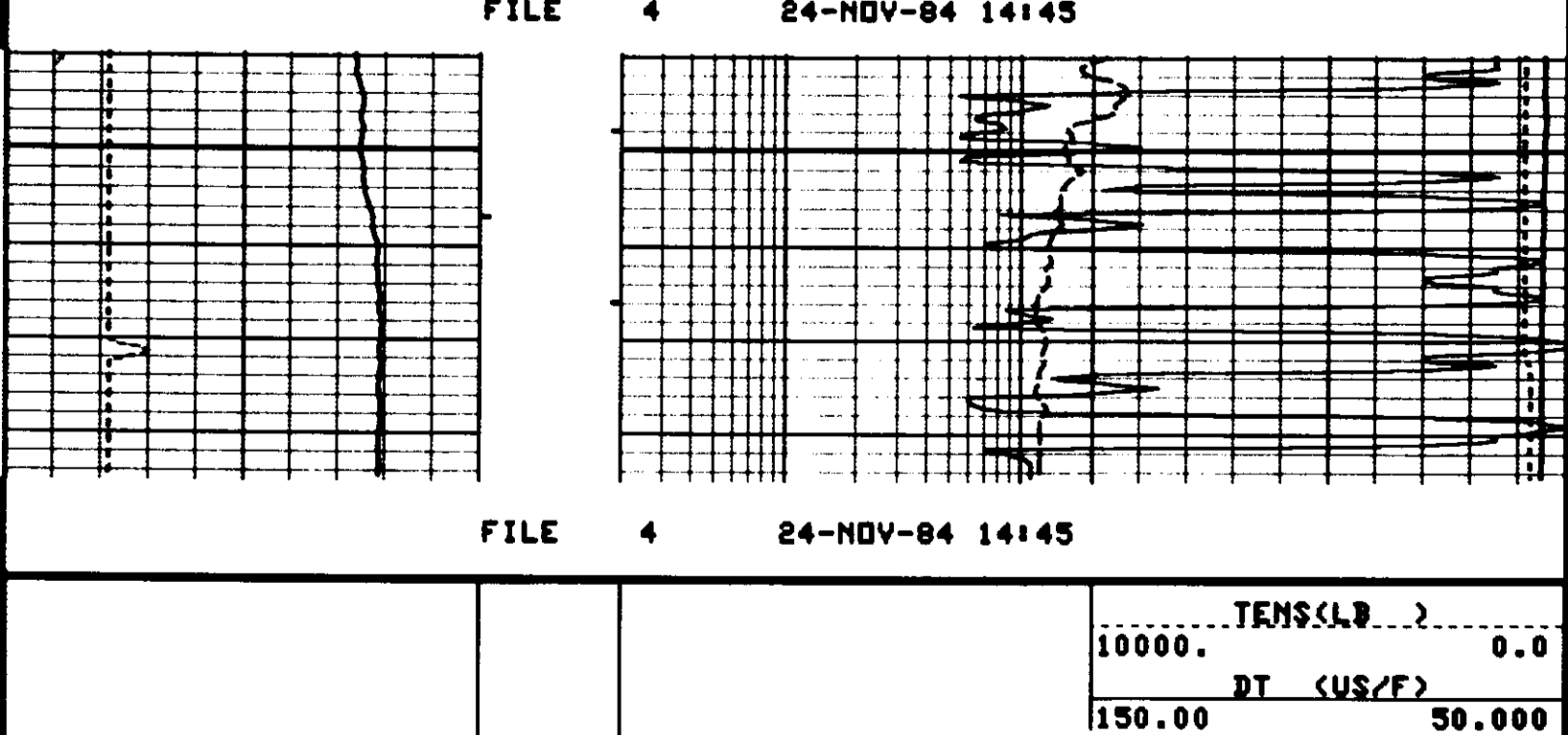
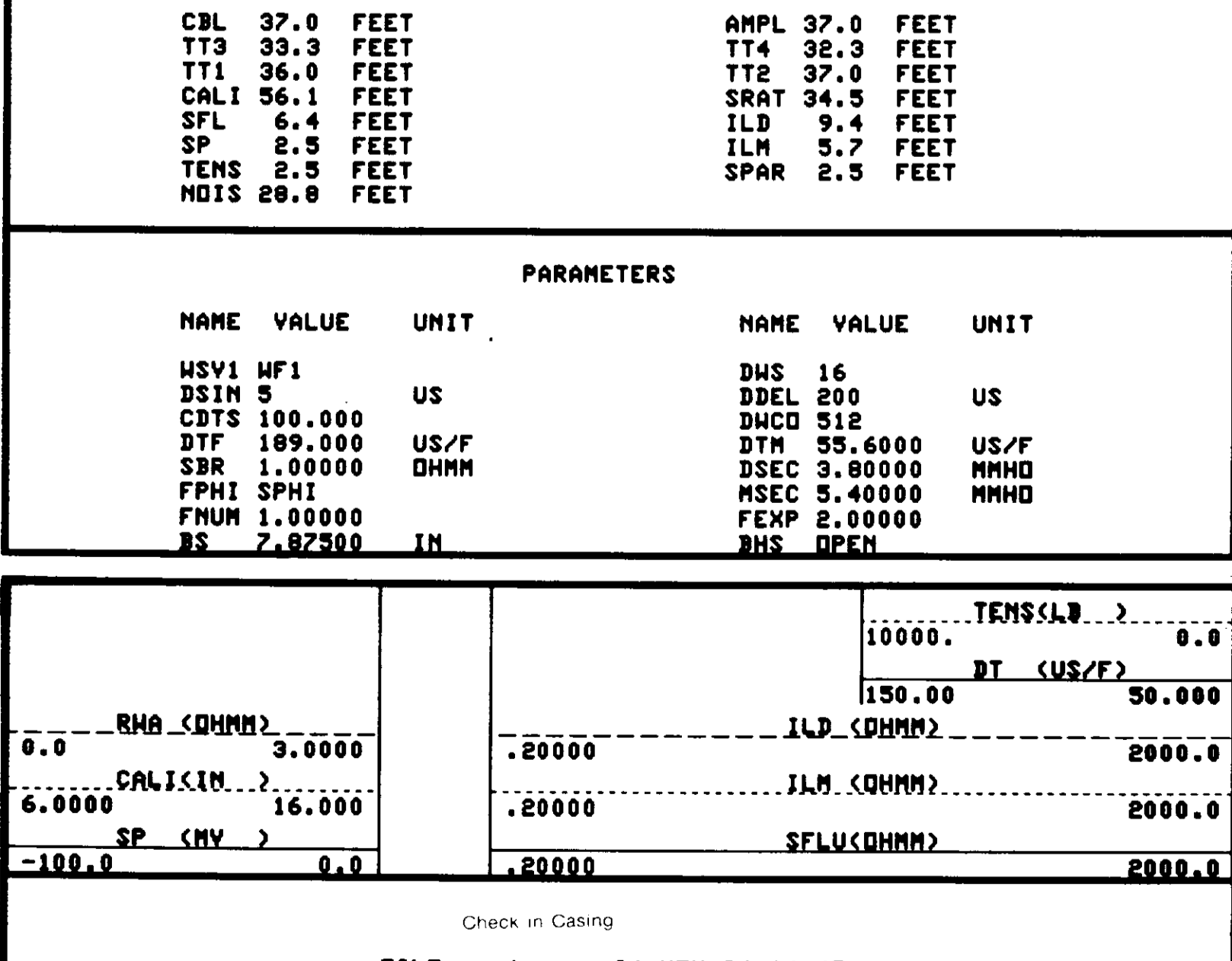


SENSOR MEASURE POINT TO TOOL ZERO

CBL	37.0 FEET	AMPL	37.0 FEET
TT3	33.3 FEET	TT4	32.3 FEET
TY1	36.0 FEET	TY2	37.0 FEET
CALI	56.1 FEET	SRAT	34.5 FEET
SFL	6.4 FEET	ILD	9.4 FEET
SP	2.5 FEET	ILM	5.7 FEET
TENS	2.5 FEET	SPAR	2.5 FEET
NDIS	28.8 FEET		

PARAMETERS

NAME	VALUE	UNIT	NAME	VALUE	UNIT
HSV1 HF1			DHS	16	
DSIN 5		US	DDEL	200	US
CDTS	100.000		DMCD	512	
DTF	189.000	US/F	DTM	55.6000	US/F
SBR	1.00000	DHMM	DSEC	3.80000	MHMD
FPHI	SPHI		MSEC	5.40000	MHMD
FNUM	1.00000		FEXP	2.00000	
RS	7.82500	IN	BHS	OPEN	

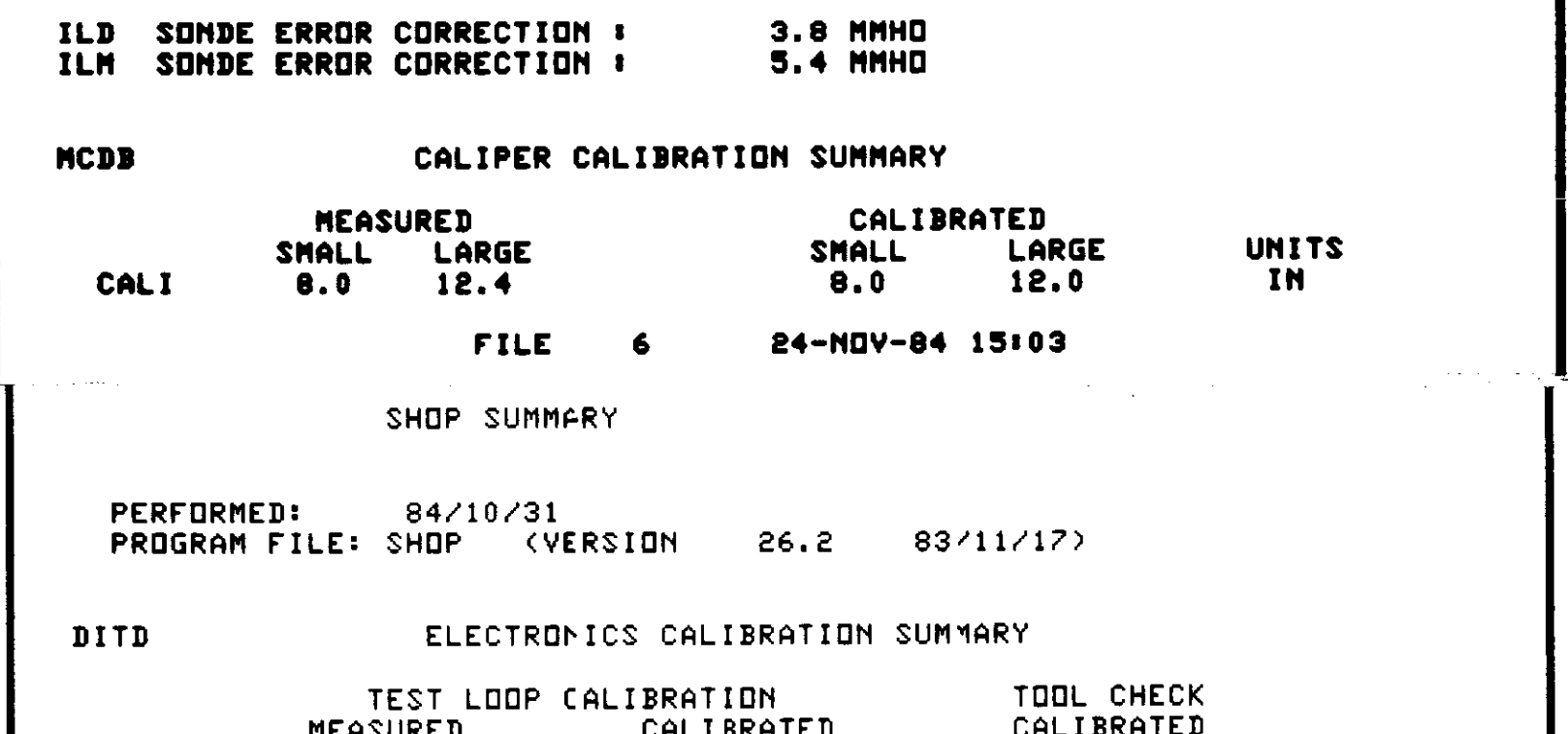
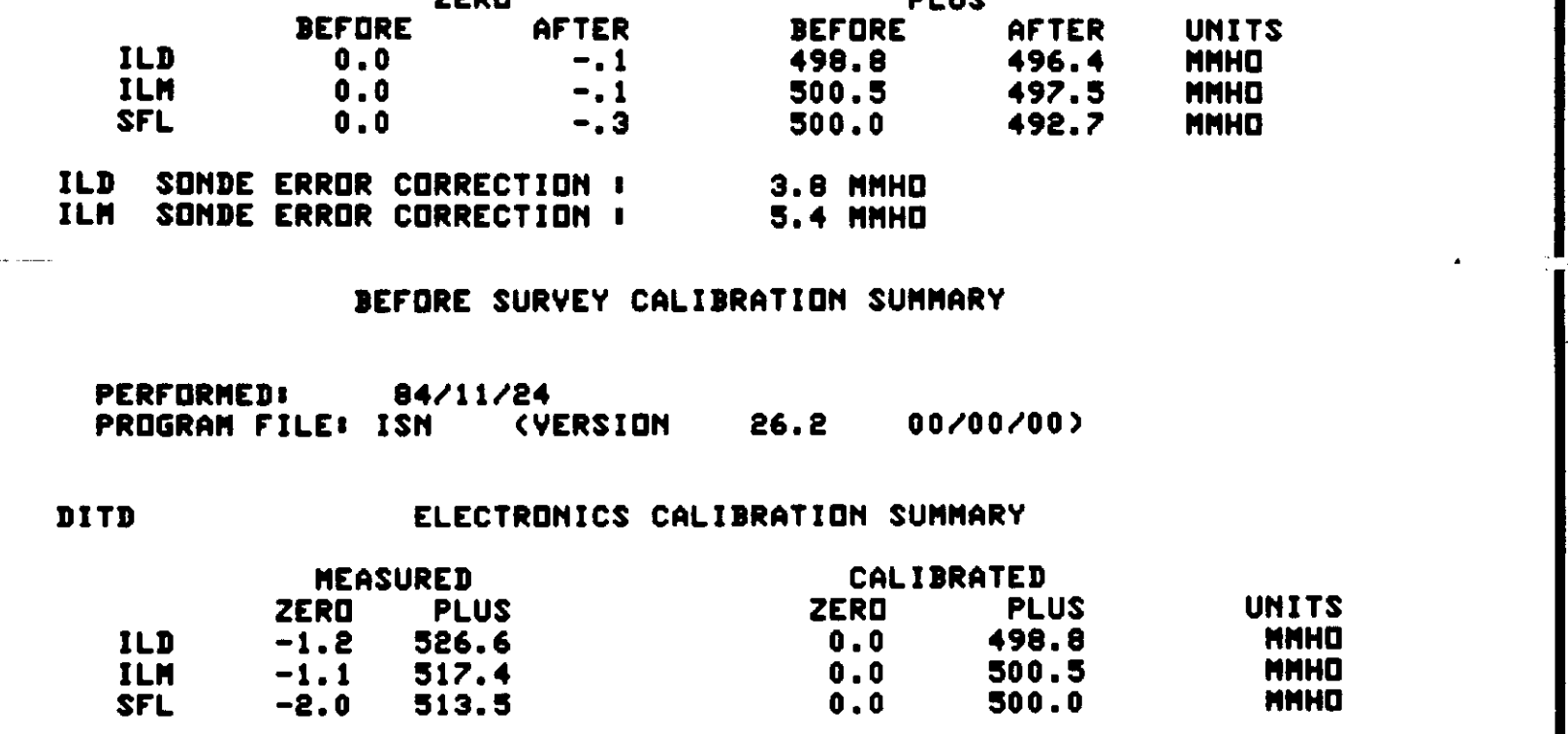


SENSOR MEASURE POINT TO TOOL ZERO

CBL	37.0 FEET	AMPL	37.0 FEET
TT3	33.3 FEET	TT4	32.3 FEET
TY1	36.0 FEET	TY2	37.0 FEET
CALI	56.1 FEET	SRAT	34.5 FEET
SFL	6.4 FEET	ILD	9.4 FEET
SP	2.5 FEET	ILM	5.7 FEET
TENS	2.5 FEET	SPAR	2.5 FEET
NDIS	28.8 FEET		

PARAMETERS

NAME	VALUE	UNIT	NAME	VALUE	UNIT
HSV1 HF1			DHS	16	
DSIN 5		US	DDEL	200	US
CDTS	100.000		DMCD	512	
DTF	189.000	US/F	DTM	55.6000	US/F
SBR	1.00000	DHMM	DSEC	3.80000	MHMD
FPHI	SPHI		MSEC	5.40000	MHMD
FNUM	1.00000		FEXP	2.00000	
RS	7.82500	IN	BHS	OPEN	



SENSOR MEASURE POINT TO TOOL ZERO

CBL	37.0 FEET	AMPL	37.0 FEET
TT3	33.3 FEET	TT4	32.3 FEET
TY1	36.0 FEET	TY2	37.0 FEET
CALI	56.1 FEET	SRAT	34.5 FEET
SFL	6.4 FEET	ILD	9.4 FEET
SP	2.5 FEET	ILM	5.7 FEET
TENS	2.5 FEET	SPAR	2.5 FEET
NDIS	28.8 FEET		

PARAMETERS

NAME	VALUE	UNIT	NAME	VALUE	UNIT
HSV1 HF1			DHS	16	
DSIN 5		US	DDEL	200	US
CDTS	100.000		DMCD	512	
DTF	189.000	US/F	DTM	55.6000	US/F
SBR	1.00000	DHMM	DSEC	3.80000	MHMD
FPHI	SPHI		MSEC	5.40000	MHMD
FNUM	1.00000		FEXP	2.00000	
RS	7.82500	IN	BHS	OPEN	

AFTER SURVEY TOOL CHECK SUMMARY
 PERFORMED: 84/11/24
 PROGRAM FILE: ISM (VERSION 26.2 00/00/00)

DITD	BEFORE	ZERO	AFTER	BEFORE	PLUS	AFTER	UNITS
ILD	0.0		-1	498.8		497.3	MHMD
ILM	0.0		-1	500.5		497.3	MHMD
SFL	0.0		-3	500.0		492.7	MHMD

ILD SONDE ERROR CORRECTION: 3.8 MHMD
 ILM SONDE ERROR CORRECTION: 5.4 MHMD

BEFORE SURVEY CALIBRATION SUMMARY
 PERFORMED: 84/11/24
 PROGRAM FILE: ISM (VERSION 26.2 00/00/00)

DITD	MEASURED	ZERO	PLUS	CALIBRATED	ZERO	PLUS	UNITS
ILD	-5.0		526.6	0.0		498.8	MHMD
ILM	-7.3		517.4	0.0		500.5	MHMD
SFL	-2.0		513.5	0.0		500.0	MHMD

ILD SONDE ERROR CORRECTION: 3.8 MHMD
 ILM SONDE ERROR CORRECTION: 5.4 MHMD

MCD8 CALIPER CALIBRATION SUMMARY
 CALI SMALL LARGE CALIBRATED SMALL LARGE UNITS
 8.0 12.4 8.0 12.0 IN

FILE 6 24-NOV-84 15:03
 SHOP SUMMARY
 PERFORMED: 84/10/31
 PROGRAM FILE: SHOP (VERSION 26.2 83/11/17)

DITD	TEST LOOP	CALIBRATION	TODL CHECK	UNITS
	MEASURED	CALIBRATED	ZERO PLUS	
ILD	-5.0	521.6	0.0	499.0 MHMD
ILM	-7.3	508.9	0.0	500.5 MHMD

ILD SONDE ERROR CORRECTION: 3.8 MHMD
 ILM SONDE ERROR CORRECTION: 5.4 MHMD

(I:1422, I:1149)