

RECEIVED
FEB 24 1988
KENNETH WETZEL et al 20-32
WELL WETZEL 20-32
FIELD HASSEY
COUNTY LINN STATE OREGON

COMPANY AMERICAN OILSAR PETROLEUM
LOCATION 1901 FNU
1360 FNU
SEC 26 TWP 13S RANG 4W
Other Services:

Permanent Downhole Log Measured From KB
Log Measured From KB
Elev: 2066 Elev: K 8 217
Elev: 01 2260

Date 8/21/81
Cable-Logger 2066
Depth-Logger (SFL) 2066
Top Log 2066
Casing-Logger 2066
Casing-Logger 2066
Type Fluid in Hole D2LSTAC
Dens. 1.05 43
Visc. 0.5 13
pH 7.0 13
Source of Sample FORT LAKE
Rim @ Meas. Temp. 041 @ 57 f
Knt @ Meas. Temp. 041 @ 57 f
Knt @ Meas. Temp. 101 @ 60 f
Source: Int. Intc 1A M
Knt @ BHT 084 @ 20 f
Circulation Stopped 01:45
Laguer on Bottom 01:45
Time 01:45
Time Rec. Temp. 01:45
Time Rec. Temp. 01:45
Recorded by M. KANUN
Witnessed by M. KANUN

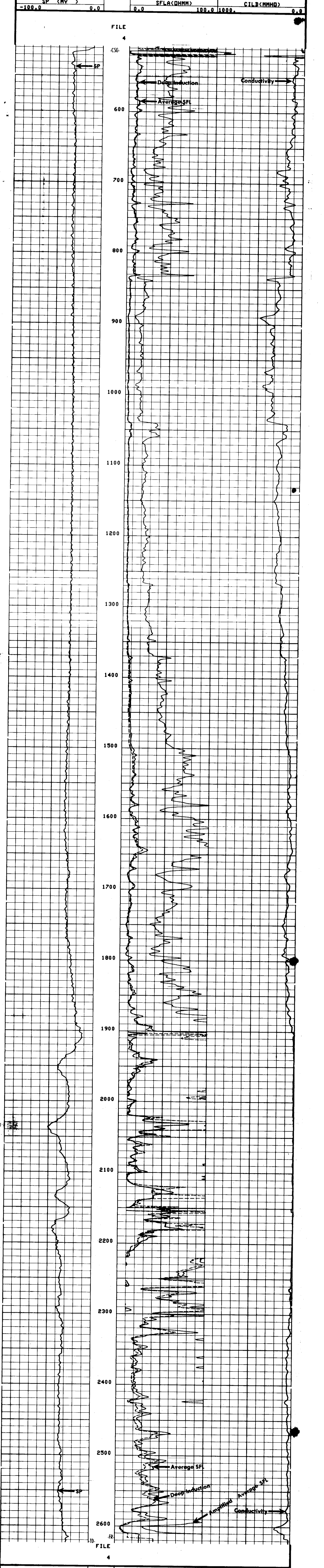
FOLD HERE The well name, location and borehole reference data were furnished by the customer.

Run No.	012	SCALE CHANGES	Type Log	Depth	Scale Up Hole	Scale Down Hole
Service Order No.	213265					
Fluid Level	FULL					
Salinity ppm. cl	1000					
Speed F.P.M.	100					

EQUIPMENT DATA		REMARKS
Panel No.	16A-88-324	
Cartridge No.	DK-DA-217	
Sonde No.	DIS-BA-135	
Mem. Panel No.	CPU-CA-375	
G.R. Panel No.		
G.R. Cart No.		
Tape Recorder - (TR)	MTU-D-2702	
Depth Encoder - (DRE)	CMD	
Pressure Wheel - (CPM)		
Type Centralizers		
Stand Off - Inches	1 1/8	

CALIBRATION DATA	
SBR	1.0
Sonde Error - ILM	0.0
Sonde Error - ILD	2.0
G.R. BKG. - CPS	
G.R. Source - CPS	
S.E. Set In Hole - Depth	
S.E. Corr. - Hole Size	

LOGGING DATA	
SBR	1.0
Sonde Error Log - ILM	0.0
Sonde Error Log - ILD	2.0
G.R. Scale per 100 Div.	
G.R. - T.C. Log	



SENSOR MEASURE POINT TO TENSION REFERENCE POINT			
SFL	3.9 FEET	ILD	6.9 FEET
SP	.0 FEET	ILM	3.3 FEET
TENS	.0 FEET	SPAR	.0 FEET

PARAMETERS					
NAME	VALUE	UNIT	NAME	VALUE	UNIT
DSEC	2.800	MHMD	BS	6.250	IN
MSEC	6.800	MHMD	SBR	1.000	OHMM
DD	0.0		BHS	OPEN	