

Schlumberger

2" BHC SONIC

CSU

CONFIDENTIAL

COMPANY: AMOCO PRODUCTION COMPANY
 WELL: AMOCO-NEVERHAUSER "B-1"
 FIELD: MIDCAT
 COUNTY: DUDMAN
 STATE: OKLAHOMA
 LOCATION: 2899' FROM EAST LINE OF SECTION 13 FROM SOUTH LINE OF SECTION 13 TWP: 29S RGE: 9W

PERMANENT DATUM: GL
 ELEVATION: 1430.0 F
 ELEV. OF PERM DATUM: 1430.0 F
 LOG MEASURED FROM: KB
 DFI: 1454.0 F
 LOG MEASURED FROM: KB
 DFI: 1430.0 F
 DRUG. MEASURED FROM: KB

DATE: 13 JAN 85
 RUN NO: 3
 DEPTH-DRILLER: 11204.0 F
 DEPTH-LOGGER: 11200.0 F
 BTM LOG INTERVAL: 1158.0 F
 TDM LOG INTERVAL: 8500.0 F
 CASING-DRILLER: 5266 F
 CASING-LOGGER: 5268 F
 CASING: 13 3/8"
 BIT SIZE: 12 1/4"
 DEPTH: 11204 F

OTHER SERVICES:
 VSP
 DIL
 FDC/CNL/GR
 CIS

PROGRAM:
 TRCQ
 86.2
 SERVICE
 DRIVER NO:
 438403

RECEIVED - PTLD
 JUN 3 1985
 DEPT. OF GEOLOGY

TYPE FLUID IN HOLE: K-LIG
 DENSITY: 13.0 LB/G
 VISCOSITY: 63.0 S
 PH: 12.2
 FLUID LOSS: 4.0 C3
 SOURCE OF SAMPLE: FLDLINE
 RM: .240 DHMM AT 78.0 DEGF
 RMF: .150 DHMM AT 45.0 DEGF
 RMC: .890 DHMM AT 43.0 DEGF
 SOURCE RMF/RMC: MEASURED/MEASURED
 RM AT BHT: .144 DHMM AT 134. DEGF
 RMF AT BHT: .055 DHMM AT 134. DEGF
 RMC AT BHT: .315 DHMM AT 134. DEGF

TIME CIRC. STOPPED: 14100 1-12
 TIME LOGGER ON BTH.: 22150 1-12

MAX. REC. TEMP: 134.0 DEGF

LOGGING UNIT NO: 8126
 LOGGING UNIT LOC: SACRAMENTO
 RECORDED BY: PILCH
 WITNESSED BY: KEMP

REMARKS:
 21K PPM CHLORIDES.
 DUAL AND SONIC RAN IN COMBINATION.

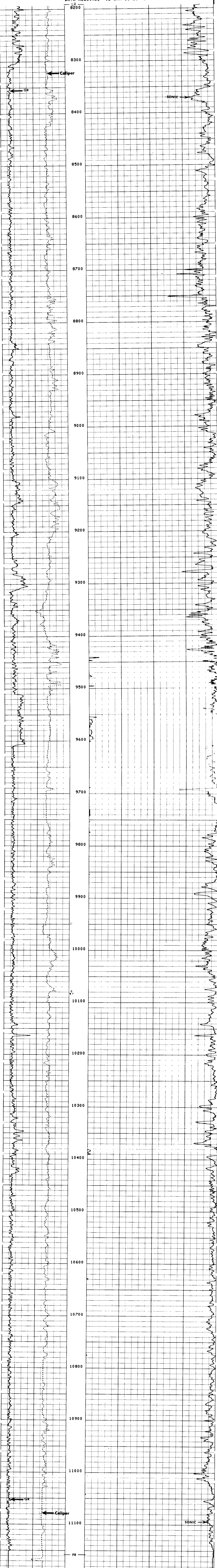
EQUIPMENT NUMBERS-

DIS-EC 1342 DIC-DA 1386 SLS-RC 375 SLC-FA 1303
 MCD-DA 305 SGC-JA 344 IEM-BD 1162 SLM-DA 443
 NML-BC 418

ALL INTERPRETATIONS ARE OPINIONS BASED ON INFERENCES FROM ELECTRICAL OR OTHER MEASUREMENTS AND WE CANNOT, AND DO NOT GUARANTEE THE ACCURACY OR CORRECTNESS OF ANY INTERPRETATIONS, AND WE SHALL NOT, EXCEPT IN THE CASE OF GROSS OR WILLFUL NEGLIGENCE ON OUR PART, BE LIABLE OR RESPONSIBLE FOR ANY LOSS, COSTS, DAMAGES OR EXPENSES INCURRED OR SUSTAINED BY ANYONE RESULTING FROM ANY INTERPRETATION MADE BY ANY OF OUR OFFICERS, AGENTS OR EMPLOYEES. THESE INTERPRETATIONS ARE ALSO SUBJECT TO OUR GENERAL TERMS AND CONDITIONS AS SET OUT IN OUR CURRENT PRICE SCHEDULE.

FILE 4 13-JAN-85 00:58
 DATA ACQUIRED 12-JAN-85 23:42

CALI (IN.) 6.0000 16.000 DT (US/F) 150.00 50.000
 GR (GAPI) 0.0 150.00



FILE 4 13-JAN-85 00:20
 DATA ACQUIRED 12-JAN-85 22:51

CALI (IN.) 6.0000 16.000 DT (US/F) 150.00 50.000
 GR (GAPI) 0.0 150.00

SENSOR MEASURE POINT TO TOOL ZERO

CBL	43.9	FEET	AMPL	43.9	FEET
TT3	40.1	FEET	DDEL	200	US
TT1	42.9	FEET	BUCO	512	US
GR	64.0	FEET	DTM	56.0000	US/F
ILD	9.4	FEET	SRAT	41.4	FEET
ILM	5.7	FEET	CAL1	31.8	FEET
SPAR	2.5	FEET	SFL	6.4	FEET
NDIS	35.6	FEET	SP	2.5	FEET
			TENS	2.5	FEET

PARAMETERS

NAME	VALUE	UNIT	NAME	VALUE	UNIT
HVSI	MF1		DHS	16	
DSIN	5	US	DDEL	200	US
CDTS	100.0000	US	BUCO	512	US
DTF	189.0000	US/F	DTM	56.0000	US/F
SBR	1.000000	MM/HD	SRAT	41.4	FEET
FPHI	SPHI		CAL1	31.8	FEET
BS	12.2500	IN	SFL	6.4	FEET
PP	NDRM		SP	2.5	FEET
			BHS	OPEN	
			DD	0.0	F

TAPE NOT MADE