

SONIC 2"



CONFIDENTIAL

COMPANY: AMOCO PRODUCTION CO.  
 WELL: AMOCO-LEVERHUISER 3-1  
 FIELD: HILDCAT  
 COUNTY: DOUGLAS  
 STATE: OREGON  
 LOCATION: 2699' FROM EAST LINE AND  
 13' FROM SOUTH LINE  
 SEC: 13 TWP: 25S RGE: 9W

FORMATION DATA:  
 LOG MEASURED FROM: 10' TO 1493.0'  
 DRG. MEASURED FROM: ABOVE PERM. DATUM  
 ELEVATIONS:  
 MSL 1493.0'  
 DATUM 1493.0'  
 DATUM NO: 432171

DEPTH-DRILLER: 57451.0  
 DEPTH-LOGGER: 57460.0  
 TD LOG INTERVAL: 17000.0  
 CASING-DRILLER: 10006  
 CASING-LOGGER: 20004  
 BIT SIZE: 17 1/2"  
 BIT DEPTH: 57451.0

RECEIVED - FTLD  
 JUN 0 1985

OTHER SERVICES:  
 DIL  
 MDC/CML/GR  
 CST

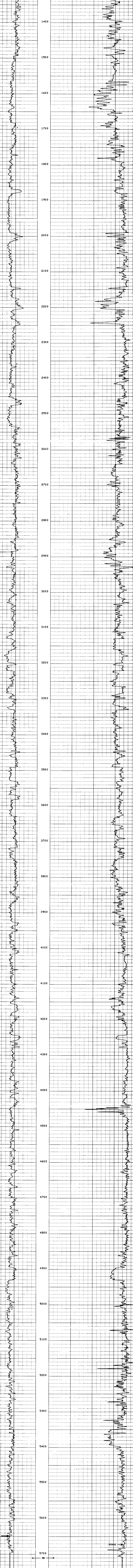
PROGRAM  
 TAPE NO:  
 SERIAL:  
 DDEP NO:  
 432171

TYPE FLUID IN HOLE: DESCO/BAR  
 DENSITY: 9.0 LB/G  
 VISCOSITY: 43.0 S  
 PH: 9.8  
 FLUID LOSS: 13.2 C3  
 SOURCE OF SAMPLE: FLOWLINE  
 RMI: 1.630 DHMM AT 61.0 DEGF  
 RMF: 1.520 DHMM AT 62.0 DEGF  
 RMC: 1.960 DHMM AT 62.0 DEGF  
 SOURCE RMF/RMC: MEAS/MEAS  
 RM AT BHT: 0.710 DHMM AT 149. DEGF  
 RMF AT BHT: 0.670 DHMM AT 149. DEGF  
 RMC AT BHT: 0.866 DHMM AT 149. DEGF  
 TIME CIRC. STOPPED: 0200 10-21  
 TIME LOGGER ON BTH: 0850 10-21  
 MAX. REC. TEMP: 149.0 DEGF  
 LOGGING UNIT NO: 8178  
 LOGGING UNIT LOC: SACRAMENTO  
 RECORDED BY: SUTER  
 WITNESSED BY: FRANKLIN/GRAY

REMARKS:  
 CENTRALIZATION: CMEZ AND RUBBER FINS  
 SALINITY: 4600 PPM CL-

EQUIPMENT NUMBERS-  
 DIS 691 DIC 1149 IEM 686 SLS 346  
 SLC 1589 SLM 983 SGC 2692 NLM 699

ALL INTERPRETATIONS ARE OPINIONS BASED ON INFERENCES FROM ELECTRICAL OR OTHER MEASUREMENTS AND WE CANNOT, AND DO NOT GUARANTEE THE ACCURACY OR CORRECTNESS OF ANY INTERPRETATIONS, AND WE SHALL NOT, EXCEPT IN THE CASE OF GROSS OR WILLFUL NEGLIGENCE ON OUR PART, BE LIABLE OR RESPONSIBLE FOR ANY LOSS, COSTS, DAMAGES OR EXPENSES INCURRED OR SUSTAINED BY ANYONE RESULTING FROM ANY INTERPRETATION MADE BY ANY OF OUR OFFICERS, AGENTS OR EMPLOYEES. THESE INTERPRETATIONS ARE ALSO SUBJECT TO OUR GENERAL TERMS AND CONDITIONS AS SET OUT IN OUR CURRENT PRICE SCHEDULE.



SENSOR MEASURE POINT TO TOOL ZERO

|      |      |      |      |      |      |
|------|------|------|------|------|------|
| CBL  | 37.0 | FEET | AMPL | 37.0 | FEET |
| TT3  | 33.3 | FEET | TT4  | 32.3 | FEET |
| DSIN | 5    | FEET | DT2  | 37.0 | FEET |
| GR   | 57.2 | FEET | SRAT | 34.5 | FEET |
| SF   | 6.4  | FEET | ILD  | 9.4  | FEET |
| SP   | 2.5  | FEET | ILM  | 5.7  | FEET |
| TEP  | 2.5  | FEET | SPAR | 2.5  | FEET |
| NDIS | 28.8 | FEET |      |      |      |

PARAMETERS

| NAME | VALUE   | UNIT | NAME | VALUE   | UNIT |
|------|---------|------|------|---------|------|
| HSV1 | HF1     |      | DWS  | 16      |      |
| DSIN | 5       | US   | DDCL | 200     | US   |
| CST  | 100.000 | US   | DUCD | 512     |      |
| DTF  | 189.000 | US/F | DTM  | 55.6000 | US/F |
| SBR  | 1.00000 | DHMM | DSEC | 6.10000 | MMHO |
| FPHI | SPHI    |      | MSEC | 6.90000 |      |
| FNUM | 1.00000 |      | FEAP | 3.00000 |      |
| FENS | 17.5000 | IN   | BAS  | OPEN    |      |
| SPDR | 0.0     |      | DD   | 0.0     | F    |
| PP   | DDRM    |      |      |         |      |