

LONG SPACED  
2" SONIC

CONFIDENTIAL

COMPANY: ANDCO PRODUCTION COMPANY  
WELL: ANDCO-EVERHAUSER "B-1"  
FIELD: HILDCAT  
COUNTY: DOUGLAS  
STATE: OREGON  
NATION: U.S.A.  
LOCATION: 8839' FROM EAST LINE  
SECTION: 18 31' FROM SOUTH LINE  
RGE: 9M

PERMANENT DATUM: GL  
ELEV. OF PERM. DATUM: 1430.0 F  
LOG MEASURED FROM: KB  
DMLG. MEASURED FROM: KB  
ELEVATIONS: KBI 1435.0 F  
DPI 1434.0 F  
GL 1430.0 F

DEPT.-DRILLER: 8634.0 F  
DEPT.-LOGGER: 8639.0 F  
BTH. LOG INTERVAL: 8608.0 F  
TOP LOG INTERVAL: 3768.0 F  
COSTING-DRILLER: 3768 F  
COSTING-LOGGER: 3668 F  
COSTING: 13 3/8"  
BIT SIZE: 12 1/4"  
BIT DEPTH: 8634 F

RECEIVED - PTLD  
JUN 3 1985  
DEPT. OF GEOLOGY

RECEIVED - PTLD  
JUN 3 1985  
DEPT. OF GEOLOGY

PROGRAM  
TAPE NO: 26.2  
SERVICE: ORDER NO: 438238

OTHER SERVICES:  
DIL-1SS-GR  
FDC-CNL-GR  
HDT  
MST  
CST  
TDT

TYPE FLUID IN HOLE: K-LIG  
DENSITY: 11.7 LB/G  
VISCOSITY: 51.0 S  
PH: 11.6  
FLUID LOSS: 11.6 C3  
SOURCE OF SAMPLE: FLOWLINE  
RM: 2.540 DHMM AT 57.0 DEGF  
RMF: 2.380 DHMM AT 57.0 DEGF  
RMC: 2.870 DHMM AT 57.0 DEGF  
SOURCE RMF/RMC: MEASURED/MEASURED  
RM AT BHT: 1.022 DHMM AT 152. DEGF  
RMF AT BHT: .957 DHMM AT 152. DEGF  
RMC AT BHT: 1.155 DHMM AT 152. DEGF

TIME CIRC. STOPPED: 10:00 12-9  
TIME LOGGER ON BTH.: 10:30 12-9  
MAX. REC. TEMP: 152.0 DEGF  
LOGGING UNIT NO: 8128  
LOGGING UNIT LOC: SACRAMENTO  
RECORDED BY: PILCH  
WITNESSED BY: KEMP

REMARKS:  
13,000 PPM CHLORIDES

EQUIPMENT NUMBERS-  
DIS-EC 691 DIC-DA 658 MCD-D 1237 SLS-SC 235  
SLC-FA 1468 SLM-DA 428 NLM-BC 456 IEN-BD 304

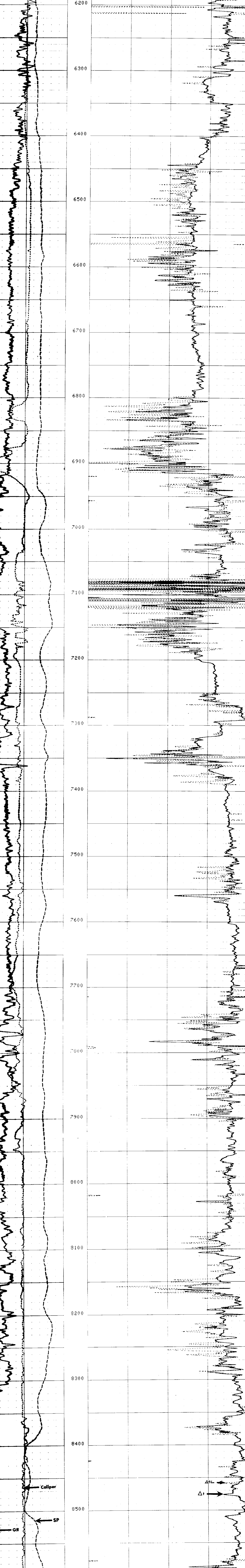
ALL INTERPRETATIONS ARE OPINIONS BASED ON INFERENCES FROM ELECTRICAL OR OTHER MEASUREMENTS AND WE CANNOT, AND DO NOT GUARANTEE THE ACCURACY OR CORRECTNESS OF ANY INTERPRETATIONS, AND WE SHALL NOT, EXCEPT IN THE CASE OF GROSS OR WILLFUL NEGLIGENCE ON OUR PART, BE LIABLE OR RESPONSIBLE FOR ANY LOSS, COSTS, DAMAGES OR EXPENSES INCURRED OR SUSTAINED BY ANYONE RESULTING FROM ANY INTERPRETATION MADE BY ANY OF OUR OFFICERS, AGENTS OR EMPLOYEES. THESE INTERPRETATIONS ARE ALSO SUBJECT TO OUR GENERAL TERMS AND CONDITIONS AS SET OUT IN OUR CURRENT PRICE SCHEDULE.

FILE 101 10-DEC-84 00:50  
DATA ACQUIRED 00- -00 00:00

CAL(SUM) 0.0000 18.000  
GR (GAPI) 0.0 150.00  
SP (MV) -100.0 0.0

DTL (US/F) 150.00 50.000  
DT (US/F) 150.00 50.000

FILE 3 09-DEC-84 20:20  
DATA ACQUIRED 09-DEC-84 19:47



FILE 3 09-DEC-84 20:15  
DATA ACQUIRED 09-DEC-84 18:32

CAL(SUM) 0.0000 18.000  
GR (GAPI) 0.0 150.00  
SP (MV) -100.0 0.0

DTL (US/F) 150.00 50.000  
DT (US/F) 150.00 50.000

SENSOR MEASURE POINT TO TOOL ZERO  
CBL 46.9 FEET  
TT3 46.9 FEET  
TT1 47.9 FEET  
GR 68.0 FEET  
ILD 9.4 FEET  
ILM 5.7 FEET  
SPAR 2.5 FEET  
MOIS 35.6 FEET  
AMPL 46.9 FEET  
TT4 45.9 FEET  
TT2 46.9 FEET  
SRAT 51.9 FEET  
CALI 31.8 FEET  
SFL 6.4 FEET  
SP 2.5 FEET  
TENS 2.5 FEET

PARAMETERS  
NAME VALUE UNIT NAME VALUE UNIT  
MSV1 WF1  
DSIN DT US  
TT3 47.9  
CDTS 100.000  
DTF 189.000 US/F  
SBR 1.00000 DHMM  
FPHI SPHI  
BS 12.2500 IN  
PP NORM  
DHS 16  
DDEL 200 US  
DHCO 512  
SP3 DT  
DTM 56.00000 US/F  
DSEC 6.20000 MMHD  
MSEC 7.20000 MMHD  
BHS OPEN  
DO 0.0 F

TAPE NOT MADE