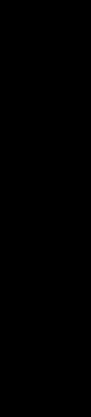


SONIC LOG WITH GR 2"



COMPANY: AMOCO PRODUCTION CO.  
WELL: AMOCO-HEVERHAUSER BP-1

FIELD: HILDCAT  
COUNTY: COOS  
STATE: OREGON

LOCATION: 1623' FNL & 1906' FEL  
SEC: 10 TWP: 28S

PERMANENT DATUM: GL  
ELEV. OF PERM. DATUM: 880.0 F  
LOG MEASURED FROM PERM. DATUM: DL1 880.0 F

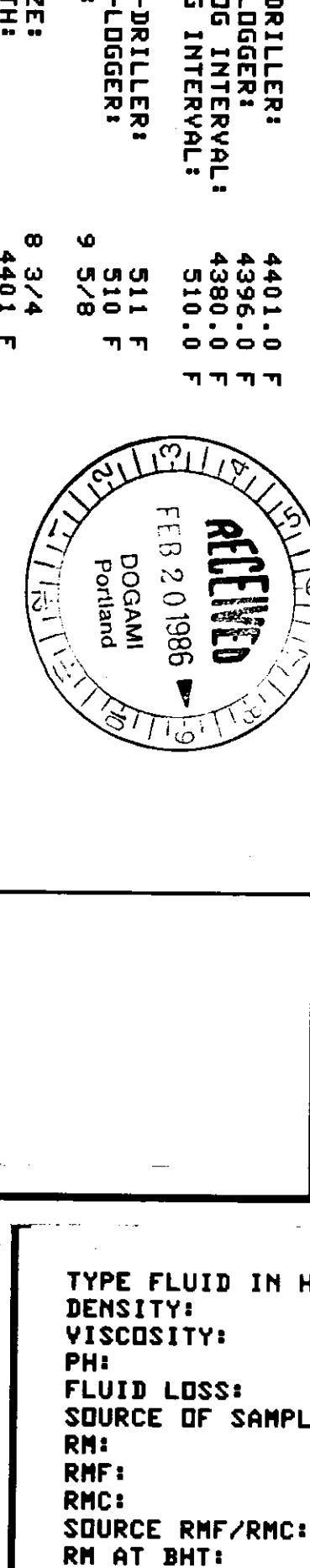
DATE: 4 SEP 85  
RUN NO: 1

DEPTH-DRILLER: 4401.0 F  
DEPTH-LOGGERS: 4386.0 F  
TOP LOG INTERVAL: 510.0 F

CASING-DRILLER: 511 F  
CASING-LOGGERS: 510 F  
CASING: DOGAMI  
BIT SIZE: 8 3/4  
4401 F

OTHER SERVICES-  
DIL/MSFL  
SHOT  
HST  
CST

PROGRAM  
TAPE NO:  
SERVICED  
DATE:  
DRIVER:  
REVISIONS



TYPE FLUID IN HOLE:  
DENSITY: 10.8 LB/G  
VISCOSITY: 77.0 S  
PH: 9.0  
FLUID LOSS: 1.2 CC  
SOURCE OF SAMPLE:  
RMF: 2.270 DHMM AT 70.0 DEGF  
RMC: 2.390 DHMM AT 63.0 DEGF  
SOURCE RMF/RMC:  
RM AT BHT: 2.410 DHMM AT 63.0 DEGF  
RMC AT BHT: 1.468 DHMM AT 112. DEGF  
RMC AT BHT: 1.405 DHMM AT 112. DEGF  
RMC AT BHT: 1.417 DHMM AT 112. DEGF

MEAS. /MEAS.  
1.468 DHMM AT 112. DEGF  
1.405 DHMM AT 112. DEGF  
1.417 DHMM AT 112. DEGF

TIME CIRC. STOPPED: 1700 3/9  
TIME LOGGING: 1807 4/9  
MAX. REC. TEMP: 112.0 DEGF  
LOGGING UNIT NO: 8057  
LOGGING UNIT LOC: SACRAMENTO  
RECORDED BY: ANDERSEN  
WITNESSED BY: ENGLISH

REMARKS:  
CMEZ USED

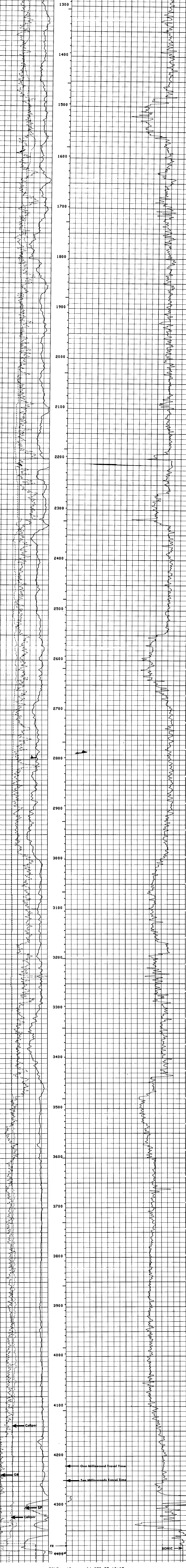
EQUIPMENT NUMBERS-  
NLM 207 SLM 443 SLS 252 SLC 1321  
MCD 1237

ALL INTERPRETATIONS ARE OPINIONS BASED ON INFERENCES FROM ELECTRICAL OR OTHER MEASUREMENTS AND WE CANNOT, AND DO NOT GUARANTEE THE ACCURACY OR CORRECTNESS OF ANY INTERPRETATIONS, AND WE SHALL NOT, EXCEPT IN THE CASE OF GROSS OR WILLFUL NEGLIGENCE ON OUR PART, BE LIABLE OR RESPONSIBLE FOR ANY LOSS, DAMAGES OR EXPENSES INCURRED OR SUSTAINED BY ANYONE RESULTING FROM ANY INTERPRETATION MADE BY ANY OF OUR OFFICERS, AGENTS OR EMPLOYEES. THESE INTERPRETATIONS ARE ALSO SUBJECT TO OUR GENERAL TERMS AND CONDITIONS AS SET OUT IN OUR CURRENT PRICE SCHEDULE.

FILE 21 04-SEP-85 13:26  
DATA ACQUIRED 00-00 00:00

CALI (IN) 6.0000 16.0000  
GR (GAPI) 0.0 150.00  
SP (MV) -100.0 0.0

DT (US/F) 150.00 50.000



FILE 19 04-SEP-85 12:05

CALI (IN) 6.0000 16.0000  
GR (GAPI) 0.0 150.00  
SP (MV) -100.0 0.0

DT (US/F) 150.00 50.000

SENSOR MEASURE POINT TO TOOL ZERO					
CBL	15.0	FEET	AMPL	15.0	FEET
TT3	14.3	FEET	TT4	10.3	FEET
TT1	14.0	FEET	TT2	15.0	FEET
GR	35.2	FEET	SRLT	12.5	FEET
SP	-1.5	FEET	CALI	3.0	FEET
TENS	-1.5	FEET	SPAR	-1.5	FEET
MOIS	6.8	FEET			

PARAMETERS					
NAME	VALUE	UNIT	NAME	VALUE	UNIT
MSV1 HF1			DHS	16	
DSIM 5		US	DDEL	200	US
CDTS	100.000		DHCO	512	
DTF	189.000	US/F	DHMC	56.0000	US/F
BHS	OPEN		FPHI	SPHI	
BS	8.75000	IN			