

BUENA VISTA WELL LOG

IN SW⁴ OF NW⁴ SEC. 24 T. 9. S. R. 4. W. Ore.
 CORRELATED WITH MEASURED SECTIONS
 Drilled by K.D. Rodebaugh. (reported Under-cover, for B&T)

Spudded Oct. 6 1935 Abandoned July 4th 1936
 Drilled on farm of W^m Wiedehker
 Scale 1" = 200' By Chas. S. B. Henry

Casing record

Graphic Log

SPRING HILL (SECTION) (Tye) 1931

Elev 160± Above Mean Sea Level

15" Plugged at top.
 15" Shoe landed at 104' but pulled back to 92' when 12" pipe was run, allowing fresh water to flood gas sands at 500 to 645 feet.

Filled with heavy MUD.

12" Pipe shot off at 400 feet, plugged and cemented with 20 sacks.

Shoe 12" 785' 7"

8" casing shot off at 800 feet, hole plugged and cemented with 20 sacks.

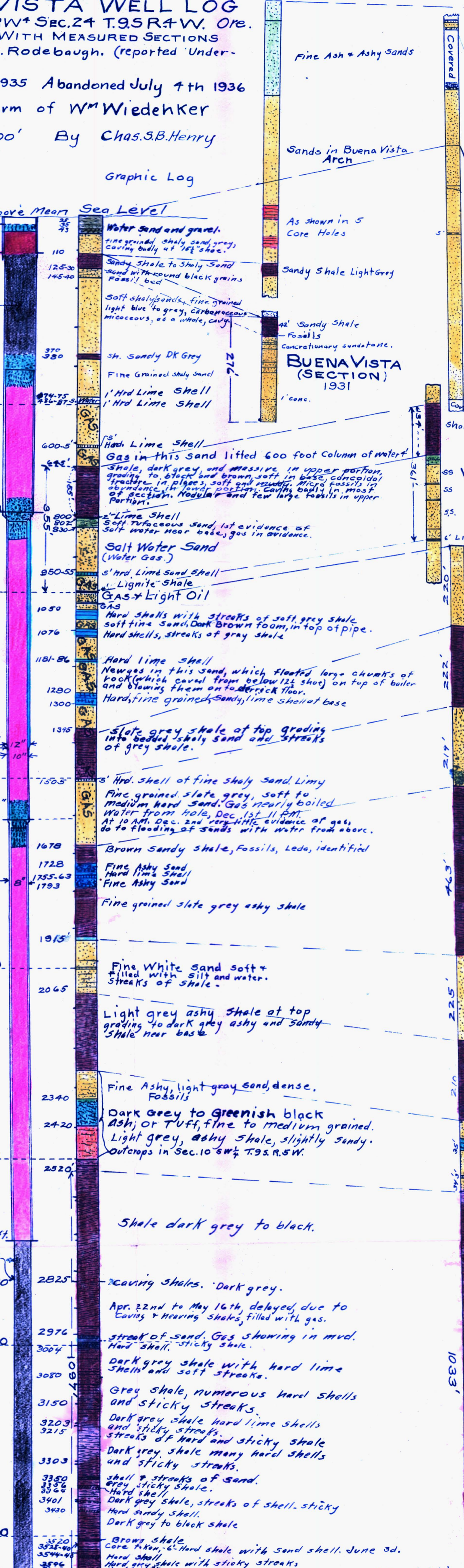
12" hole drilled to here 1342' 12" 7 10" 6

8" shoe set at 1601' 8" in middle of gas sand.
 7" casing shot off at 1610 feet, plugged and cemented with 20 sacks.

At no time during the drilling of this well was there any attempt made to test a single zone for production, in spite of the fact that large volumes of gas was in evidence. The horizons of gas sand in evidence at the number of the log they are as follows: 500-645, 1050-1076, 1151-86, 1280-1300, 1395, 1500-1505, 1678, 1728, 1755-63, 1793, 2000, 2065, 2340, 24-20, 2500, 2520, 2825, 2976, 3004, 3080, 3150, 3203, 3215, 3303, 3350, 3386, 3399, 3401, 3430, 3520, 3525-60, 3544-48, 3596, 3602, 3617.

Shoe of 7" 2711ft.
 Standard Tools to here.
 Rotary to bottom.

3617 bottom
 Hole bottomed June 12 started to abandon June 20th at 1 P.M. Completed July 4th 1936.



WILSON LAKE (SECTION) (Tye) 1931

LEWISBURG HILLS (SECTION) (Tejon) 1931

Drillers Daily report from 3602' June 8 to 12

AM.	8	3602	Ran in to bottom of casing with Hughes Rock bit.
PM.	8	3602:05	Shell, pulled out and started in with fishtail bit.
AM.	9	3605	Pulled out and ran in with Hughes Rock bit.
PM.	9	3605:05	Hard shell.
AM.	10	3609:16	Hard shell.
PM.	10	3616:17	Streaks of shale & shell. Pulled rock bit and ran fishtail.
AM.	11	3617	Hard shell, pulled fishtail & ran rock bit.
PM.	11	3617	Changed lines.
AM.	12	3617	Hard. Pulled rock bit and it showed iron.
PM.	12	3617	Shut down for orders. (Rock is basal?)

NOTE: On the 10th P.M. when they ran in with fishtail bit the tools stopped a few feet from bottom, they ran until the 11th A.M. and when they came out of hole, both wings were broken off of bit, then they ran rock bit on 12th A.M. and when they came out the cones were lost off of bit, and they shut down for further orders from New York. Chas. S. B. Henry.