

COMPANY: REICHHOLD ENERGY CORPORATION

WELL: WILSON #11-5

FIELD: MIST-NEHALEM BASIN

COUNTY: COLUMBIA

STATE: OREGON

LOCATION: 229.75' N & 690.09' S

SEC: 3E

PERMITS: 171 7M

REG: 5M

PERMANENT DATUM: GL

ELEV. OF PERM. DATUM: 598.5'

LOG MEASURED FROM: KA

11.4' ABOVE PERM. DATUM

LOG MEASURED FROM: KA

ELEVATIONS: DFL 609.9'

11.4' ABOVE PERM. DATUM

GL: 598.5'

DATE: 13 OCT 1983

RAW NO: 1

DEPTH-DRILLER: 2827.0'

DEPTH-LOGGER: 2818.0'

BIT LOG INTERVAL: 275.0'

LOG INTERVAL: 486.0'

CASING-DRILLER: 491'

CASING-LOGGER: 486'

CASING: 8.625

BIT SIZE: 7.875

BIT DEPTH: 2827'

OTHER SERVICES-
DIL
HDI

PROGRAM
TOP NO:
84
SERV: 2
SERVICE
DDDF NO:
388936

TYPE FLUID IN HOLE: LIGNOSULFONATE
DENSITY: 10.2 LB/G
VISCOSITY: 44.0 cP
PH: 9.8
FLUID LOSS: 6.6 CC
SOURCE OF SAMPLE: CIRC.
RHF: 1.510 DHMM AT 64.0 DEGF
RHF: 2.400 DHMM AT 46.0 DEGF
RHF: 2.450 DHMM AT 31.0 DEGF
SOURCE RHF/RMC: MEAS. /MEAS.
RM AT BHT: 1.072 DHMM AT 93.0 DEGF
RHF AT BHT: 1.272 DHMM AT 93.0 DEGF
RMC AT BHT: 1.421 DHMM AT 93.0 DEGF

TIME CIRC. STOPPED: 0500
TIME LOGGER ON BTH: 0815

MAX. REC. TEMP: 93.0 DEGF

LOGGING UNIT NO: 8128
LOGGING UNIT LOC: SACRAMENTO
RECORDED BY: AMBERSEN
WITNESSED BY: ALGER

REMARKS:

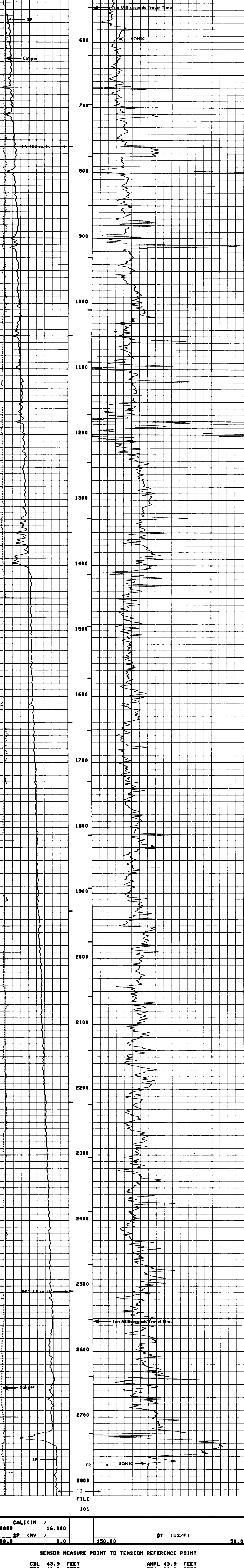
EQUIPMENT NUMBERS-
IEN 304 IC 1386 IS 1425

ALL INTERPRETATIONS ARE OPINIONS BASED ON INFERENCES FROM ELECTRICAL OR OTHER MEASUREMENTS AND WE CANNOT, AND DO NOT GUARANTEE THE ACCURACY OR CORRECTNESS OF ANY INTERPRETATIONS, AND WE SHALL NOT, EXCEPT IN THE CASE OF GROSS OR WILLFUL NEGLIGENCE ON OUR PART, BE LIABLE OR RESPONSIBLE FOR ANY LOSS, COSTS, DAMAGES OR EXPENSES INCURRED OR SUSTAINED BY ANYONE EMPLOYEES. THESE INTERPRETATIONS ARE ALSO SUBJECT TO OUR GENERAL TERMS AND CONDITIONS AS SET OUT IN OUR CURRENT PRICE SCHEDULE.

FILE 102

6.0000 CAL (IN) 16.000
SP (MV) 0.0
-100.0 0.0
150.00 BT (US/F) 50.000

FILE 101



FILE 101

6.0000 CAL (IN) 16.000
SP (MV) 0.0
-100.0 0.0
150.00 BT (US/F) 50.000

SENSOR MEASURE POINT TO TENSION REFERENCE POINT

CBL	43.9	FEET	AMPL	43.9	FEET
TT3	40.2	FEET	TT4	39.2	FEET
TT1	42.9	FEET	TT2	43.9	FEET
CAL1	31.8	FEET	SRAT	41.4	FEET
SFL	6.4	FEET	ILD	9.4	FEET
SP	2.5	FEET	ILM	5.8	FEET
MOIS	.0	FEET	SPAR	2.5	FEET
NDIS	35.7	FEET			

PARAMETERS

NAME	VALUE	UNIT	NAME	VALUE	UNIT
DBEL	200	US	BS	7.87500	IN
DMCD	512	US	DSIM	5	US
DSE	56.0000	US/F	CBTS	140.000	
DSEC	3.90000	MWD	DTF	189.000	US/F
MSEC	6.20000	MWD	SBR	1.00000	DHMM
BHS	OPEN		FPHI	SPHI	
PP	NORM		DD	0.0	F

COMPANY: REICHHOLD ENERGY CORP. SCHL. FR: 2818.0
WELL: WILSON #11-5 SCHL. TD: 2818.0
FIELD: MIST-NEHALEM BASIN DRLR. TD: 2827.0
COUNTY: COLUMBIA STATE: OREGON Elev: KB: 609.9
DF: N/A
GL: 598.5