

COMPANY: REICHHOLD ENERGY CORPORATION  
 WELL: WILSON #11-5  
 FIELD: MIST-NEHALEM BASIN  
 COUNTY: COLUMBIA  
 STATE: OREGON  
 LOCATION: 929.75' N & 690.89' S  
 SEC: 32  
 T1P: 1/4 CORNER DF  
 T2P: 7N  
 RGE: 5M  
 PERMANENT DATUM: GL  
 ELEV. OF PERM. DATUM: 598.5'  
 LEG. MEASURED FROM: KB DATUM  
 DRLG. MEASURED FROM: KB  
 DATE: 13 OCT 1983  
 RUN NO: 1  
 DEPTH-DRILLER: 2827.0'  
 DEPTH-LOGGER: 2818.0'  
 BTM. LOG INTERVAL: 2812.0'  
 TOP LOG INTERVAL: 486.0'  
 CASING-DRILLER: 491'  
 CASING-LOGGER: 486'  
 CASING: 8.625  
 BIT SIZE: 7.875  
 DEPTH: 2827'

OTHER SERVICES-  
BHC  
HDT

TYPE FLUID IN HOLE: LIGNOSULFONATE  
 DENSITY: 10.2 LB/G  
 VISCOSITY: 44.0 S  
 PHI: 9.8  
 FLUID LOSS: 6.6 C3  
 SOURCE OF SAMPLE: CIRC.  
 RM: 1.510 OHMM AT 64.0 DEGF  
 RMF: 2.400 OHMM AT 46.0 DEGF  
 RMC: 2.450 OHMM AT 51.0 DEGF  
 SOURCE RMF/RMC: MEAS. / MEAS.  
 RM AT BHT: 1.072 OHMM AT 93.0 DEGF  
 RMF AT BHT: 1.272 OHMM AT 93.0 DEGF  
 RMC AT BHT: 1.421 OHMM AT 93.0 DEGF

TIME CIRC. STOPPED: 0500  
 TIME LOGGER STOPPED: 0500

MAX. REC. TEMP: 93.0 DEGF  
 LOGGING UNIT NO: 8128  
 LOGGING UNIT LOC: SACRAMENTO  
 RECORDED BY: ANDERSON  
 WITNESSED BY: ALGER

REMARKS:

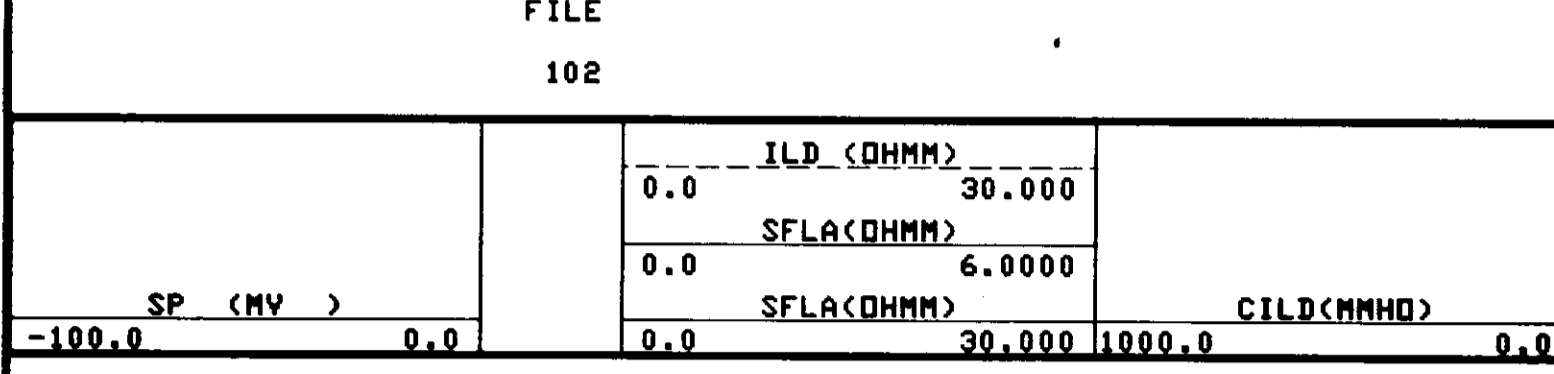
EQUIPMENT NUMBERS-

IEM 304 IC 1386 IS 1425

ALL INTERPRETATIONS ARE OPINIONS BASED ON INFERENCES FROM ELECTRICAL OR OTHER MEASUREMENTS AND WE CANNOT, AND DO NOT GUARANTEE THE ACCURACY OR CORRECTNESS OF ANY INTERPRETATIONS, AND WE SHALL NOT, EXCEPT IN THE CASE OF GROSS OR WILLFUL NEGLIGENCE ON OUR PART, BE LIABLE OR RESPONSIBLE FOR ANY LOSS, COSTS, DAMAGES OR EXPENSES INCURRED OR SUSTAINED BY ANYONE RESULTING FROM ANY INTERPRETATION MADE BY ANY OF OUR OFFICERS, AGENTS OR EMPLOYEES. THESE INTERPRETATIONS ARE ALSO SUBJECT TO OUR GENERAL TERMS AND CONDITIONS AS SET OUT IN OUR CURRENT PRICE SCHEDULE.

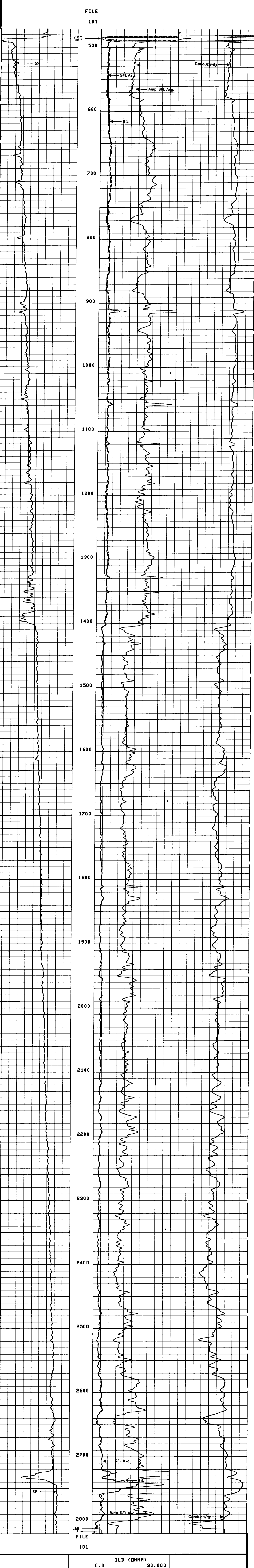
FILE

102



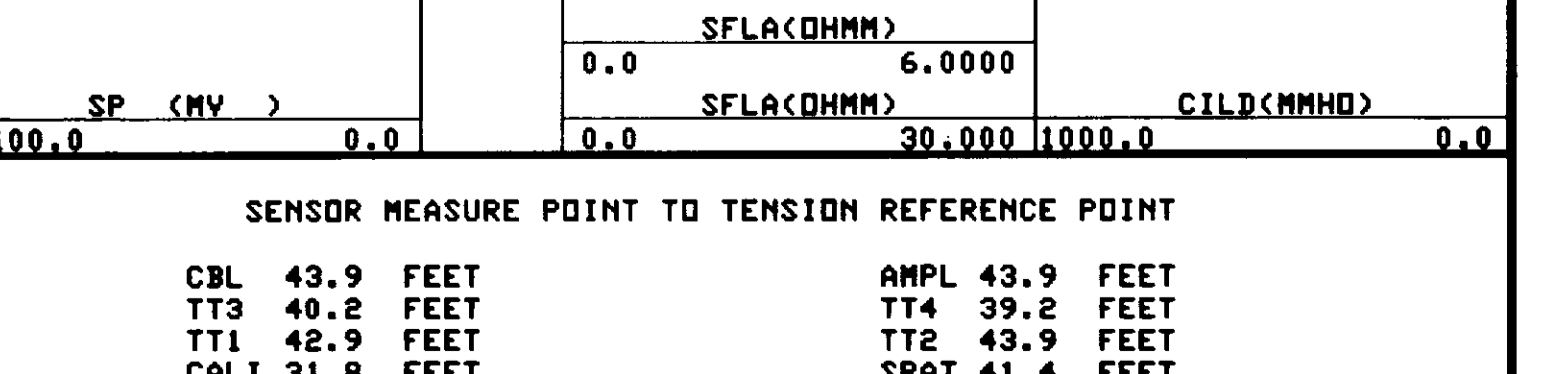
FILE

101



FILE

101



SENSOR MEASURE POINT TO TENSION REFERENCE POINT

CBL	43.9	FEET	AMPL	43.9	FEET
TT3	40.2	FEET	TT4	39.2	FEET
TT1	42.9	FEET	TT2	43.9	FEET
CALI	31.8	FEET	SRAT	41.4	FEET
SFL	5.4	FEET	ILD	9.4	FEET
SP	0.5	FEET	ILM	5.8	FEET
TENS	0	FEET	SPAR	2.5	FEET
NDIS	35.7	FEET			

PARAMETERS

NAME	VALUE	UNIT	NAME	VALUE	UNIT
DDEL	200	US	BS	7.87500	IN
DHCO	512		DSIN	5	US
DTC	56.0000	US/F	CDTS	140.000	US
DSEC	3.90000	MMHD	DTF	189.000	US/F
MSEC	6.20000	MMHD	ILD	1.00000	OHMM
BHS	OPEN		FPHI	SPHI	
PP	NORM		DD	0.0	F

COMPANY: REICHHOLD ENERGY CORPORATION

WELL: WILSON #11-5

FIELD: MIST-NEHALEM BASIN

COUNTY: COLUMBIA STATE: OREGON

SCHL. FR: 2812.0

SCHL. TD: 2818.0

DRLR. TD: 2827.0

Elev: 609.9  
KB: N/A  
GL: 598.5