

COUNTY COLUMBIA  
 FIELD MIST  
 LOCATION 1388'E AND 274'S  
 WELL FISHAWK/WILSON 11A-5-65 RD#1  
 COMPANY NAHAMA AND WEAGANT ENERGY CO.  
 FIELD MIST  
 COUNTY COLUMBIA  
 STATE OREGON  
 LOCATION 1388'E AND 274'S  
 FROM THE NW CORNER OF  
 T14 R14C 01  
 T14N R14W YOU  
 OTHER SERVICE:  
 DATE 25-OCT-1992  
 TIME 11:01  
 DRILLING MEASURED FROM 81  
 PERMANENT DATUM 1101  
 ELEV. 604.0 F  
 ABOVE PERM. DATUM  
 D.F. 604.0 F  
 LOG MEASURED FROM 81  
 DATE 25-OCT-1992  
 TIME 11:01  
 DRILLING MEASURED FROM 81  
 PERMANENT DATUM 1101  
 ELEV. 604.0 F  
 ABOVE PERM. DATUM  
 D.F. 604.0 F  
 LOG MEASURED FROM 81

The well name, location and borehole reference data were furnished by the customer.

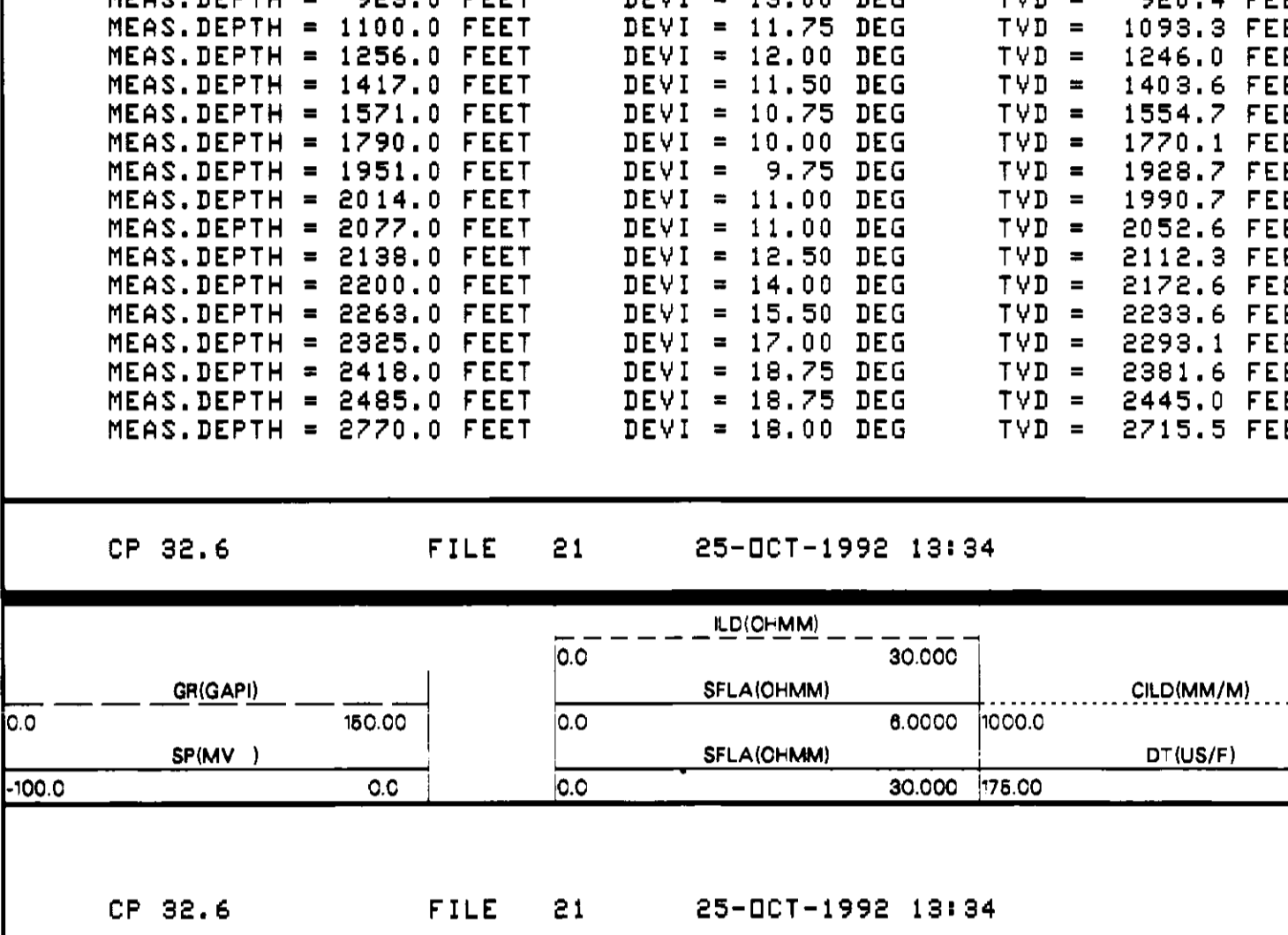
All interpretations are opinions based on inference from electrical or other measurements and we cannot, and do not guarantee the accuracy or correctness of any interpretation, and we shall not, except in the case of gross or willful negligence or our part, be liable or responsible for any loss, costs, damages or expenses incurred or sustained by anyone resulting from any interpretation made by any of our officers, agents or employees. These interpretations are also subject to Clause 4 of our General Terms and Conditions as set out in our current Price Schedule.

Run No.	ONE
Service Order No.	595174
Drilling Fluid Level	20.0 F
Salinity	1080.0 PPM
Rmt @ BHT	1567 OHMM @ 98.0 DEG
Rmo @ BHT	1387 OHMM @ 98.0 DEG
Logging Speed	3600.0 F/HR

EQUIPMENT DATA	
Tool Number 1	DIS-EC 208
Tool Number 2	DIC-EB 1078
Tool Number 3	SUC-MA 1326
Tool Number 4	SLS-WA 1429
Tool Number 5	SGC-JC 060
Tool Number 6	MCD-DA 063
Tool Number 7	SLM-DA 428
Tool Number 8	NLM-BC 418
Tool Number 9	IEM-BD 304
Tool Number 10	
Tool Number 11	
Tool Number 12	

REMARKS:  
 TWO CMEZ'S AND ONE STANDOFF RUN TO CENTRALIZE SONIC  
 TWO RUBBER STANDOFFS RUN ON DL  
 HOLE DEVIATED 18.75 DEGREES AT 2400'  
 TAYLOR DRILLING RIG #7  
 HOLE SIDETRACKED AT 592'  
 THANK YOU FOR USING SCHLUMBERGER

LOGGING TOOL STRING SKETCH



TOTAL TOOL STRING LENGTH IS 69.2 F.  
 TOTAL TOOL STRING WEIGHT IS 993. LB IN AIR.

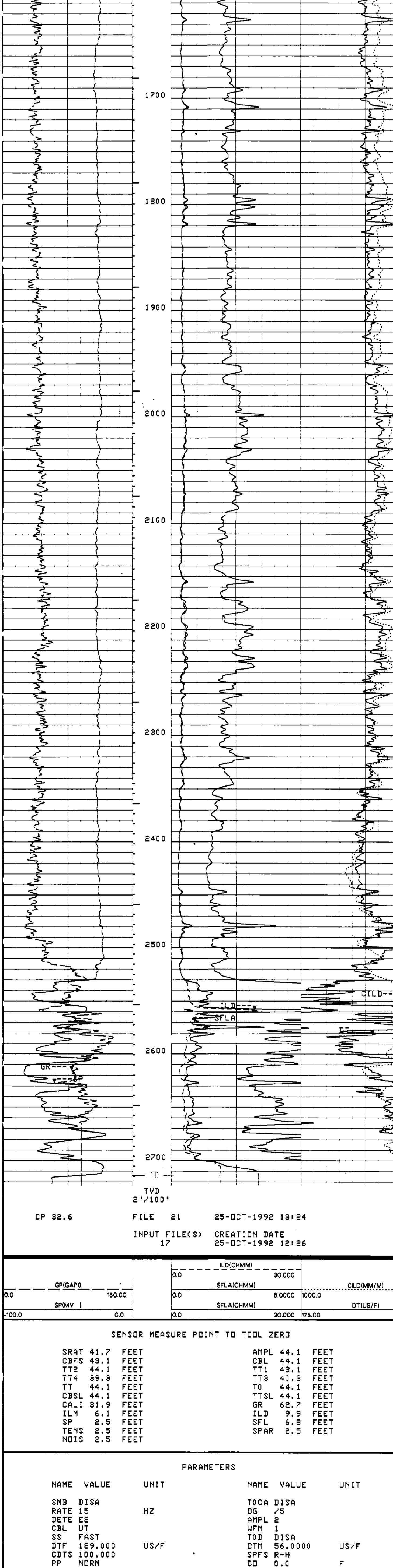
INCLINOMETRY LIST

TIE DEPTH	MEAS. DEPTH = 509.0 FEET	DEVI = 0.0 DEG	TVD = 509.0 FEET
	MEAS. DEPTH = 614.0 FEET	DEVI = 0.50 DEG	TVD = 614.0 FEET
	MEAS. DEPTH = 677.0 FEET	DEVI = 2.50 DEG	TVD = 677.0 FEET
	MEAS. DEPTH = 797.0 FEET	DEVI = 5.25 DEG	TVD = 796.8 FEET
	MEAS. DEPTH = 799.0 FEET	DEVI = 8.25 DEG	TVD = 798.4 FEET
	MEAS. DEPTH = 862.0 FEET	DEVI = 10.00 DEG	TVD = 860.6 FEET
	MEAS. DEPTH = 923.0 FEET	DEVI = 13.00 DEG	TVD = 920.4 FEET
	MEAS. DEPTH = 1100.0 FEET	DEVI = 11.75 DEG	TVD = 1093.3 FEET
	MEAS. DEPTH = 1256.0 FEET	DEVI = 12.00 DEG	TVD = 1246.0 FEET
	MEAS. DEPTH = 1417.0 FEET	DEVI = 11.50 DEG	TVD = 1403.6 FEET
	MEAS. DEPTH = 1571.0 FEET	DEVI = 10.75 DEG	TVD = 1554.7 FEET
	MEAS. DEPTH = 1790.0 FEET	DEVI = 10.00 DEG	TVD = 1770.1 FEET
	MEAS. DEPTH = 1951.0 FEET	DEVI = 9.75 DEG	TVD = 1928.7 FEET
	MEAS. DEPTH = 2014.0 FEET	DEVI = 11.00 DEG	TVD = 1992.7 FEET
	MEAS. DEPTH = 2077.0 FEET	DEVI = 11.00 DEG	TVD = 2052.6 FEET
	MEAS. DEPTH = 2138.0 FEET	DEVI = 12.50 DEG	TVD = 2112.3 FEET
	MEAS. DEPTH = 2203.0 FEET	DEVI = 14.00 DEG	TVD = 2172.3 FEET
	MEAS. DEPTH = 2263.0 FEET	DEVI = 15.50 DEG	TVD = 2233.6 FEET
	MEAS. DEPTH = 2325.0 FEET	DEVI = 17.00 DEG	TVD = 2293.1 FEET
	MEAS. DEPTH = 2385.0 FEET	DEVI = 18.75 DEG	TVD = 2381.6 FEET
	MEAS. DEPTH = 2465.0 FEET	DEVI = 18.75 DEG	TVD = 2445.0 FEET
	MEAS. DEPTH = 2770.0 FEET	DEVI = 18.00 DEG	TVD = 2715.5 FEET

CP 32.6 FILE 21 25-OCT-1992 13:34

GR(GAPI)	160.00	LD(OHMM)	0.0	30.000	CILD(MM/M)	0.0
SP(MV)	0.0	SFLA(OHMM)	0.0	6.000	DT(US/F)	0.0
	0.0	SFLA(OHMM)	0.0	30.000		75.000

CP 32.6 FILE 21 25-OCT-1992 13:34  
 INPUT FILE(S) 17 CREATION DATE 25-OCT-1992 12:26



CP 32.6 FILE 21 25-OCT-1992 13:34  
 INPUT FILE(S) 17 CREATION DATE 25-OCT-1992 12:26

GR(GAPI)	160.00	ILD(OHMM)	0.0	30.000	CILD(MM/M)	0.0
SP(MV)	0.0	SFLA(OHMM)	0.0	6.000	DT(US/F)	0.0
	0.0	SFLA(OHMM)	0.0	30.000		75.000

SENSOR MEASURE POINT TO TOOL ZERO

SRAT 41.7 FEET	AMPL 44.1 FEET
CBFS 43.1 FEET	CBL 44.1 FEET
TT2 44.1 FEET	TT1 43.1 FEET
TT4 39.3 FEET	TT3 40.3 FEET
TT 44.1 FEET	TTSL 44.1 FEET
CBLS 44.1 FEET	GR 62.7 FEET
CALI 31.9 FEET	ILD 9.9 FEET
ILM 5.1 FEET	SFL 6.8 FEET
SP 5.5 FEET	SFLA 2.5 FEET
TENS 2.5 FEET	
NDIS 2.5 FEET	

PARAMETERS

NAME	VALUE	UNIT	NAME	VALUE	UNIT
SMB	DISA		TOCA	DISA	
RATE	15	HZ	DG	75	
DETE	E2		AMPL	2	
CBL	UT		WFM	1	
SS	FAST		TOD	DISA	
DTF	189.000	US/F	DTM	56.0000	US/F
CDTS	100.000		SPFS	R-H	
PP	NDRM		DO	0.0	F
HNUD	10.0000	LB/G	MSEC	5.90000	MM/M
SBR	1.00000	OHMM	DSEC	6.60000	MM/M
FCD	5.50000	IN	NCJT	GRY	
FRHI	SPHI		DWCO	512	
FSIN	5	US	DDEL	200	
SPVD	0.0	F	SINT	10.0000	US
BS	7.87500	IN	BHS	OPEN	M

COMPANY NAHAMA AND WEAGANT ENERGY CO. SCHL. FR 2769.0 F  
 WELL FISHAWK/WILSON 11A-5-65 RD#1 SCHL. TD 2769.0 F  
 FIELD MIST Elev. KB 616.0 F  
 COUNTY COLUMBIA STATE OREGON DF  
 GL 604.0 F

