

COMPANY NAHAMA AND WEAGANT ENERGY CO.
WELL FISHHAWK/WILSON 11A-5-65 RD#1
FIELD MIST

COUNTY COLUMBIA STATE OREGON
LOCATION 1385'E ANI 274'S
FROM 118 NW CORNER OF T4D THANK YOU

APL SERIAL NO. 36-009 00296
SECT. 5
TWP. 5N
RANGE 5W
Elev. 604.0 F
Elev. 604.0 F
D.F. 11.0 F
GL 604.0 F

DATE 25-OCT-1992
PLUT NO. ONE
DEPTH DRILLER 2770.0 F
DEPTH LOGGER (SFL) 2769.0 F
Btm. Log Interval 2763.0 F
Top Log Interval 509.0 F
Casing-Driller 8 625 @ 509.0 F
BIT SIZE 7.875 @ 2770.0 F
Type Fluid in Hole GEL DMS/SPAC

Dens. 10.00 LB/VS 45.0 S
pH FID LOSS B5 6.0 C3
Source of Sample FLOWLINE
Fm @ Meas. Temp. 1890 CHMM @ 72.0 DEGF
Fm @ Meas. Temp. 2140 CHMM @ 60.0 DEGF
Fm @ Meas. Temp. 2180 CHMM @ 60.0 DEGF
Source: Rmt Fsmc ME/AS @ 98.0 DEGF
Fm @ BHT 1497 CHMM @ 98.0 DEGF

Calculation Ended 25-OCT-92 10:00
Logger on Bottom 25-OCT-92 12:30
Max. Rec. Temp. 98.0 DEGF
Equip. Location 8504 SACHAMENITO
Recorded by JOHN LOPEZ
Financed by LUCAS / PINDITTI

Other Services:
DL, RH, CR
TYD
THANK YOU

The well name, location and borehole reference data were furnished by the customer

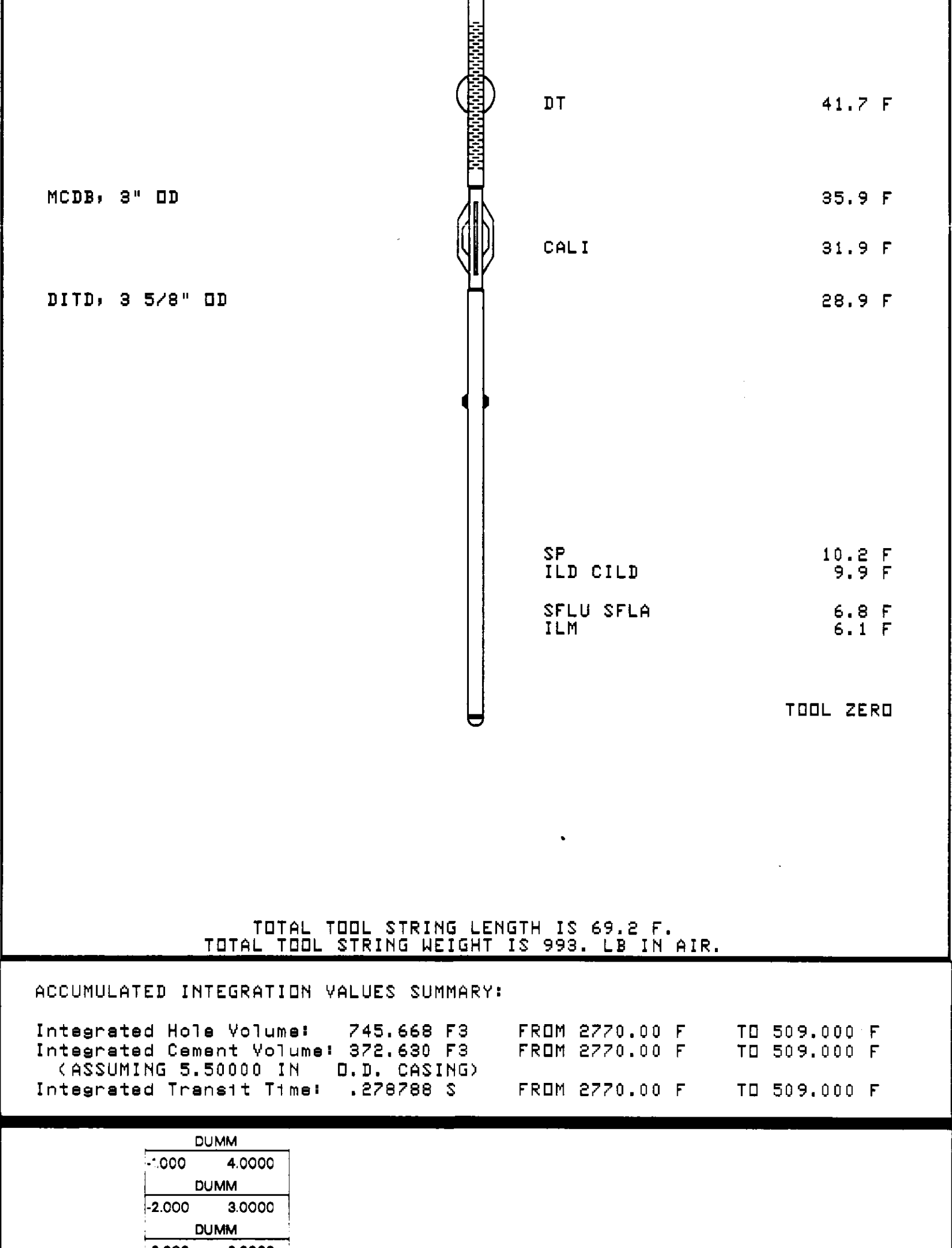
All interpretations are opinions based on inferences from electrical or other measurements and we cannot, and do not guarantee the accuracy or correctness of any interpretations, and we shall not, except in the case of gross or willful negligence on our part, be liable or responsible for any loss, costs, damages or expenses incurred or sustained by anyone resulting from any interpretations made by any of our officers, agents or employees. These interpretations are also subject to Clause 4 of our General Terms and Conditions as set out in our current Price Schedule.

Run No.	ONE
Service Order No.	886174
Drilling Fluid Level	20.0 F
Salinity	1060.0 PPM
Rmt @ BHT	1.557 CHMM @ 88.0 DEGF
Rmo @ BHT	1.387 CHMM @ 88.0 DEGF
Logging Speed	3800.0 F/H-R

EQUIPMENT DATA	
Tool Number 1	DIS-EC 288
Tool Number 2	DIC-EB 078
Tool Number 3	SLC-MA 1328
Tool Number 4	SL5-WA 1428
Tool Number 5	SGC-C 880
Tool Number 6	MCD-DA 863
Tool Number 7	SLM-DA 428
Tool Number 8	NLM-BC 418
Tool Number 9	IEM-BD 304
Tool Number 10	
Tool Number 11	
Tool Number 12	

REMARKS:
TWO CMEZ'S AND ONE STANDOFF RUN TO CENTRALIZE SONIC
TWO RUBBER STANDOFFS RUN ON DIL
HOLE DEVIATED 18.76 DEGREES AT 2400'
TAYLOR DRILLING LOG #7
HOLE SIDETRACKED AT 592'
THANK YOU FOR USING SCHLUMBERGER

LOGGING TOOL STRING SKETCH



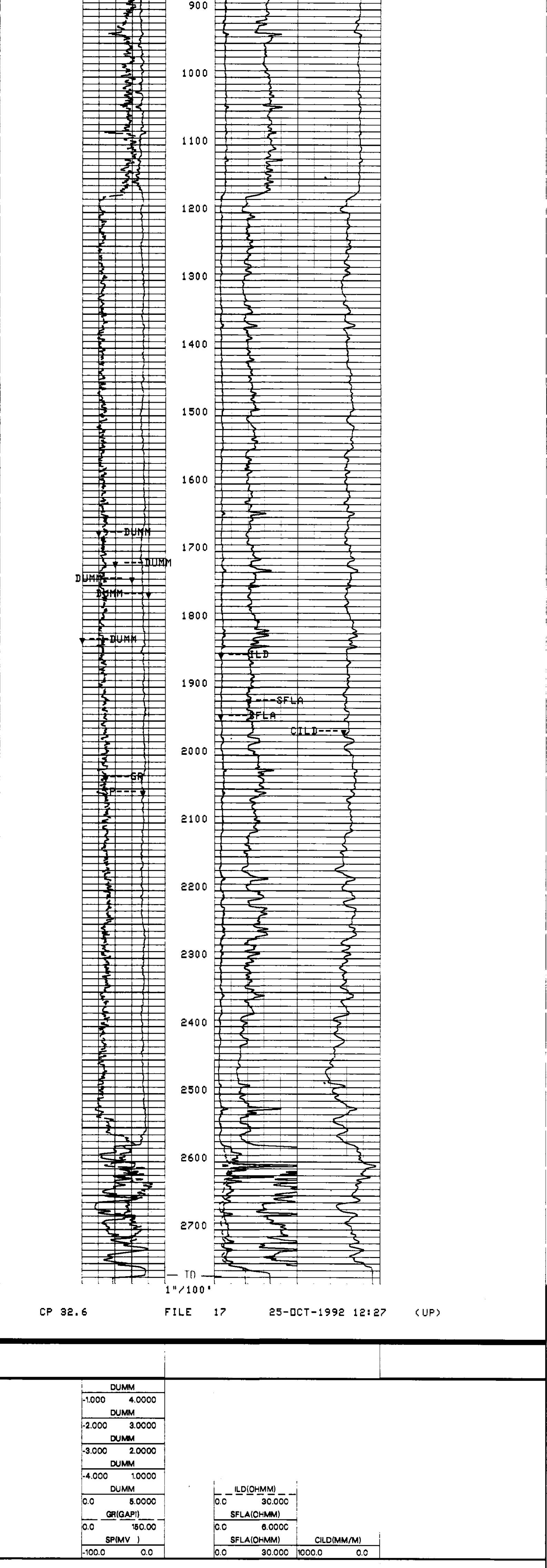
TOTAL TOOL STRING LENGTH IS 69.2 F.
TOTAL TOOL STRING WEIGHT IS 993. LB IN AIR.

ACCUMULATED INTEGRATION VALUES SUMMARY:

Integrated Hole Volume:	745.668 F3	FROM 2770.00 F	TO 509.000 F
Integrated Cement Volume:	372.630 F3	FROM 2770.00 F	TO 509.000 F
(ASSUMING 5.50000 IN D.D. CASING)			
Integrated Transit Time:	.278788 S	FROM 2770.00 F	TO 509.000 F

DUMM	ILD(OHMM)	SFLA(OHMM)	CILD(MM/M)
-0.000 4.0000	0.0 30.000	0.0 6.0000	0.0 1000.0 0.0
DUMM	SFLA(OHMM)		
-2.000 3.0000	0.0 6.0000		
DUMM			
-3.000 2.0000			
DUMM			
-4.000 1.0000			
DUMM			
0.0 6.0000			
GR(GAPI)			
0.0 60.00			
SP(MV)			
-00.0 0.0			

CP 32.6 FILE 17 25-OCT-1992 13:10 (UP)



DUMM	ILD(OHMM)	SFLA(OHMM)	CILD(MM/M)
-1.000 4.0000	0.0 30.000	0.0 6.0000	0.0 1000.0 0.0
DUMM	SFLA(OHMM)		
-2.000 3.0000	0.0 6.0000		
DUMM			
-3.000 2.0000			
DUMM			
-4.000 1.0000			
DUMM			
0.0 6.0000			
GR(GAPI)			
0.0 60.00			
SP(MV)			
-100.0 0.0			

SENSOR MEASURE POINT TO TOOL ZERO			
SRAT	41.7 FEET	AMPL	44.1 FEET
CBFS	43.1 FEET	CBL	44.1 FEET
TT2	44.1 FEET	TT1	43.1 FEET
TT4	39.3 FEET	TT3	40.3 FEET
TT	44.1 FEET	TO	44.1 FEET
CBSL	44.1 FEET	TTSL	44.1 FEET
CALI	31.9 FEET	GR	62.7 FEET
ILM	6.1 FEET	ILD	9.9 FEET
SP	2.5 FEET	SFL	6.8 FEET
TENS	2.5 FEET	SPAR	2.5 FEET
NOIS	2.5 FEET		

PARAMETERS				
NAME	VALUE	UNIT	NAME	VALUE
SMB	DISA		TOCA	DISA
RATE	15	HZ	DG	2
DETE	E2		AMPL	2
CBL	UT		WFM	1
SS	FAST		TOD	DISA
DTF	189.000	US/F	DTM	56.0000
CDTS	100.000		SPFS	R-H
WMUD	10.0000	LB/G	MSEC	5.90000
SBR	1.00000	OHMM	DSEC	6.60000
FCD	5.50000	IN	NCJT	GSRY
FPHI	SPHI		DWCD	512
DSIN	5	US	DDEL	200
BS	7.87500	IN	BHS	OPEN

COMPANY	NAHAMA AND WEAGANT ENERGY CO.	8CHL. FR	2763.0 F
WELL	FISHHAWK/WILSON 11A-5-65 RD#1	8CHL. TD	2769.0 F
FIELD	MIST	DRLR. TD	2770.0 F
COUNTY	COLUMBIA	Elev.	KB 616.0 F
			DF
			GL 604.0 F