

COMPANY	NAHAMA AND WEAGANT ENERGY CO.	WELL	"FISHAWK/WILSON" #11A-5-65
FIELD	MIST	COUNTY	COLUMBIA
STATE	OREGON	LOCATION	1385'E AND 274'S
AP SERIAL NO.	36-009 00296	SECT.	5
AP LOCATION	FROM NW CORNER	TWP.	6N
AP SERIAL NO.	36-009 00296	RANGE	5W
AP LOCATION	FROM NW CORNER	Other Services:	DL-DRIC OR SHDT
Permeant Datum	CL	Elev.	604.0 F
Log Measured From	KB	above Perm. Datum	11.0 F
Drilling Measured From	KB	Elev. K.B. @ 5.0 F	61.0 F
Date	19 OCT 1992	D.F.	61.0 F
Run No.	ONE	GL @ 604.0 F	
Depth Driller	2765.0 F		
Depth Logger (Sck)	2765.0 F		
Blm. Log Interval	2765.0 F		
Top Log Interval	1750.0 F		
Casing-Driller	8 5/8" @ 508.0 F		
Casing-Logger	508.0 F		
Bit Size	7 7/8" @ 2765.0 F		
Type Fluid in Hole	GEL DISPAC		
Dens	9.60 LB/G	40.0 S	
pH		6.0 C3	
Source of Sample	TI OMLINE		
Rmf @ Meas. Temp.	2280 CHMM	@ 79.0 DEG	
Rmc @ Meas. Temp.	3530 CHMM	@ 64.0 DEG	
Rmc @ Meas. Temp.	2130 CHMM	@ 64.0 DEG	
Source: Rmf/ Rmc	MEASURED	MEASURED	
Rin @ BHT	1904 CHMM	@ 96.0 DEG	
Calculation Ended	16:00 10-19		
Logger on Bottom	22:00 10-19		
Max. Rec. Temp.	96.0 DEG		
Equip. Location	B504	SACRAMENTO	
Recorded By	SCOTT PILCH		
Witnessed By	LUCAS / PINOTTI		

The well name, location and borehole reference data were furnished by the customer

All interpretations are opinions based on inferences from electrical or other measurements and we cannot, and do not guarantee the accuracy or correctness of any interpretations, and we shall not, except in the case of gross or willful negligence or our part, be liable or responsible for any loss, costs, damages or expenses incurred or sustained by anyone resulting from any interpretations made by any of our officers, agents or employees. These interpretations are also subject to Clause 4 of our General Terms and Conditions as set out in our current Price Schedule.

Run No.	ONE
Service Order No.	695070
Drilling Fluid Level	5.0 F
Salinity	800.0 PPM
Rmf @ BHT	2433 CHMM @ 96.0 DEG
Rmc @ BHT	1468 CHMM @ 96.0 DEG
Logging Speed	3600.0 F/HR
EQUIPMENT DATA	
Tool Number 1	SHDS-B 948
Tool Number 2	SHDC-A 964
Tool Number 3	MCD-DA 1237
Tool Number 4	TCC-B 663
Tool Number 5	TCM-AB 1317
Tool Number 6	
Tool Number 7	
Tool Number 8	
Tool Number 9	
Tool Number 10	
Tool Number 11	
Tool Number 12	
REMARKS:	

MAIN LOG

SHDT CYBERDIP

STRUCTURAL DIP NOT REMOVED

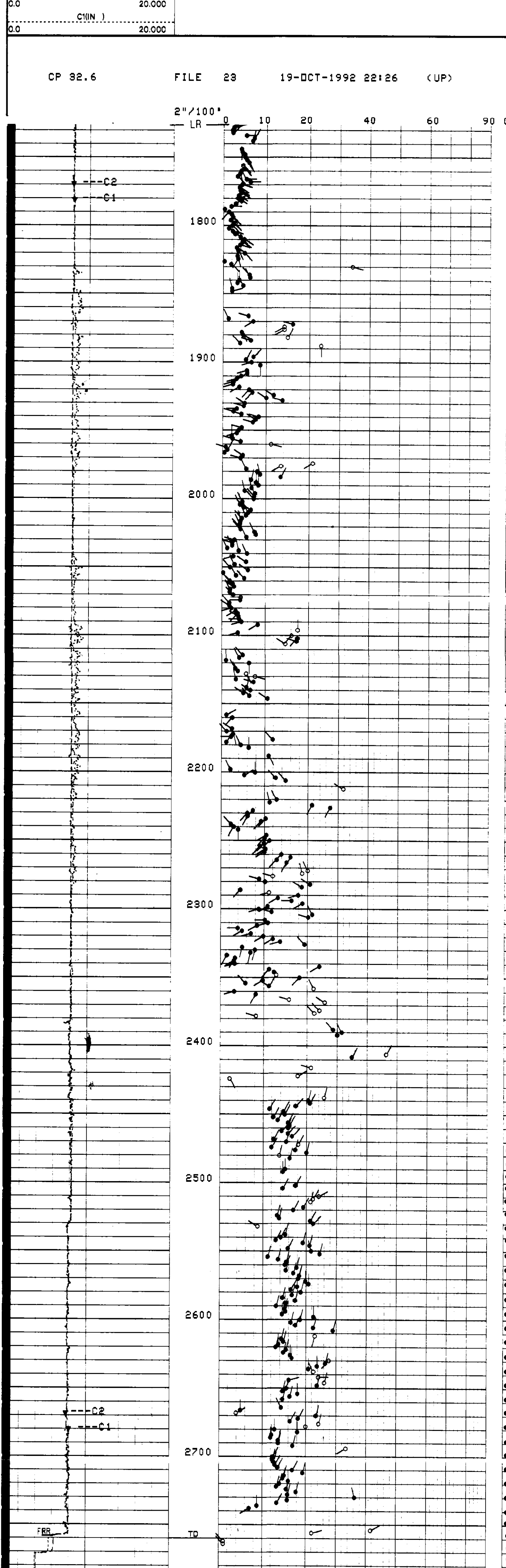
MIRROR IMAGES NOT REMOVED

SPEED CORRECTION NOT APPLIED

NO KNUCKLE JOINT IS USED (SOFF = -1)

C2(IN)	20.000
C1(IN)	20.000

CP 32.6 FILE 23 19-OCT-1992 22:26 (UP)



CP 32.6 FILE 23 19-OCT-1992 22:00 (UP)

C2(IN)	20.000
C1(IN)	20.000

SENSOR MEASURE POINT TO TOOL ZERO

SHDW 1.3 FEET TENS -10.8 FEET

RSWD 1.3 FEET ZB 1.3 FEET

PARAMETER	VALUE	UNIT
PADT - Presentation Allow Disallow Threshold	.500000	DEG
MFIN - Magnetic Field Intensity	.540000	DEG
MDEC - Magnetic Field Declination	19.5000	DEG
MINC - Magnetic Field Inclination	68.0000	DEG
SHDS - Stratigraphic HiRes Dipmeter Sonde	B	
SHDI - SHDT Inclinator	BB	
VREF - Voltage Reference	-5.00000	V
FCDD - Fast Channel Depth Definition	1.	
SOFF - Stand Off	-1.00000	IN
IDFO - Input Data Format	RAW	
DDFO - Output Data Format	RAW	
ICMO - Inclinerometry Computation Mode	AUTO	
AFMD - Accelerometer Filtering Mode	HAMM	
XMOD - EMEC Voltage Regulation Mode	AUTO	
XGAI - Gain Setting	2	
XGFF - Offset Setting	0	
FCD - Future Casing Diameter	4.50000	IN
SPCR - Speed Correction Constant	DISA	
DSCA - Deviation Scale	10	DEG
SBUT - Set of Buttons Selected	ALL	
INT - Correlation Interval Length	4.00000	F
STEP - Step Length between Correlations	2.00000	F
SPAN - Span of Correlation Sample	4	
SANG - S Wave Arrival Angle	45.0000	
DPAD - Disallowed Rad	AUTO	
DMAX - Maximum Dip Plotted	90	DEG
ELRA - Electrical Radius	.500000	IN
SDFA - Side-By-Side Distance Factor	.900000	
HGUA - High Quality Dip	14	
LQUA - Low Quality Dip	6	
STDI - Structural Dip	0.0	DEG
STDA - Structural Azimuth Value	0.0	DEG
CSBL - CSB Number of Levels	2	
BS - Bit Size	7.87500	IN
BHS - Borehole Status (Open or Cased)	OPEN	

COMPANY	NAHAMA AND WEAGANT ENERGY CO.	SOHL. FR	2768.0 F
WELL	"FISHAWK/WILSON" #11A-5-65	SOHL. TD	2760.0 F
FIELD	MIST	DRLR. TD	2765.0 F
COUNTY	COLUMBIA	Elev: KB	616.0 F
STATE	OREGON	DF	
		QL	604.0 F