

Scanned
Schlumberger
CYBERDIP

COLUMBIA COUNTY, OREGON
 LOCATION: MIST FIELD
 WELL: "FISHAWK/WILSON" #11A-5-65
 COMPANY: NAHAMA AND WEAGANT ENERGY CO.
 FIELD: MIST
 COUNTY: COLUMBIA
 STATE: OREGON
 LOCATION FROM NW CORNER: 18865 AND 2748
 PERMITS: NAHAMA AND WEAGANT ENERGY CO. #11A-5-65
 AN SERIAL NO: 36-009-00396
 INSTRUMENT: 2760.0 F
 DATE: 19-OCT-1992
 DIAMETER: 8 5/8" I
 TOP LOG INTERVAL: 7/8" I
 CHASING: 9 5/8" I
 BIT SIZE: 7/8" I
 TYPE FOUND IN TOOL: 8 5/8" I
 DEPTH: 800 FT
 HEAD LOSS: 80 FT
 SOURCE OF SAMPLES: FLOWLINE
 RUN LOGS: 2760.0 F
 TEMPERATURE: 33.500 C
 PRESSURE: 33.500 C
 STABILIZATION TIME: 15.000 MIN
 LOGGING ON BOTTOM: 2200.0 F
 LOGGING OFF BOTTOM: 1600.0 F
 LOGGING INTERVAL: 10.000 F
 LOGGING RATE: 3600.0 F/HR
 EQUIP: 804
 FACILITY: FACHMANTO
 RECORDED BY: SCOTT MCH
 CHECKED BY: LUCAS PEROTTI

The well name, location and borehole reference data were furnished by the customer.

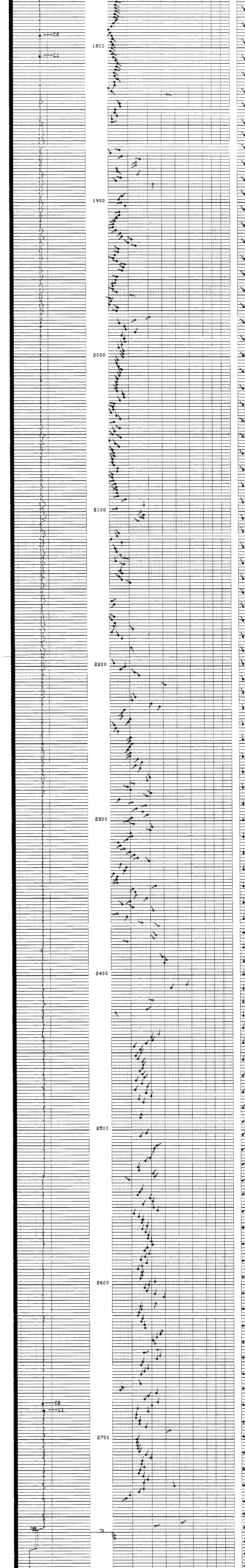
All interpretations are opinions based on inference from electrical or other measurements and we cannot, and do not, guarantee the accuracy or correctness of any interpretations, and we shall not, except in the case of gross or willful negligence or our part, be liable or responsible for any loss, costs, damages or expenses incurred or sustained by anyone resulting from any interpretations made by any of our officers, agents or employees. These interpretations are also subject to Class 4 of our General Terms and Conditions as set forth in our current Price Schedule.

Run No. CNE
 Service Order No. 885070
 Drilling Fluid Level: 2400 RPM
 Salinity: 2433 OHMM @ 86.0 DEGF
 Rmo @ BHT: 1468 OHMM @ 86.0 DEGF
 Logging Speed: 3600.0 F/HR
 EQUIPMENT DATA:
 Tool Number 1: SHDS-B 846
 Tool Number 2: SHDC-A 864
 Tool Number 3: MCD-DA 1337
 Tool Number 4: TCC-B 663
 Tool Number 5: TCM-AB 1317
 Tool Number 6:
 Tool Number 7:
 Tool Number 8:
 Tool Number 9:
 Tool Number 10:
 Tool Number 11:
 Tool Number 12:
 REMARKS:

MAIN LOG

SHDT CYBERDIP
 STRUCTURAL DIP NOT REMOVED
 MIRRDR IMAGES NOT REMOVED
 SPEED CORRECTION NOT APPLIED
 NO KNUCKLE JOINT IS USED (SOFF = -1)

CP 32.6 FILE 23 19-OCT-1992 22:26 (UP)



CP 32.6 FILE 23 19-OCT-1992 22:00 (UP)

SENSOR MEASURE POINT TO TOOL ZERO

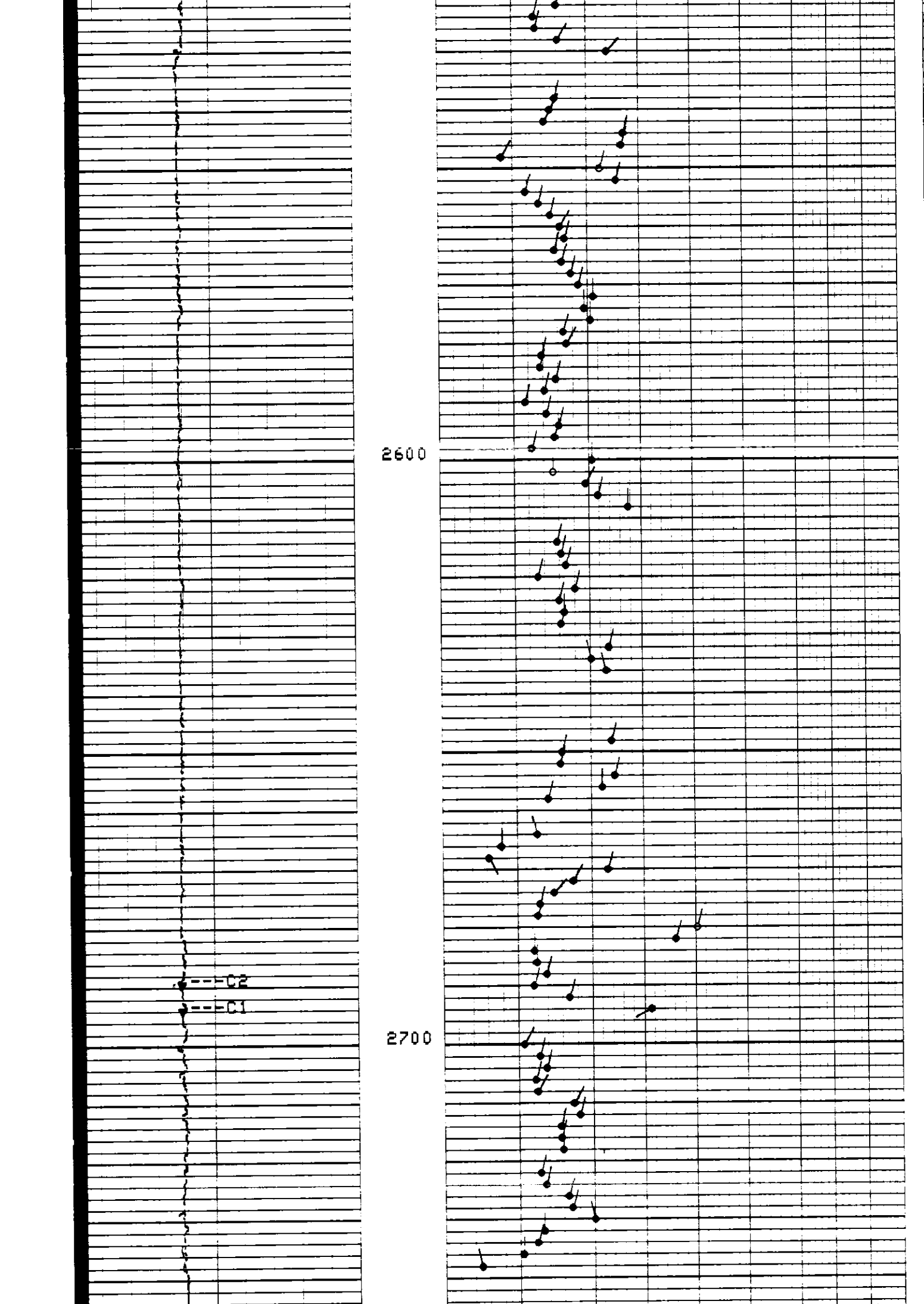
SHDW 1.3 FEET TENS -10.8 FEET
 RSHD 1.3 FEET ZB 1.3 FEET

PARAMETERS

PARAMETER	VALUE	UNIT
PADT - Presentation Allow Disallow Threshold	.500000	DEG
MFIN - Magnetic Field Intensity	.540000	DER
MBEC - Magnetic Field Declination	19.5000	DEG
MINC - Magnetic Field Inclination	68.0000	DEG
SHDS - Stratigraphic HiRes Diameter Sonde	B	
SHDI - SHDT Inclonometer	BB	
VREF - Voltage Reference	-5.00000	V
FCDD - Fast Channel Depth Definition	1	
SDPF - Stand Off	-1.00000	IN
IDFO - Input Data Format	RAW	
ODFO - Output Data Format	RAW	
ICMD - Inclometry Computation Mode	AUTO	
AFMD - Accelerometer Filtering Mode	HAMM	
XVMD - EMEX Voltage Regulation Mode	AUTO	
XGAI - Gain Setting	6	
XDPF - Driftet Setting	6	
FCD - Future Casina Diameter	4.50000	IN
SPCR - Speed Correction Constant	DISA	
DSCA - Deviation Scale	10	DEG
SBU - Set of Buttons Selected	ALL	
INT - Correlation Interval Length	4.00000	F
STEP - Step Length between Correlations	2.00000	F
SPAN - Span of Correlation Sample	4	
SANG - S Wave Arrival Angle	45.00000	
DPAD - Disallowed Pad	AUTO	
DMAX - Maximum Dip Plotted	90	DEG
ELRA - Electrical Radius	.500000	IN
SFA - Side-By-Side Distance Factor	.900000	
HQUA - High Quality Dip	14	
LQUA - Low Quality Dip	6	
STDI - Structural Dip	0.0	DEG
STDA - Structural Azimuth Value	0.0	DEG
CSBL - CSB Number of Levels	7	
BS - Bit Size	7.87500	IN
BHS - BoreHole Status (Open or Cased)	OPEN	

REPEAT SECTION

CP 32.6 FILE 22 19-OCT-1992 21:48 (UP)



CP 32.6 FILE 22 19-OCT-1992 21:48 (UP)

COMPANY: NAHAMA AND WEAGANT ENERGY CO. SCHL. FR 2768.0 F
 WELL: "FISHAWK/WILSON" #11A-5-65 DRLR. TD 2768.0 F
 FIELD: MIST Elev: KB 618.0 F
 COUNTY: COLUMBIA STATE: OREGON DF
 CYBERDIP QL 604.0 F

