

FILING NO.

COMPANY American Caster Richard

WELL WATERBURY 13-31

FIELD LEHICOLA EAST ALBANY

STATE OREGON

RECORDING PARTY MARION

DATE FEB 24 1952

LOCATION SECTION 13 TWP 10S RGE 3W

OTHER SERVICES

PERMITS

LOGGING MEASURED FROM 117

DATE 2 OCT 51

RUN NO. ONE

DEPTH - LOGGED 1927

TOP LOG INTERVAL 1000

OPEN HOLES SIZE 7/8"

STARTING STRING 7/8"

PROT. STRING 7/8"

TYPE Surface

VOL. OF CEMENT

ACTIVE BY %

RESISTER BY %

WTR. SLURRY

WEIGHT LOSS

DRILL MUD TYPE

DRILLING MUD WTR.

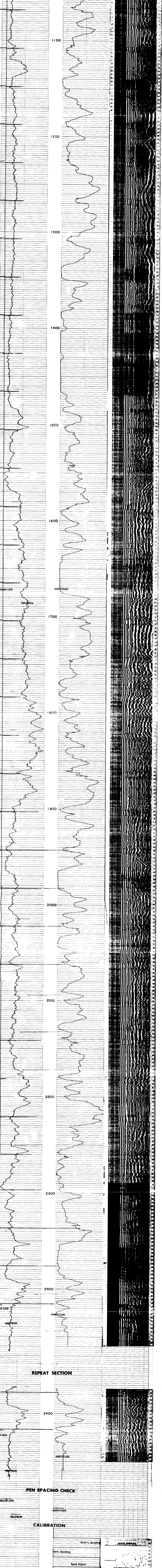
Penetration Depth	46	Em. 3 3/4"	48	3 1/2"
Log Measured From	117	117 Ft. Above Penetration Datum	DF	2 3/4"
Drilling Measured From	117			
Date	2 OCT 51	Type Fluid in Hole	HTC	
Run No.	ONE	HTCs		
Depth - Logged	1927	HTCs to Vac.	116 7/8	
Top Log Interval	1000	Est. Cement Top		
Open Hole Size	7/8"	Emulsi. Location	8 1/2' - 15' - 34' 10"	
Starting String	7/8"	Retrieved By	M. MARION	
Prot. String	7/8"	W/Type Joint	Top	Bottom
Type	Surface	Casing Rec.		
Vol. of Cement		W/Type Joint		
Active by %				
Resister by %				
Wtr. Slurry				
Weight Loss				
Drill Mud Type				
Drilling Mud Wtr.				

PRIMARY CEMENTING PROCEDURE				BOND EQUIPMENT DATA			
Started Pumping Cement	Hour	Date	Tool No.	Tool Type	Tool Size	Tool Size	3.25
Plug on Bottom			Centralizer:	Type	Rubber	Size	
Release Pressure			Amplitude	Transmitter to Receiver Spacing	5	Travel Time	
Finish Cementing Operation				Seismic Spectrum			
Start Cement Bond Log							
Finish Cement Bond Log							

GAMMA RAY EQUIPMENT & LOGGING DATA									
Tool No.	Depths	Speed	T. C.	Bks.	Cal.	Sens.	Zero	Api Per	
Tool Model No.	From To	FPM	Sec.	Cps.	Cps.		Div. L or R	Log Div.	
Diameter									
Detector Model No.									
Type									
Length									
Distance to N. Source									

NOTICE: All interpretations are opinions based on inferences from electrical or other measurements and we cannot, and do not, guarantee the accuracy or correctness of any interpretations, and we shall not, except in the case of gross or willful negligence on our part, be liable or responsible for any loss, costs, damages or expenses incurred or sustained by anyone resulting from any interpretation made by one of our officers, agents or employees. These interpretations are also subject to our General Terms and Conditions as set out in our current Form Schedule.

NUCLEAR LOG	AMPLITUDE	SEISMIC SPECTRUM
	MILLIVOLTS	RECORDING
COLLAR LOG	TRAVEL TIME	MICRO SECONDS
	MICRO SECONDS / FT.	
	SINGLE RECEIVER TRAVEL TIME	
	MICRO SECONDS / FT.	



REPEAT SECTION		PEN SPACING CHECK		CALIBRATION	
AMPLITUDE	NEUTRON	AMPLITUDE	NEUTRON	Zero % Bonding	CALIBRATION SIGNAL
				100% Bonding	
				Span Adjust	
				Zero	