

# Baker Middle School

Bake\_sch06A

Baker SD 5J

Building Type		County	
School		Baker	
Street			
2090 4th St			
City	State	Zip	
Baker City	OR	97814	
Latitude		Longitude	
44.77751		117.83488	
Tracking Code		Inspection Date	
RVS in 2006		8/11/2006	



Seismicity Zone: Moderate

## FEMA 154 Rapid Visual Screening Score Card

	Type	Basic Score	Vert Irreg	Plan Irreg	Pre-Code	Post-Bench	Soil C	Soil D	Soil E	RVS Score
Primary	URM	3.4	-1.5	-0.5	-0.4	0	0	-0.8	0	0.2
Secondary		0	0	0	0	0	0	0	0	0
Tertiary		0	0	0	0	0	0	0	0	0

Baker Middle School

## Final RVS Score

Final Type

Final Score

URM

0.2

FEMA-154 Collapse Potential

High (>10%)



OregonGeology

Rapid Visual Screening - Senate Bill #2 - Seismic Needs Assessment  
Oregon Department of Geology and Mineral Industries

Enrollment	Year Built (Field Verified)	Year Built (Alt. Source)	Est. Decade Built
350		1916	1920
Total Area (square ft)	Number of Stories	Basement	Pounding Potential
54000	2	Yes	No

Plan Irregularities	Vertical Irregularities
Reentrant Corners: Other	Steps in Elevation View: Single Change
Out of Plane Lateral-Force-Resistance Elements	None
None	None

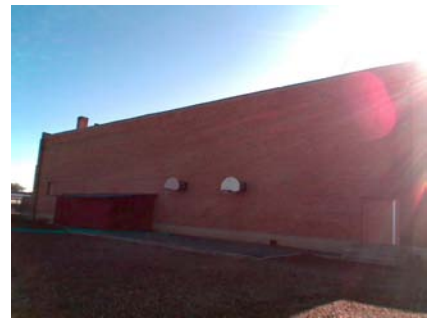
Falling Hazards	Poor Conditions
Unreinforced Chimneys	None
None	None
None	None



E Elevation View



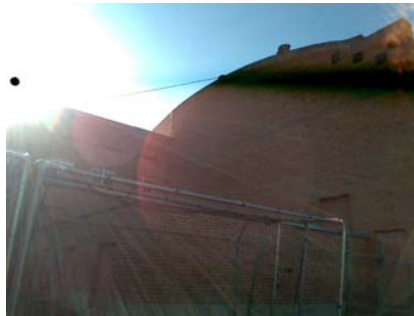
S Elevation View



W Elevation View



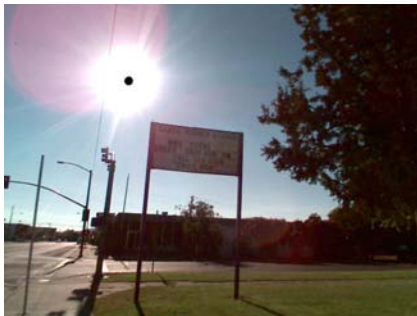
W Falling Hazard



W Vertical Irregularity Primary



W Primary Structural Type



W Building Name





# Baker Middle School

Bake\_sch06B

Baker SD 5J

Building Type		County	
School		Baker	
Street			
2320 Washington Ave			
City	State	Zip	
Baker City	OR	97814	
Latitude		Longitude	
44.77675		117.83619	
Tracking Code		Inspection Date	
RVS in 2006		8/11/2006	



Seismicity Zone: Moderate

## FEMA 154 Rapid Visual Screening Score Card

	Type	Basic Score	Vert Irreg	Plan Irreg	Pre-Code	Post-Bench	Soil C	Soil D	Soil E	RVS Score
Primary	URM	3.4	-1.5	-0.5	-0.4	0	0	-0.8	0	0.2
Secondary		0	0	0	0	0	0	0	0	0
Tertiary		0	0	0	0	0	0	0	0	0

Baker Middle School

## Final RVS Score

Final Type

Final Score

URM

0.2

FEMA-154 Collapse Potential

High (>10%)



OregonGeology

Rapid Visual Screening - Senate Bill #2 - Seismic Needs Assessment  
Oregon Department of Geology and Mineral Industries

Enrollment	Year Built (Field Verified)	Year Built (Alt. Source)	Est. Decade Built
350	1916	1916	1910
Total Area (square ft)	Number of Stories	Basement	Pounding Potential
54000	2	Yes	No

Plan Irregularities	Vertical Irregularities
Reentrant Corners: T shaped	Steps in Elevation View: Single Change
None	None
None	None

Falling Hazards	Poor Conditions
None	None
None	None
None	None



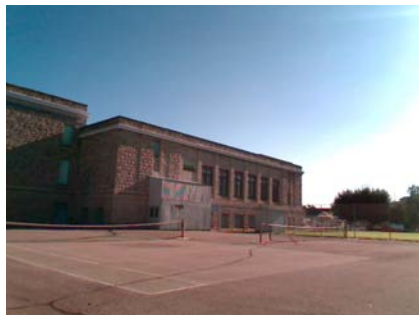
E Field Verified Year Built



NW Elevation View



N Elevation View



SW Elevation View