

# Barlow Hall

Clackamas CC

Clac\_coc09A

Building Type		County	
Community_College		Clackamas	
Street			
19600 S. Molalla Avenue			
City	State	Zip	
Oregon City	OR	97045	
Latitude	Longitude		
45.32315	122.573		
Tracking Code	Inspection Date		
RVS in 2006	9/22/2006		



Seismicity Zone: High

## FEMA 154 Rapid Visual Screening Score Card

	Type	Basic Score	Vert Irreg	Plan Irreg	Pre-Code	Post-Bench	Soil C	Soil D	Soil E	RVS Score
Primary	C2	2.8	-1	-0.5	0	0	-0.4	0	0	0.9
Secondary	C1	2.5	-1.5	-0.5	0	0	-0.4	0	0	0.1
Tertiary	RM1	2.8	-1	-0.5	0	0	-0.4	0	0	0.9

Barlow Hall

## Final RVS Score

Final Type

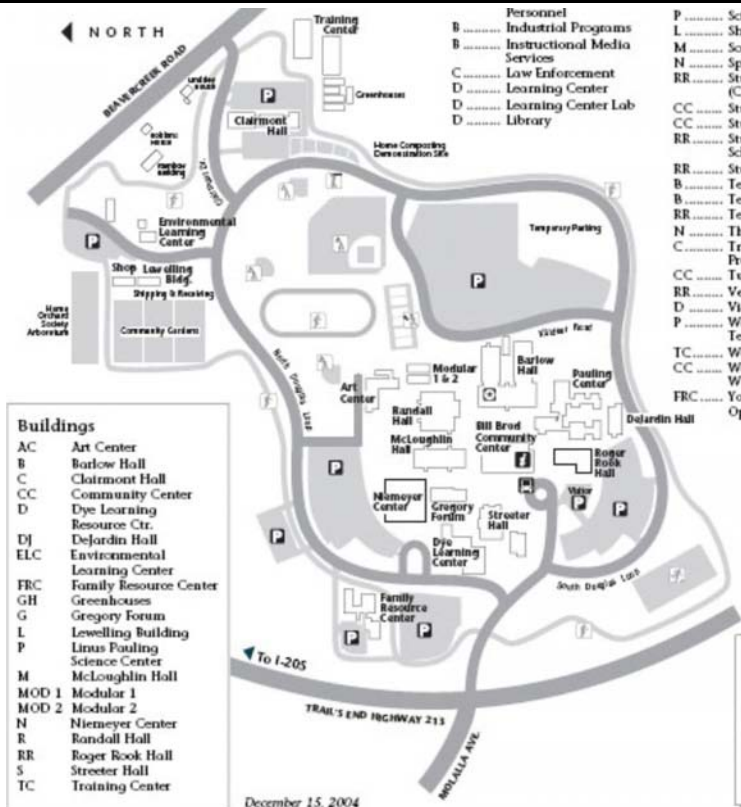
Final Score

C2

0.9

## FEMA-154 Collapse Potential

High (>10%)



OregonGeology

Rapid Visual Screening - Senate Bill #2 - Seismic Needs Assessment  
Oregon Department of Geology and Mineral Industries

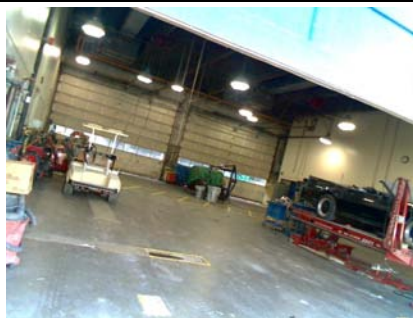
Enrollment	Year Built (Field Verified)	Year Built (Alt. Source)	Est. Decade Built
	1970	1970	1970
Total Area (square ft)	Number of Stories	Basement	Pounding Potential
100819	2	Yes	Yes

Plan Irregularities	Vertical Irregularities
Reentrant Corners: U shaped	Steps in Elevation View: 2 to 3 Changes
None	Internal Discontinuous Diaphragm (large internal opening)
None	Short Columns

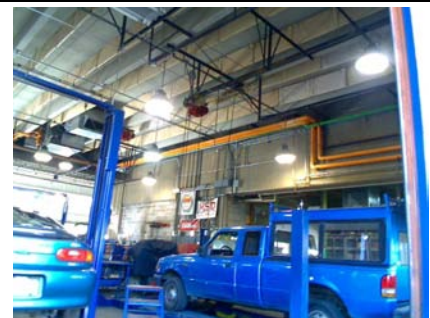
Falling Hazards	Poor Conditions
None	None
None	None
None	None



E Primary Structural Type  
FORM TIES



N Other  
TYP BAY IN S WING



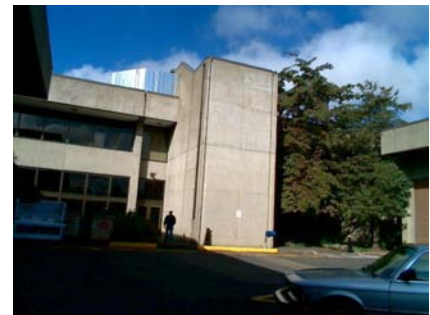
N Secondary Structural Type  
CMU INFILL IN CONN BETWEEN W BAY AND CTR



N Elevation View  
N SIDE OF S WING



N Vertical Irregularity Primary  
CONN OF S WING AND CENTER



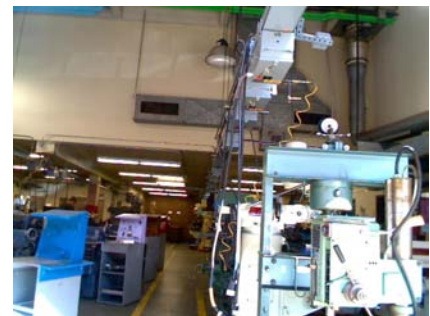
E Number of Stories  
INNER CTR PORTION



S Secondary Structural Type  
S 2 BAYS OF N WING SHOWING INFILL



S Elevation View  
S SIDE OF N WING



S Secondary Structural Type  
BRCK INFILL ON N WALL OF N WING

