

# CCFD Fire Station 16 Hilltop

Clac\_fir36A

Clackamas Co Fire Dist #1

Building Type		County	
Fire - RFPD		Clackamas	
Street			
19340 S Molalla Ave			
City	State	Zip	
Oregon City	OR	97045	
Latitude		Longitude	
45.32682		122.58184	
Tracking Code		Inspection Date	
Hasenberg 02		9/15/2006	



Seismicity Zone: High

## FEMA 154 Rapid Visual Screening Score Card

	Type	Basic Score	Vert Irreg	Plan Irreg	Pre-Code	Post-Bench	Soil C	Soil D	Soil E	RVS Score
Primary	RM1	2.8	0	0	0	0	-0.4	0	0	2.4
Secondary		0	0	0	0	0	0	0	0	0
Tertiary		0	0	0	0	0	0	0	0	0

CCFD Fire Station 16 Hilltop

## Final RVS Score

Final Type

Final Score

RM1

2.4

FEMA-154 Collapse Potential

Low (<1%)



OregonGeology

Rapid Visual Screening - Senate Bill #2 - Seismic Needs Assessment  
Oregon Department of Geology and Mineral Industries

# CCFD Fire Station 16 Hilltop

Clac\_fir36A

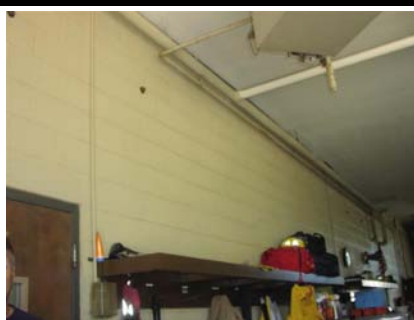
Enrollment	Year Built (Field Verified)	Year Built (Alt. Source)	Est. Decade Built
		1972	
Total Area (square ft)	Number of Stories	Basement	Pounding Potential
8300	1	No	No

Plan Irregularities	Vertical Irregularities

Falling Hazards	Poor Conditions



S General Site



S General Site



S General Site



S General Site



S General Site



S General Site



S General Site



S General Site



S General Site



S General Site

