

# Butte Creek Elementary School

Silver Falls SD 4J

Clac\_sch99A

Building Type	County		
School	Clackamas		
Street			
37569 S Hwy 213			
City	State	Zip	
Mount Angel	OR	97362	
Latitude	Longitude		
45.06341	122.69895		
Tracking Code	Inspection Date		
Previous FEMA-154 Report	9/15/2006		



Seismicity Zone: High

## FEMA 154 Rapid Visual Screening Score Card

	Type	Basic Score	Vert Irreg	Plan Irreg	Pre- Code	Post- Bench	Soil C	Soil D	Soil E	RVS Score
Primary										
Secondary										
Tertiary										

Butte Creek Elementary School

## Final RVS Score

Final Type

Final Score

FEMA-154 Collapse Potential



OregonGeology

Rapid Visual Screening - Senate Bill #2 - Seismic Needs Assessment  
Oregon Department of Geology and Mineral Industries

Enrollment	Year Built (Field Verified)	Year Built (Alt. Source)	Est. Decade Built
303		1949	
Total Area (square ft)	Number of Stories	Basement	Pounding Potential
33752	1	No	No

Plan Irregularities	Vertical Irregularities

Falling Hazards	Poor Conditions



S General Site



S General Site



S General Site



S General Site



S General Site



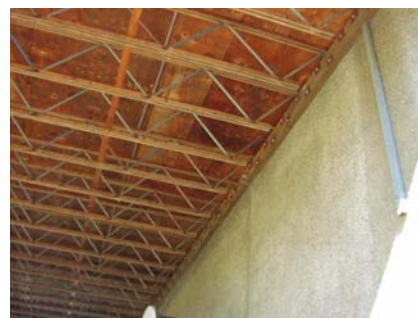
S General Site



S General Site



S General Site



S General Site



S General Site



S General Site



S General Site



S General Site



S General Site



S General Site

