

# Seaside Heights Elementary School

Clat\_sch05A

Seaside SD 10

Building Type		County	
School		Clatsop	
Street			
2000 Spruce St			
City	State	Zip	
Seaside	OR	97138	
Latitude		Longitude	
45.98728		123.90785	
Tracking Code		Inspection Date	
RVS in 2006		9/14/2006	



Seismicity Zone: Very High

## FEMA 154 Rapid Visual Screening Score Card

	Type	Basic Score	Vert Irreg	Plan Irreg	Pre-Code	Post-Bench	Soil C	Soil D	Soil E	RVS Score
Primary	C2	2.8	0	0	0	0	0	0	0	2.8
Secondary		0	0	0	0	0	0	0	0	0
Tertiary		0	0	0	0	0	0	0	0	0

Seaside Heights Elementary School

## Final RVS Score

Final Type

Final Score

C2

2.8

FEMA-154 Collapse Potential

Low (<1%)



OregonGeology

Rapid Visual Screening - Senate Bill #2 - Seismic Needs Assessment  
Oregon Department of Geology and Mineral Industries

# Seaside Heights Elementary School

Clat\_sch05A

Enrollment	Year Built (Field Verified)	Year Built (Alt. Source)	Est. Decade Built
298	1975	1975	1970
Total Area (square ft)	Number of Stories	Basement	Pounding Potential
67200	1	No	No

Plan Irregularities	Vertical Irregularities
None	None
None	None
None	None

Falling Hazards	Poor Conditions
None	Cracks
None	Differential Settlement
None	None



S Poor Condition



E Elevation View



SE Elevation View



NE Elevation View



NE Other



S Other



NW Elevation View



N Elevation View

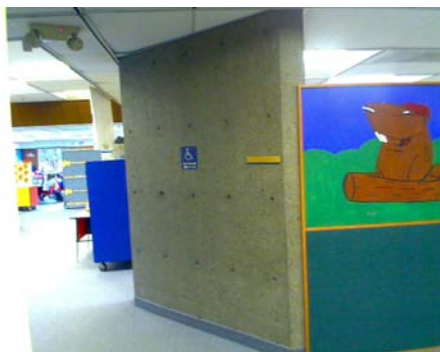


SW Elevation View





SW Elevation View



N Primary Structural Type



E General Site



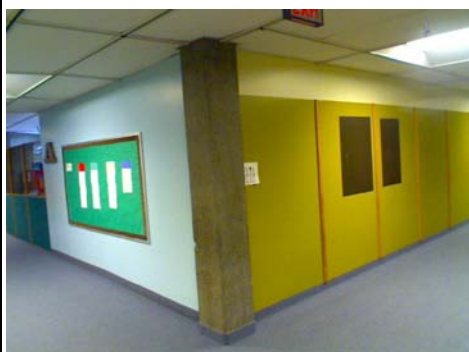
S Primary Structural Type  
concrete walls



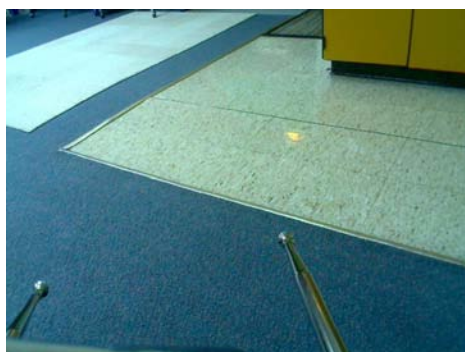
NE Primary Structural Type



NW Primary Structural Type



SW Primary Structural Type



SE Poor Condition  
floor slopes up about 3" in middle.

