

Hilda Lahti Elementary School

Knappa SD 4

Clat_sch10A

Building Type		County	
School		Clatsop	
Street			
41535 Old Hwy 30			
City	State	Zip	
Astoria	OR	97103	
Latitude		Longitude	
46.16292		123.62482	
Tracking Code		Inspection Date	
RVS in 2006		9/19/2006	



Seismicity Zone: High

FEMA 154 Rapid Visual Screening Score Card

	Type	Basic Score	Vert Irreg	Plan Irreg	Pre-Code	Post-Bench	Soil C	Soil D	Soil E	RVS Score
Primary	RM1	2.8	-1	-0.5	0	0	0	-0.6	0	0.7
Secondary		0	0	0	0	0	0	0	0	0
Tertiary		0	0	0	0	0	0	0	0	0

Hilda Lahti Elementary School

Final RVS Score

Final Type

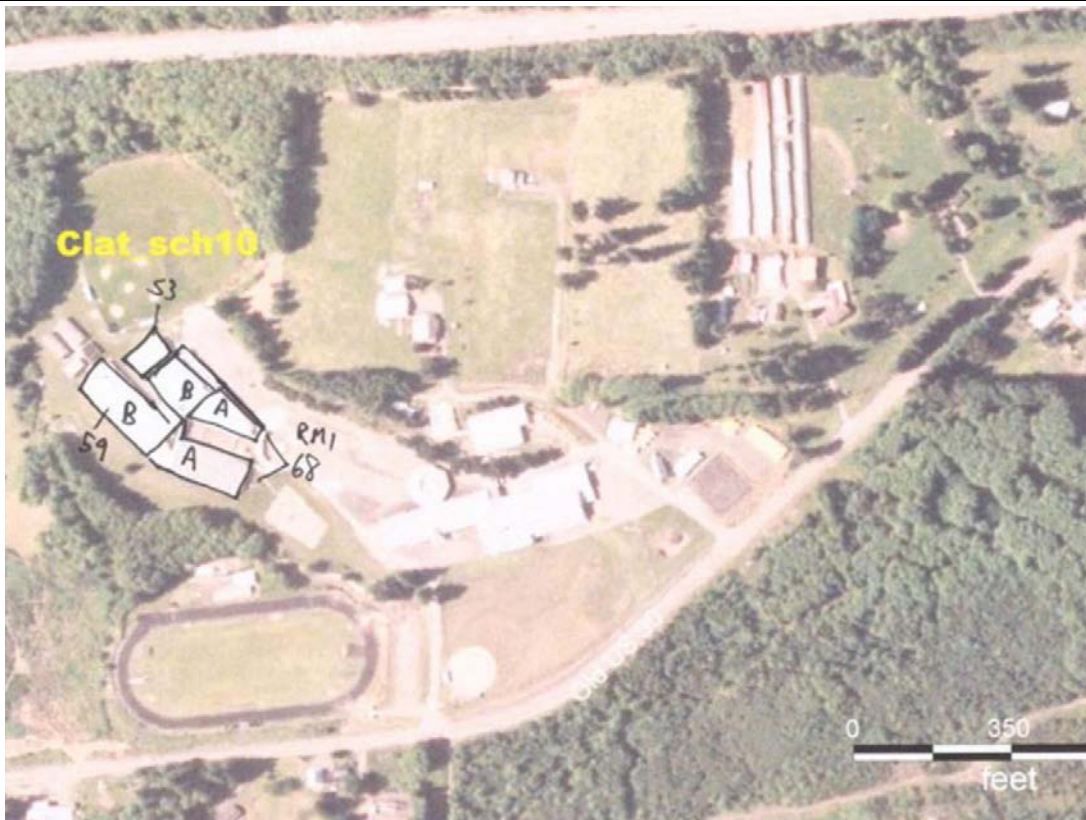
Final Score

RM1

0.7

FEMA-154 Collapse Potential

High (>10%)



OregonGeology

Rapid Visual Screening - Senate Bill #2 - Seismic Needs Assessment
Oregon Department of Geology and Mineral Industries

Hilda Lahti Elementary School

Clat_sch10A

Enrollment	Year Built (Field Verified)	Year Built (Alt. Source)	Est. Decade Built
345	1967	1967	1960
Total Area (square ft)	Number of Stories	Basement	Pounding Potential
50000	1	No	Yes

Plan Irregularities	Vertical Irregularities
Reentrant Corners: Other (Adjacent Build/Entity)	Steps in Elevation View: Single Change (Adjacent Building/Entity)
Torsion: Building Shape	None
None	None

Falling Hazards	Poor Conditions
None	None
None	None
None	None



E Plan Irregularity Secondary



SE Primary Structural Type



N Elevation View



NE Elevation View



SW Elevation View



S General Site



N Field Verified Year Built
1968

Hilda Lahti Elementary School

Knappa SD 4

Clat_sch10B

Building Type		County	
School		Clatsop	
Street			
41535 Old Hwy 30			
City	State	Zip	
Astoria	OR	97103	
Latitude		Longitude	
46.16315		123.62543	
Tracking Code		Inspection Date	
RVS in 2006		9/19/2006	



Seismicity Zone: High

FEMA 154 Rapid Visual Screening Score Card

	Type	Basic Score	Vert Irreg	Plan Irreg	Pre-Code	Post-Bench	Soil C	Soil D	Soil E	RVS Score
Primary	RM1	2.8	-1	-0.5	0	0	0	-0.6	0	0.7
Secondary		0	0	0	0	0	0	0	0	0
Tertiary		0	0	0	0	0	0	0	0	0

Hilda Lahti Elementary School

Final RVS Score

Final Type

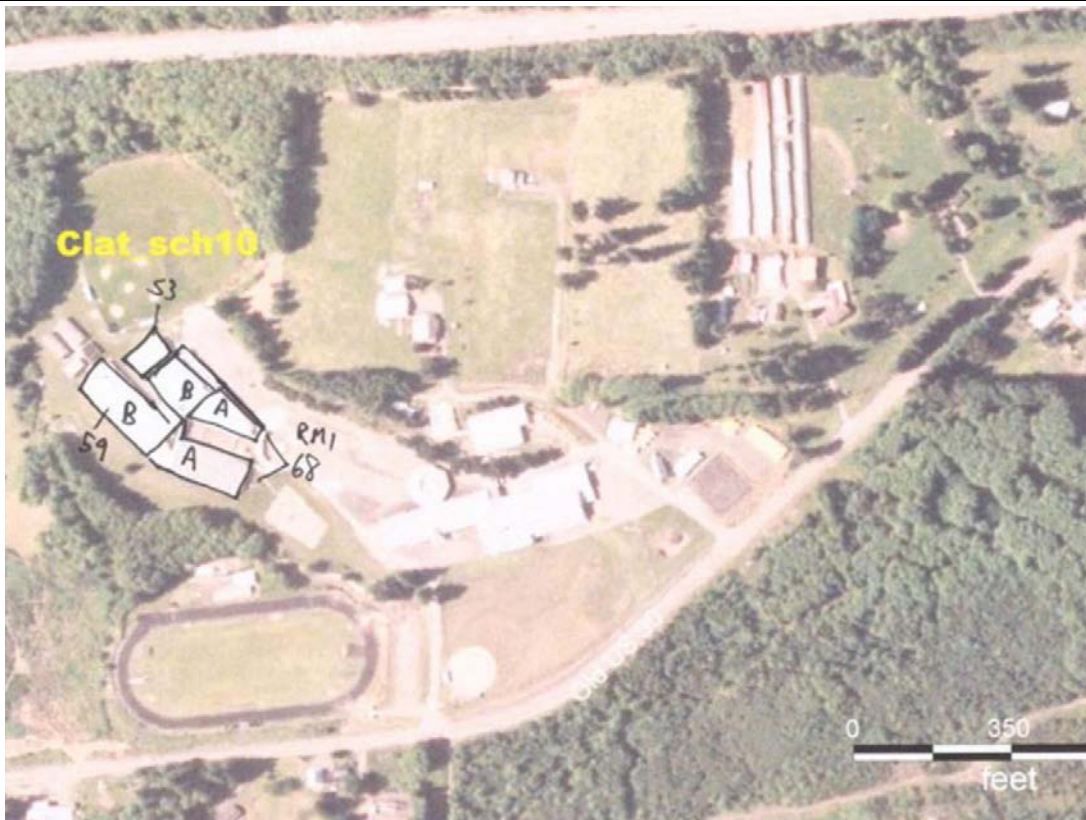
Final Score

RM1

0.7

FEMA-154 Collapse Potential

High (>10%)



OregonGeology

Rapid Visual Screening - Senate Bill #2 - Seismic Needs Assessment
Oregon Department of Geology and Mineral Industries

Enrollment	Year Built (Field Verified)	Year Built (Alt. Source)	Est. Decade Built
345		1967	1950
Total Area (square ft)	Number of Stories	Basement	Pounding Potential
50000	1	No	Yes

Plan Irregularities	Vertical Irregularities
Reentrant Corners: Other (Adjacent Build/Entity)	Steps in Elevation View: 2 to 3 Changes
None	None
None	None

Falling Hazards	Poor Conditions
None	None
None	None
None	None



NW Elevation View

NW Secondary Structural Type
concrete frame, column and beam.

W Elevation View



NW Elevation View



W Elevation View



SW Elevation View

Hilda Lahti Elementary School

Knappa SD 4

Clat_sch10C

Building Type		County	
School		Clatsop	
Street			
41535 Old Hwy 30			
City	State	Zip	
Astoria	OR	97103	
Latitude		Longitude	
46.16315		123.62543	
Tracking Code		Inspection Date	
RVS in 2006		9/19/2006	



Seismicity Zone: High

FEMA 154 Rapid Visual Screening Score Card

	Type	Basic Score	Vert Irreg	Plan Irreg	Pre-Code	Post-Bench	Soil C	Soil D	Soil E	RVS Score
Primary	S3	3.2	0		0	0	0	-0.6	0	2.6
Secondary		0	0	0	0	0	0	0	0	0
Tertiary		0	0	0	0	0	0	0	0	0

Hilda Lahti Elementary School

Final RVS Score

Final Type

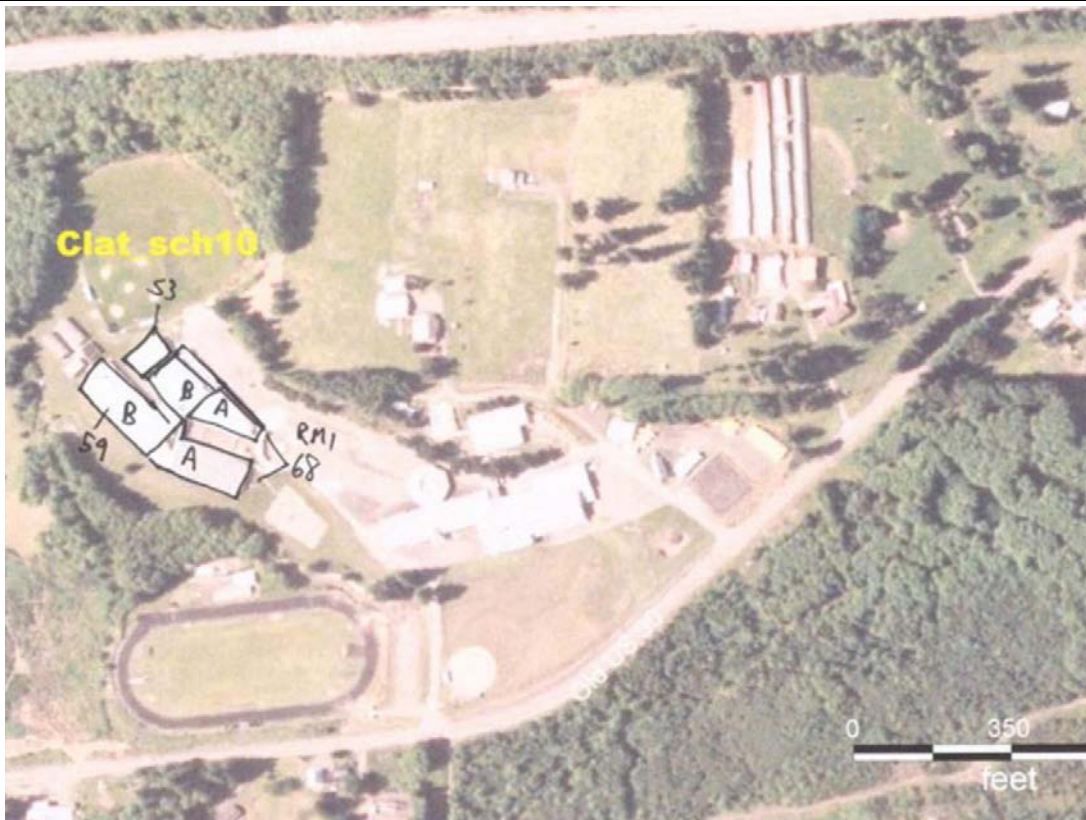
Final Score

S3

2.6

FEMA-154 Collapse Potential

Low (<1%)



OregonGeology

Rapid Visual Screening - Senate Bill #2 - Seismic Needs Assessment
Oregon Department of Geology and Mineral Industries

Enrollment	Year Built (Field Verified)	Year Built (Alt. Source)	Est. Decade Built
345		1967	1980
Total Area (square ft)	Number of Stories	Basement	Pounding Potential
50000	1	No	No

Plan Irregularities	Vertical Irregularities
None	None
None	None
None	None

Falling Hazards	Poor Conditions
None	None
None	None
None	None



S Elevation View



NW Primary Structural Type

