

# Gray Elementary School

Astoria SD 1

Clat\_sch14A

Building Type	County	
School	Clatsop	
Street		
785 Alameda Ave		
City	State	Zip
Astoria	OR	97103
Latitude		Longitude
46.18165		123.85239
Tracking Code		Inspection Date
RVS in 2006		9/13/2006



Seismicity Zone: Very High

## FEMA 154 Rapid Visual Screening Score Card

	Type	Basic Score	Vert Irreg	Plan Irreg	Pre-Code	Post-Bench	Soil C	Soil D	Soil E	RVS Score
Primary	C2	2.8	-1	-0.5	-1	0	0	0	0	0.3
Secondary		0	0	0	0	0	0	0	0	0
Tertiary		0	0	0	0	0	0	0	0	0

Gray Elementary School

## Final RVS Score

Final Type

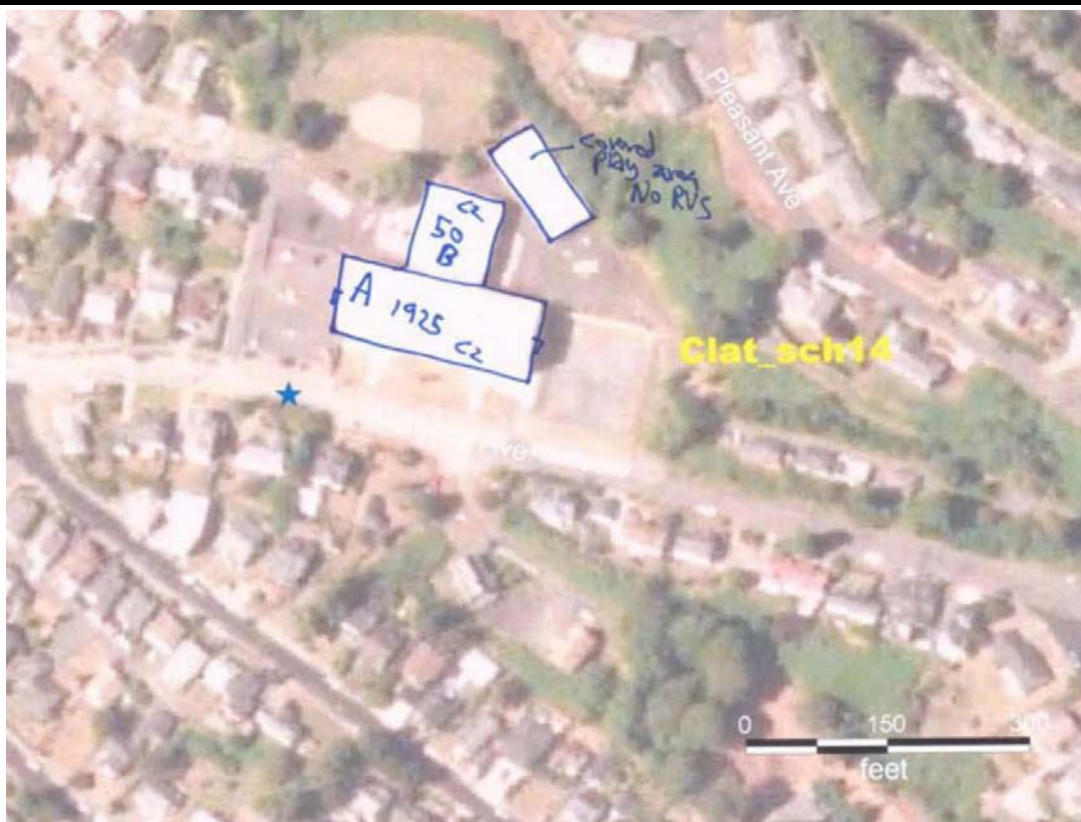
Final Score

C2

0.3

FEMA-154 Collapse Potential

High (>10%)



OregonGeology

Rapid Visual Screening - Senate Bill #2 - Seismic Needs Assessment  
Oregon Department of Geology and Mineral Industries

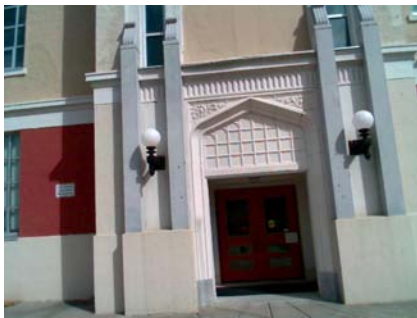
# Gray Elementary School

Clat\_sch14A

Enrollment	Year Built (Field Verified)	Year Built (Alt. Source)	Est. Decade Built
131	1925	1925	1920
Total Area (square ft)	Number of Stories	Basement	Pounding Potential
60500	3	Yes	Yes

Plan Irregularities	Vertical Irregularities
Reentrant Corners:T shaped (Adjacent Build/Entity)	Steps in Elevation View: Single Change (Adjacent Building/Entity)
None	Building On Hill or Sloped Site
None	None

Falling Hazards	Poor Conditions
Parapets: General	None
Other: Ornamental Hazard Over Exit	None
None	None



S Falling Hazard



SE Elevation View



N Pounding Potential



NE Plan Irregularity Primary



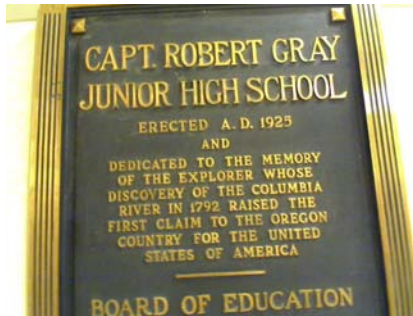
NE Elevation View



W Pounding Potential



NW Elevation View



NW Field Verified Year Built  
1925



# Gray Elementary School

Astoria SD 1

Clat\_sch14B

Building Type		County	
School		Clatsop	
Street			
785 Alameda Ave			
City	State	Zip	
Astoria	OR	97103	
Latitude		Longitude	
46.18188		123.85237	
Tracking Code		Inspection Date	
RVS in 2006		9/13/2006	



Seismicity Zone: Very High

## FEMA 154 Rapid Visual Screening Score Card

	Type	Basic Score	Vert Irreg	Plan Irreg	Pre-Code	Post-Bench	Soil C	Soil D	Soil E	RVS Score
Primary	C2	2.8	-1	-0.5	0	0	0	0	0	1.3
Secondary		0	0	0	0	0	0	0	0	0
Tertiary		0	0	0	0	0	0	0	0	0

Gray Elementary School

## Final RVS Score

Final Type

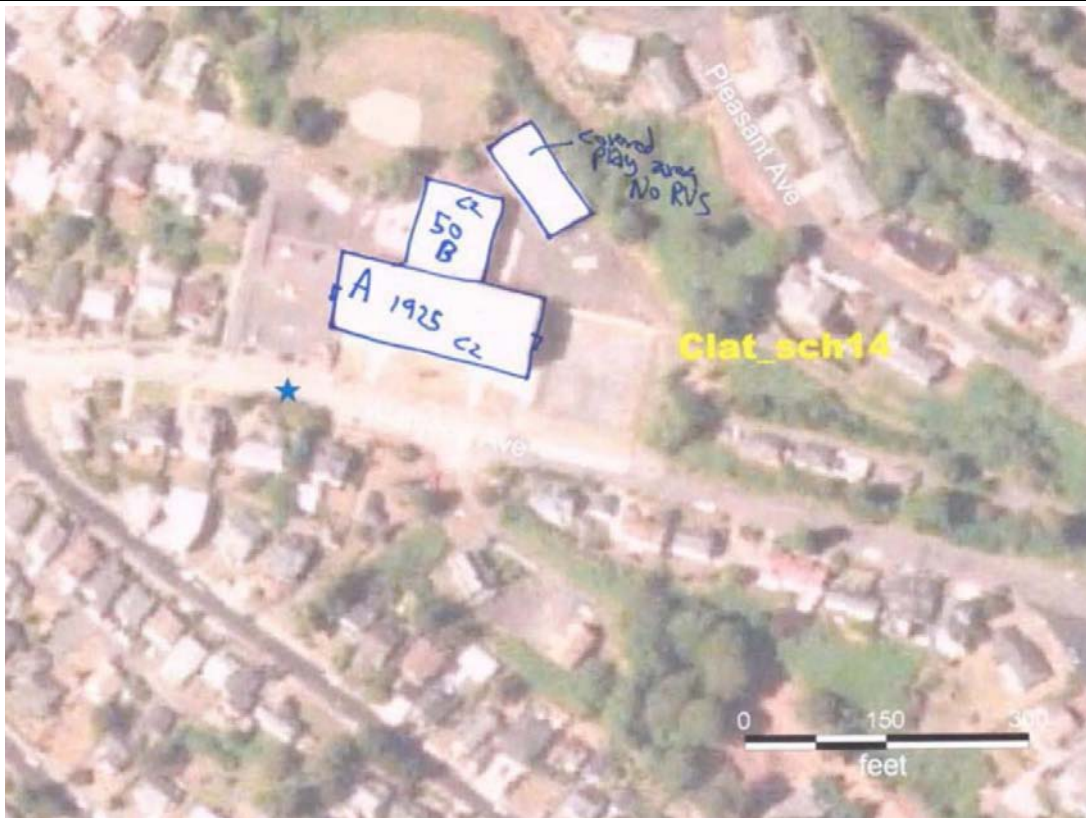
Final Score

C2

1.3

FEMA-154 Collapse Potential

Moderate (>1%)



OregonGeology

Rapid Visual Screening - Senate Bill #2 - Seismic Needs Assessment  
Oregon Department of Geology and Mineral Industries

Enrollment	Year Built (Field Verified)	Year Built (Alt. Source)	Est. Decade Built
131		1925	1950
Total Area (square ft)	Number of Stories	Basement	Pounding Potential
60500	1	No	Yes

Plan Irregularities	Vertical Irregularities
Reentrant Corners:T shaped (Adjacent Build/Entity)	Steps in Elevation View: Single Change (Adjacent Building/Entity)
None	None
None	None

Falling Hazards	Poor Conditions
None	None
None	None
None	None



W Elevation View



SW Elevation View



SE Seismic Upgrade