

# Jewell School

Jewell SD 8

Clat\_sch15A

Building Type		County	
School		Clatsop	
Street			
83874 Highway 103			
City	State	Zip	
Seaside	OR	97138	
Latitude		Longitude	
45.92928		123.49848	
Tracking Code		Inspection Date	
RVS in 2006		9/19/2006	



Seismicity Zone: High

## FEMA 154 Rapid Visual Screening Score Card

	Type	Basic Score	Vert Irreg	Plan Irreg	Pre-Code	Post-Bench	Soil C	Soil D	Soil E	RVS Score
Primary	RM1	2.8	-1	-0.5	0	0	0	-0.6	0	0.7
Secondary		0	0	0	0	0	0	0	0	0
Tertiary		0	0	0	0	0	0	0	0	0

Jewell School

## Final RVS Score

Final Type

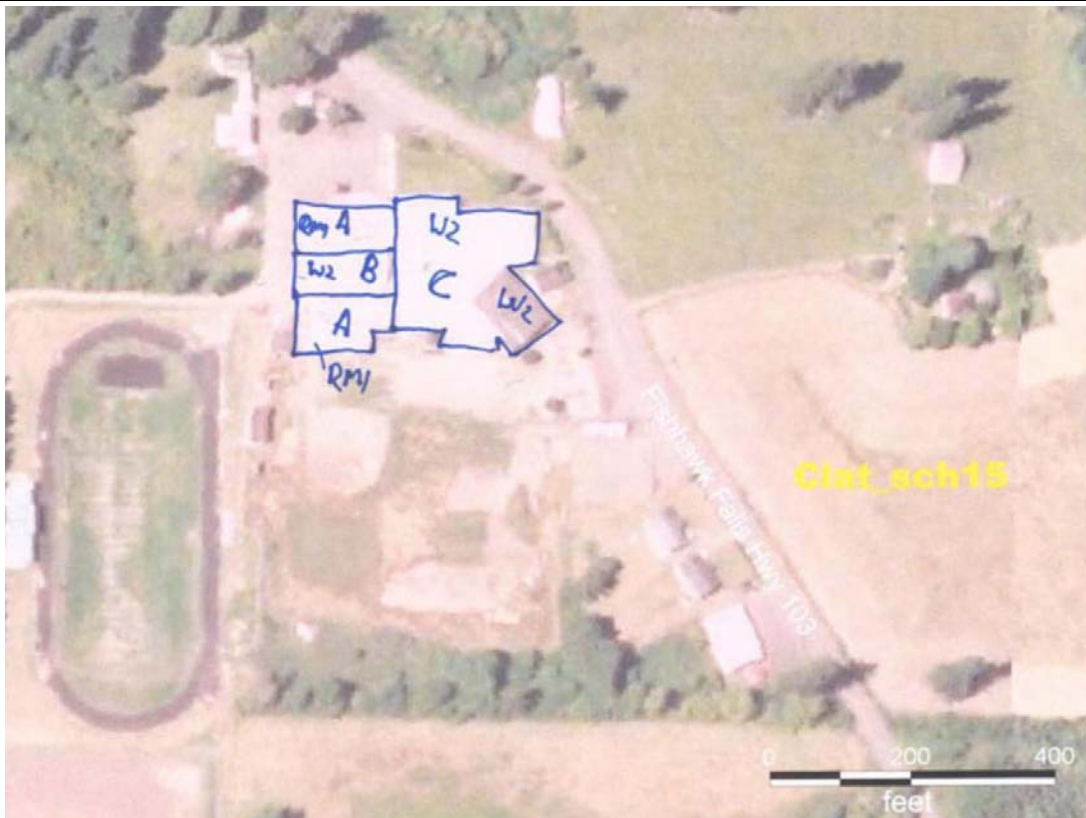
Final Score

RM1

0.7

## FEMA-154 Collapse Potential

High (>10%)



OregonGeology

Rapid Visual Screening - Senate Bill #2 - Seismic Needs Assessment  
Oregon Department of Geology and Mineral Industries

Enrollment	Year Built (Field Verified)	Year Built (Alt. Source)	Est. Decade Built
190		1974	1970
Total Area (square ft)	Number of Stories	Basement	Pounding Potential
15000	1	No	Yes

Plan Irregularities	Vertical Irregularities
Reentrant Corners: Other (Adjacent Build/Entity)	Steps in Elevation View: 2 to 3 Changes
Reentrant Corners: Other	Steps in Elevation View: 2 to 3 Changes (Adjacent Building/Entity)
None	None

Falling Hazards	Poor Conditions
None	None
None	None
None	None



N Elevation View



E Primary Structural Type



W Elevation View



SW Elevation View



S Elevation View



E Plan Irregularity Secondary

# Jewell School

Jewell SD 8

Clat\_sch15B

Building Type		County	
School		Clatsop	
Street			
83874 Highway 103			
City	State	Zip	
Seaside	OR	97138	
Latitude		Longitude	
45.92948		123.49844	
Tracking Code		Inspection Date	
RVS in 2006		9/19/2006	



Seismicity Zone: High

## FEMA 154 Rapid Visual Screening Score Card

	Type	Basic Score	Vert Irreg	Plan Irreg	Pre-Code	Post-Bench	Soil C	Soil D	Soil E	RVS Score
Primary	W2	3.8	-2	-0.5	0	0	0	-0.8	0	0.5
Secondary		0	0	0	0	0	0	0	0	0
Tertiary		0	0	0	0	0	0	0	0	0

Jewell School

## Final RVS Score

Final Type

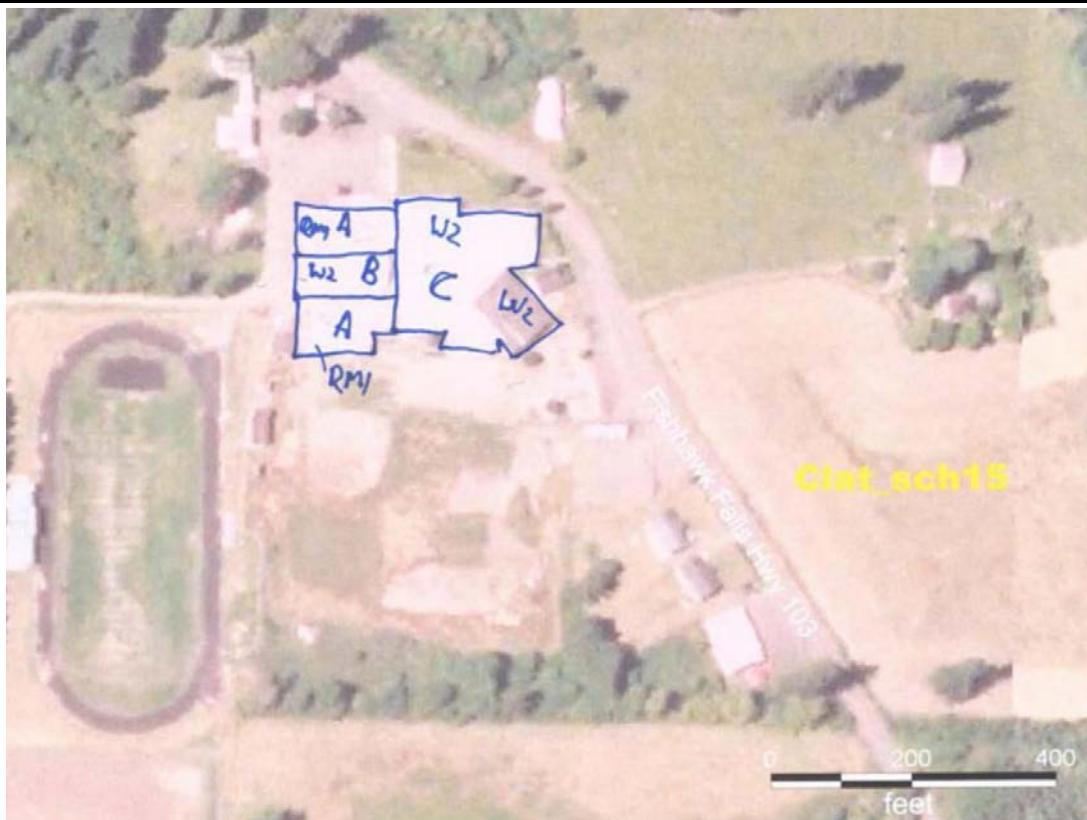
Final Score

W2

0.5

## FEMA-154 Collapse Potential

High (>10%)



OregonGeology

Rapid Visual Screening - Senate Bill #2 - Seismic Needs Assessment  
Oregon Department of Geology and Mineral Industries

Enrollment	Year Built (Field Verified)	Year Built (Alt. Source)	Est. Decade Built
190		1974	1960
Total Area (square ft)	Number of Stories	Basement	Pounding Potential
15000	1	No	Yes

Plan Irregularities	Vertical Irregularities
Reentrant Corners: Other (Adjacent Build/Entity)	Steps in Elevation View: 2 to 3 Changes (Adjacent Building/Entity)
None	None
None	None

Falling Hazards	Poor Conditions
None	None
None	None
None	None



W Elevation View





# Jewell School

Jewell SD 8

Clat\_sch15C

Building Type		County	
School		Clatsop	
Street			
83874 Highway 103			
City	State	Zip	
Seaside	OR	97138	
Latitude		Longitude	
45.92951		123.49785	
Tracking Code		Inspection Date	
RVS in 2006		9/19/2006	



Seismicity Zone: High

## FEMA 154 Rapid Visual Screening Score Card

	Type	Basic Score	Vert Irreg	Plan Irreg	Pre-Code	Post-Bench	Soil C	Soil D	Soil E	RVS Score
Primary	W2	3.8	-2	-0.5	0	2.4	0	-0.8	0	2.9
Secondary		0	0	0	0	0	0	0	0	0
Tertiary		0	0	0	0	0	0	0	0	0

Jewell School

## Final RVS Score

Final Type

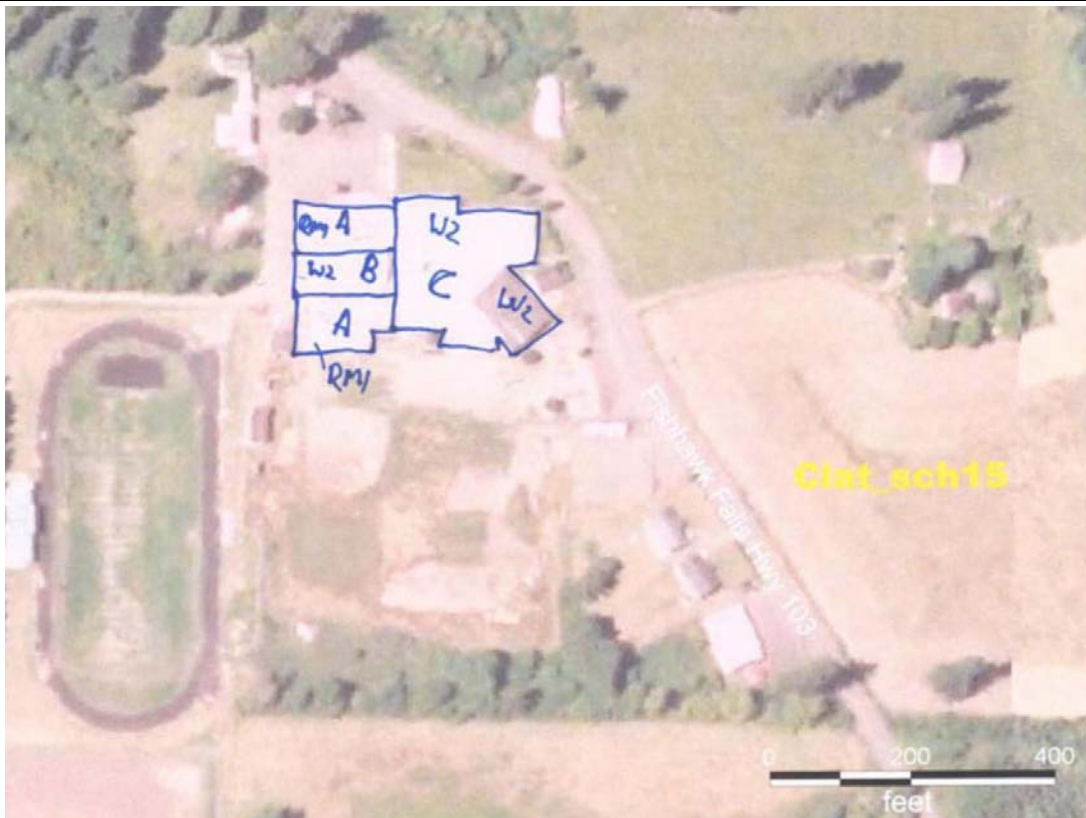
Final Score

W2

2.9

## FEMA-154 Collapse Potential

Low (<1%)



OregonGeology

Rapid Visual Screening - Senate Bill #2 - Seismic Needs Assessment  
Oregon Department of Geology and Mineral Industries

Enrollment	Year Built (Field Verified)	Year Built (Alt. Source)	Est. Decade Built
190		1974	1980
Total Area (square ft)	Number of Stories	Basement	Pounding Potential
15000	1	No	Yes

Plan Irregularities	Vertical Irregularities
Reentrant Corners: Other	Steps in Elevation View: 2 to 3 Changes
Reentrant Corners: Other (Adjacent Build/Entity)	Steps in Elevation View: 2 to 3 Changes (Adjacent Building/Entity)
None	None

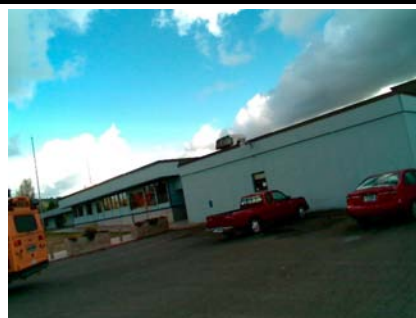
Falling Hazards	Poor Conditions
None	None
None	None
None	None



NE Elevation View



NE Plan Irregularity Primary



NW General Site

