

# Ocean Crest Elementary School

Coos\_sch13A

Bandon SD 54

Building Type		County	
School		Coos	
Street			
1040 SW Allegany Ave			
City	State	Zip	
Bandon	OR	97411	
Latitude		Longitude	
43.11389		124.41648	
Tracking Code		Inspection Date	
RVS in 2006		8/10/2006	



Seismicity Zone: Very High

## FEMA 154 Rapid Visual Screening Score Card

	Type	Basic Score	Vert Irreg	Plan Irreg	Pre-Code	Post-Bench	Soil C	Soil D	Soil E	RVS Score
Primary	W2	3.8	-2	-0.5	-1	0	0	-0.8	0	-0.5
Secondary		0	0	0	0	0	0	0	0	0
Tertiary		0	0	0	0	0	0	0	0	0

Ocean Crest Elementary School

## Final RVS Score

Final Type

Final Score

W2

-0.5

FEMA-154 Collapse Potential

Very High (100%)



OregonGeology

Rapid Visual Screening - Senate Bill #2 - Seismic Needs Assessment  
Oregon Department of Geology and Mineral Industries

Enrollment	Year Built (Field Verified)	Year Built (Alt. Source)	Est. Decade Built
236		1939	1930
Total Area (square ft)	Number of Stories	Basement	Pounding Potential
36309	1	Yes	No

Plan Irregularities	Vertical Irregularities
Reentrant Corners: Other	Steps in Elevation View: Single Change
Out of Plane Lateral-Force-Resistance Elements	Steps in Elevation View: Single Change (Adjacent Building/Entity)
Reentrant Corners: Other	None

Falling Hazards	Poor Conditions
Unreinforced Chimneys	None
None	None
None	None



SW Plan Irregularity Primary



W Plan Irregularity Tertiary



E General Site



N Plan Irregularity Tertiary



SW Vertical Irregularity Primary



S Falling Hazard



S Basement



W Vertical Irregularity Secondary

# Ocean Crest Elementary School

Coos\_sch13B

Bandon SD 54

Building Type		County	
School		Coos	
Street			
1040 SW Allegany Ave			
City	State	Zip	
Bandon	OR	97411	
Latitude		Longitude	
43.11437		124.41666	
Tracking Code		Inspection Date	
RVS in 2006		8/10/2006	



Seismicity Zone: Very High

## FEMA 154 Rapid Visual Screening Score Card

	Type	Basic Score	Vert Irreg	Plan Irreg	Pre-Code	Post-Bench	Soil C	Soil D	Soil E	RVS Score
Primary	W2	3.8	-2	-0.5	0	0	0	-0.8	0	0.5
Secondary		0	0	0	0	0	0	0	0	0
Tertiary		0	0	0	0	0	0	0	0	0

Ocean Crest Elementary School

## Final RVS Score

Final Type

Final Score

W2

0.5

FEMA-154 Collapse Potential

High (>10%)



OregonGeology

Rapid Visual Screening - Senate Bill #2 - Seismic Needs Assessment  
Oregon Department of Geology and Mineral Industries



Enrollment	Year Built (Field Verified)	Year Built (Alt. Source)	Est. Decade Built
236		1939	1970
Total Area (square ft)	Number of Stories	Basement	Pounding Potential
36309	1	No	No

Plan Irregularities	Vertical Irregularities
Reentrant Corners: Other (Adjacent Build/Entity)	Steps in Elevation View: Single Change (Adjacent Building/Entity)
Out of Plane Lateral-Force-Resistance Elements	None
None	None

Falling Hazards	Poor Conditions
None	None
None	None
None	None



NE General Site



W Vertical Irregularity Primary



S Plan Irregularity Primary

# Ocean Crest Elementary School

Coos\_sch13C

Bandon SD 54

Building Type		County	
School		Coos	
Street			
1040 SW Allegany Ave			
City	State	Zip	
Bandon	OR	97411	
Latitude		Longitude	
43.11363		124.41684	
Tracking Code		Inspection Date	
RVS in 2006		8/10/2006	



Seismicity Zone: Very High

## FEMA 154 Rapid Visual Screening Score Card

	Type	Basic Score	Vert Irreg	Plan Irreg	Pre-Code	Post-Bench	Soil C	Soil D	Soil E	RVS Score
Primary	W1	4.4	0	0	0	2.4	0	0	0	6.8
Secondary		0	0	0	0	0	0	0	0	0
Tertiary		0	0	0	0	0	0	0	0	0

Ocean Crest Elementary School

## Final RVS Score

Final Type

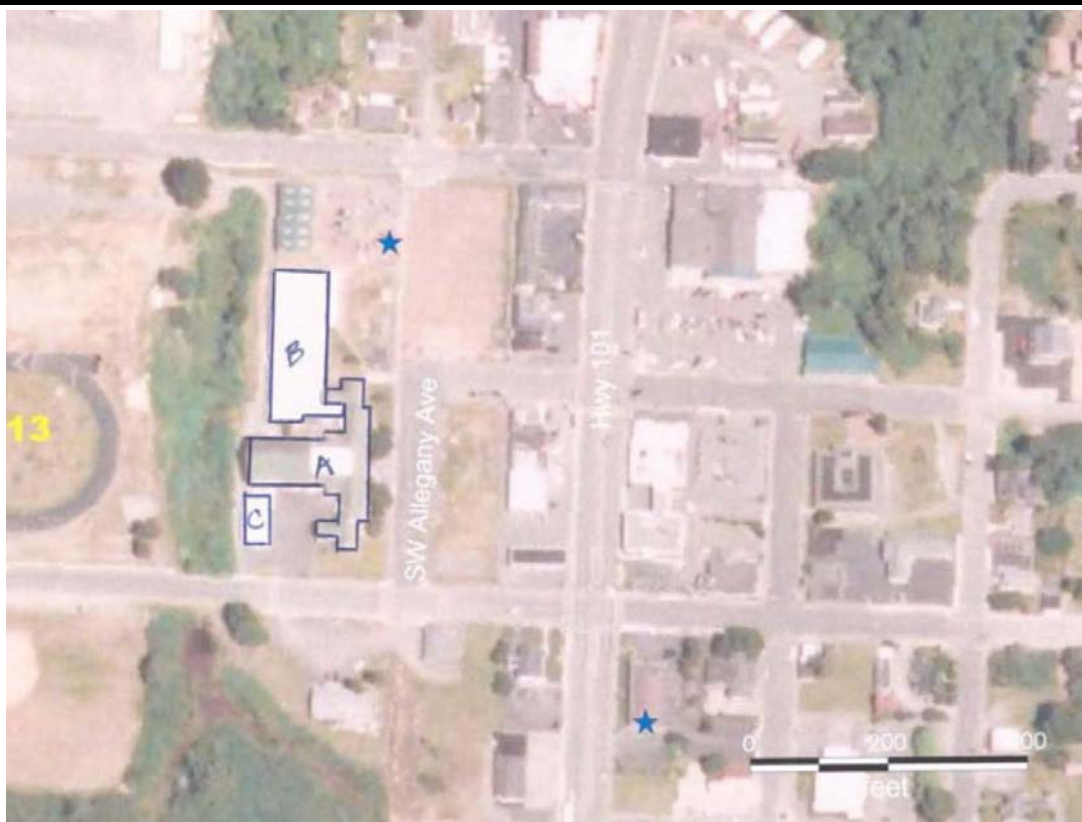
Final Score

W1

6.8

FEMA-154 Collapse Potential

Low (<1%)



OregonGeology

Rapid Visual Screening - Senate Bill #2 - Seismic Needs Assessment  
Oregon Department of Geology and Mineral Industries

Enrollment	Year Built (Field Verified)	Year Built (Alt. Source)	Est. Decade Built
236		1939	1980
Total Area (square ft)	Number of Stories	Basement	Pounding Potential
36309	1	No	No

Plan Irregularities	Vertical Irregularities
None	None
None	None
None	None

Falling Hazards	Poor Conditions
None	None
None	None
None	None

