

Crook County SD

OCHO OCHO  
ELEMENTARY SCHOOL  
OPENING SCHOOL

DIRECTOR  
LAWRENCE E. COLES  
CHAIRMAN  
ARTHUR M. LERIGSON  
VICE CHAIRMAN  
DISTRICT BOARDERS  
ERNEST MOORE  
GIL WILL

R. H. M. 1928  
PRINCIPAL  
OCHO, M. 1944  
SUPERINTENDENT  
PROFESSOR, H. 1943 & 1944  
VIRGINIA

1943 1944

Ochoco Elementary School	
Final RVS Score	
Final Type	Final Score
C2	0.4
FEMA-154 Collapse Potential	
High (>10%)	



Enrollment	Year Built (Field Verified)	Year Built (Alt. Source)	Est. Decade Built
413	1945	1945	1940
Total Area (square ft)	Number of Stories	Basement	Pounding Potential
39694	1	No	No

Plan Irregularities	Vertical Irregularities
None	Steps in Elevation View: Single Change
None	Steps in Elevation View: Single Change (Adjacent Building/Entity)
None	None

Falling Hazards	Poor Conditions
None	None
None	None
None	None



S Elevation View



SE Vertical Irregularity Primary



SE Vertical Irregularity Secondary

# Ochoco Elementary School

Croo\_sch04B

Crook County SD

Building Type		County	
School		Crook	
Street			
440 NW Madras Hwy			
City	State	Zip	
Prineville	OR	97754	
Latitude		Longitude	
44.30449		120.85873	
Tracking Code		Inspection Date	
RVS in 2006		7/6/2006	



Seismicity Zone: Moderate

## FEMA 154 Rapid Visual Screening Score Card

	Type	Basic Score	Vert Irreg	Plan Irreg	Pre-Code	Post-Bench	Soil C	Soil D	Soil E	RVS Score
Primary	RM1	3.6	-2	-0.5	0	0	0	-1.2	0	-0.1
Secondary	C2	3.6	-2	-0.5	0	0	0	-1.2	0	-0.1
Tertiary		0	0	0	0	0	0	0	0	0

Ochoco Elementary School

## Final RVS Score

Final Type

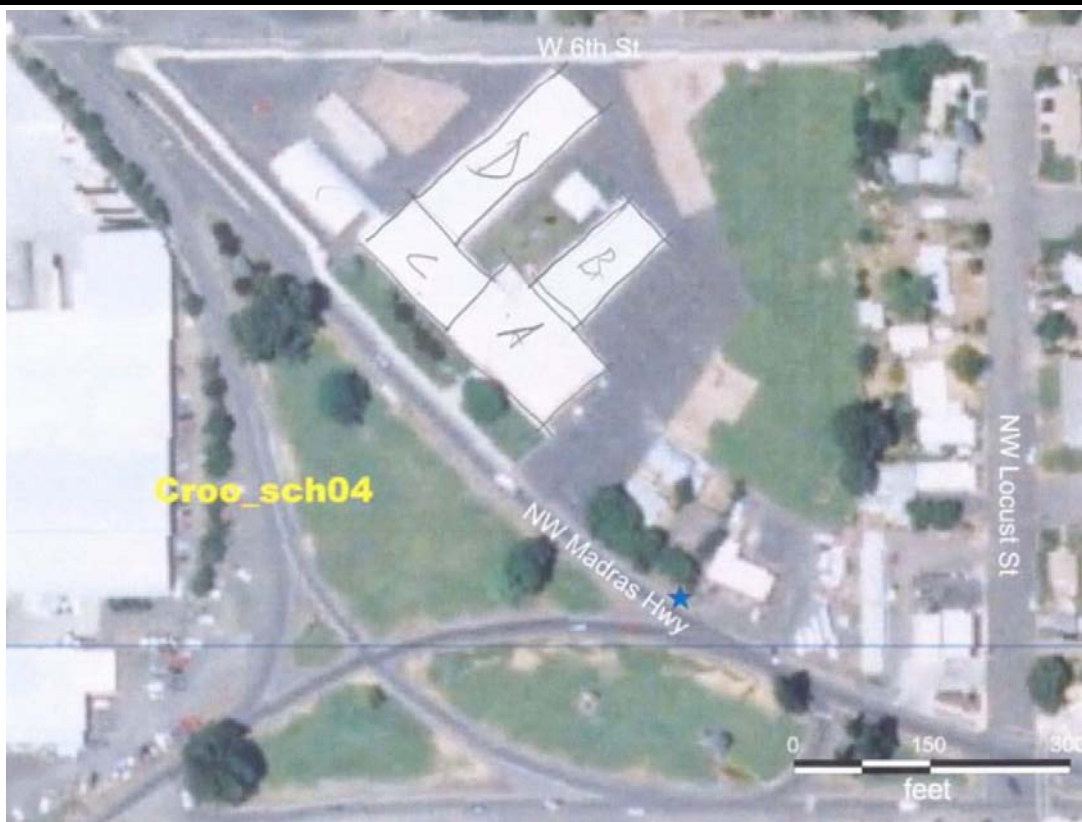
Final Score

RM1

-0.1

FEMA-154 Collapse Potential

Very High (100%)



OregonGeology

Rapid Visual Screening - Senate Bill #2 - Seismic Needs Assessment  
Oregon Department of Geology and Mineral Industries

Enrollment	Year Built (Field Verified)	Year Built (Alt. Source)	Est. Decade Built
413		1945	1950
Total Area (square ft)	Number of Stories	Basement	Pounding Potential
39694	1	No	No

Plan Irregularities	Vertical Irregularities
Reentrant Corners:T shaped (Adjacent Build/Entity)	Steps in Elevation View: Single Change (Adjacent Building/Entity)
None	None
None	None

Falling Hazards	Poor Conditions
None	None
None	None
None	None



NW Plan Irregularity Primary





# Ochoco Elementary School

Crook County SD

Croo\_sch04C

Building Type		County	
School		Crook	
Street			
440 NW Madras Hwy			
City	State	Zip	
Prineville	OR	97754	
Latitude		Longitude	
44.30448		120.85945	
Tracking Code		Inspection Date	
RVS in 2006		7/6/2006	



Seismicity Zone: Moderate

## FEMA 154 Rapid Visual Screening Score Card

	Type	Basic Score	Vert Irreg	Plan Irreg	Pre-Code	Post-Bench	Soil C	Soil D	Soil E	RVS Score
Primary	RM1	3.6	-2	-0.5	0	0	0	-1.2	0	-0.1
Secondary	C2	3.6	-2	-0.5	0	0	0	-1.2	0	-0.1
Tertiary		0	0	0	0	0	0	0	0	0

Ochoco Elementary School

## Final RVS Score

Final Type

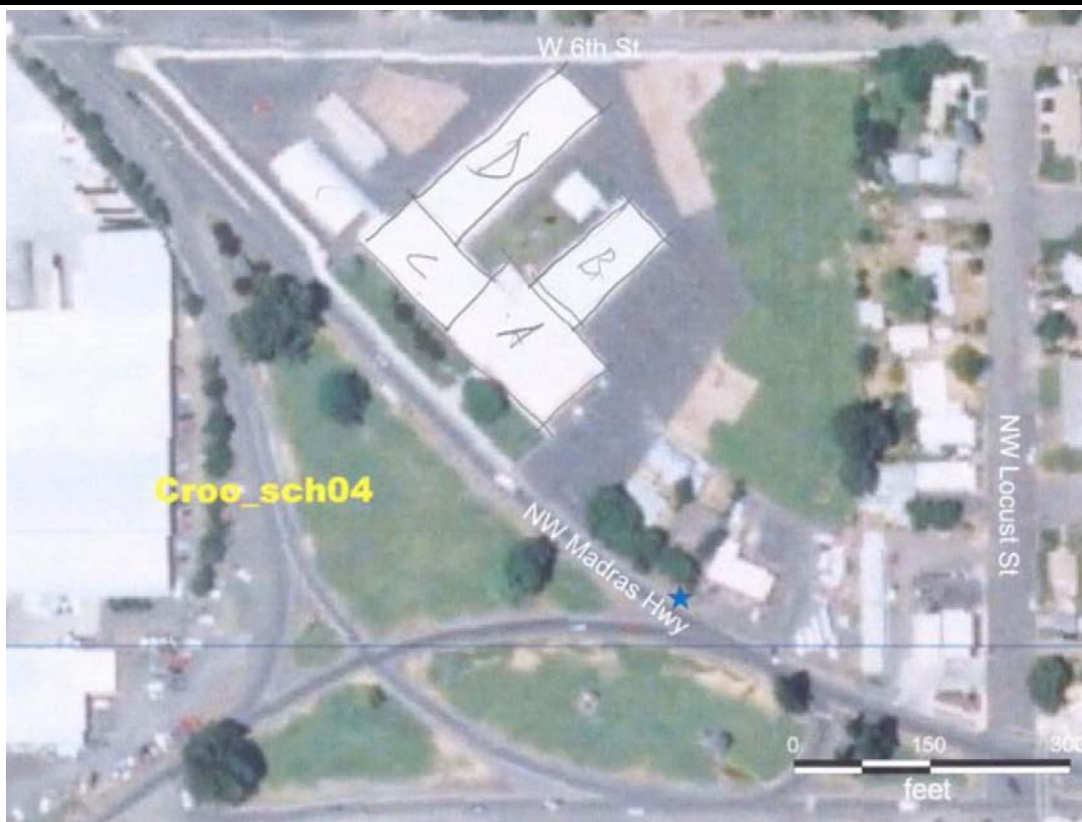
Final Score

RM1

-0.1

FEMA-154 Collapse Potential

Very High (100%)



OregonGeology

Rapid Visual Screening - Senate Bill #2 - Seismic Needs Assessment  
Oregon Department of Geology and Mineral Industries

Enrollment	Year Built (Field Verified)	Year Built (Alt. Source)	Est. Decade Built
413		1945	1960
Total Area (square ft)	Number of Stories	Basement	Pounding Potential
39694	1	No	No

Plan Irregularities	Vertical Irregularities
Reentrant Corners: Other (Adjacent Build/Entity)	Steps in Elevation View: Single Change (Adjacent Building/Entity)
None	None
None	None

Falling Hazards	Poor Conditions
None	None
None	None
None	None



SW Elevation View

# Ochoco Elementary School

Crook County SD

Croo\_sch04D

Building Type		County	
School		Crook	
Street			
440 NW Madras Hwy			
City	State	Zip	
Prineville	OR	97754	
Latitude		Longitude	
44.30478		120.85918	
Tracking Code		Inspection Date	
RVS in 2006		7/6/2006	



Seismicity Zone: Moderate

## FEMA 154 Rapid Visual Screening Score Card

	Type	Basic Score	Vert Irreg	Plan Irreg	Pre-Code	Post-Bench	Soil C	Soil D	Soil E	RVS Score
Primary	W2	4.8	0	-0.5	0	0	0	-1.2	0	3.1
Secondary	RM1	3.6	0	-0.5	0	0	0	-1.2	0	1.9
Tertiary		0	0	0	0	0	0	0	0	0

Ochoco Elementary School

## Final RVS Score

Final Type

Final Score

RM1

1.9

FEMA-154 Collapse Potential

Moderate (>1%)



OregonGeology

Rapid Visual Screening - Senate Bill #2 - Seismic Needs Assessment  
Oregon Department of Geology and Mineral Industries

# Ochoco Elementary School

Croo\_sch04D

Enrollment	Year Built (Field Verified)	Year Built (Alt. Source)	Est. Decade Built
413		1945	1970
Total Area (square ft)	Number of Stories	Basement	Pounding Potential
39694	1	No	No

Plan Irregularities	Vertical Irregularities
Reentrant Corners:L shaped (Adjacent Build/Entity)	None
None	None
None	None

Falling Hazards	Poor Conditions
None	None
None	None
None	None



N Plan Irregularity Secondary



NW Elevation View