

Gold Beach High School

Central Curry SD 1

Curr_sch04A

Building Type		County	
School		Curry	
Street			
29516 Ellensburg Ave			
City	State	Zip	
Gold Beach	OR	97444	
Latitude		Longitude	
42.40817		124.42165	
Tracking Code		Inspection Date	
RVS in 2006		8/4/2006	



Seismicity Zone: Very High

FEMA 154 Rapid Visual Screening Score Card

	Type	Basic Score	Vert Irreg	Plan Irreg	Pre-Code	Post-Bench	Soil C	Soil D	Soil E	RVS Score
Primary	W2	3.8	-2	-0.5	0	0	0	-0.8	0	0.5
Secondary	C2	2.8	-1	-0.5	0	0	0	-0.6	0	0.7
Tertiary		0	0	0	0	0	0	0	0	0

Gold Beach High School

Final RVS Score

Final Type

Final Score

W2

0.5

FEMA-154 Collapse Potential

High (>10%)



OregonGeology

Rapid Visual Screening - Senate Bill #2 - Seismic Needs Assessment
Oregon Department of Geology and Mineral Industries

Enrollment	Year Built (Field Verified)	Year Built (Alt. Source)	Est. Decade Built
244		1927	1970
Total Area (square ft)	Number of Stories	Basement	Pounding Potential
93110	1	No	No

Plan Irregularities	Vertical Irregularities
Reentrant Corners: Other	Steps in Elevation View: Very Irregular Changes
Out of Plane Lateral-Force-Resistance Elements	None
None	None

Falling Hazards	Poor Conditions
Unreinforced Chimneys	None
None	None
None	None



E Vertical Irregularity Primary



E Plan Irregularity Secondary



S Secondary Structural Type

W Plan Irregularity Primary
primary structural typeW Falling Hazard
original 1920's bldg at north end of "A"

Gold Beach High School

Central Curry SD 1

Curr_sch04B

Building Type		County	
School		Curry	
Street			
29516 Ellensburg Ave			
City	State	Zip	
Gold Beach	OR	97444	
Latitude		Longitude	
42.40865		124.42222	
Tracking Code		Inspection Date	
RVS in 2006		8/4/2006	



Seismicity Zone: Very High

FEMA 154 Rapid Visual Screening Score Card

	Type	Basic Score	Vert Irreg	Plan Irreg	Pre-Code	Post-Bench	Soil C	Soil D	Soil E	RVS Score
Primary	S3	3.2	0	-0.5	0	0	0	-0.6	0	2.1
Secondary		0	0	0	0	0	0	0	0	0
Tertiary		0	0	0	0	0	0	0	0	0

Gold Beach High School

Final RVS Score

Final Type

Final Score

S3

2.1

FEMA-154 Collapse Potential

Low (<1%)



OregonGeology

Rapid Visual Screening - Senate Bill #2 - Seismic Needs Assessment
Oregon Department of Geology and Mineral Industries

Enrollment	Year Built (Field Verified)	Year Built (Alt. Source)	Est. Decade Built
244		1927	1980
Total Area (square ft)	Number of Stories	Basement	Pounding Potential
93110	2	No	No

Plan Irregularities	Vertical Irregularities
Reentrant Corners: Other	Steps in Elevation View: 2 to 3 Changes
Out of Plane Lateral-Force-Resistance Elements	None
None	None

Falling Hazards	Poor Conditions
None	None
None	None
None	None



NW Vertical Irregularity Primary



SW Plan Irregularity Primary



Gold Beach High School

Central Curry SD 1

Curr_sch04C

Building Type		County	
School		Curry	
Street			
29516 Ellensburg Ave			
City	State	Zip	
Gold Beach	OR	97444	
Latitude		Longitude	
42.4084		124.42224	
Tracking Code		Inspection Date	
RVS in 2006		8/4/2006	



Seismicity Zone: Very High

FEMA 154 Rapid Visual Screening Score Card

	Type	Basic Score	Vert Irreg	Plan Irreg	Pre-Code	Post-Bench	Soil C	Soil D	Soil E	RVS Score
Primary	W1	4.4	-2.5	0	0	0	0	0	0	1.9
Secondary		0	0	0	0	0	0	0	0	0
Tertiary		0	0	0	0	0	0	0	0	0

Gold Beach High School

Final RVS Score

Final Type

Final Score

W1

1.9

FEMA-154 Collapse Potential

Moderate (>1%)



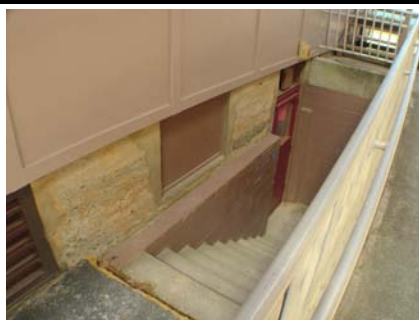
OregonGeology

Rapid Visual Screening - Senate Bill #2 - Seismic Needs Assessment
Oregon Department of Geology and Mineral Industries

Enrollment	Year Built (Field Verified)	Year Built (Alt. Source)	Est. Decade Built
244		1927	1970
Total Area (square ft)	Number of Stories	Basement	Pounding Potential
93110	2	No	No

Plan Irregularities	Vertical Irregularities
None	Building On Hill or Sloped Site
None	None
None	None

Falling Hazards	Poor Conditions
None	None
None	None
None	None



N Vertical Irregularity Primary
First floor



NW Vertical Irregularity Primary

Gold Beach High School

Central Curry SD 1

Curr_sch04D

Building Type		County	
School		Curry	
Street			
29516 Ellensburg Ave			
City	State	Zip	
Gold Beach	OR	97444	
Latitude		Longitude	
42.40819		124.42218	
Tracking Code		Inspection Date	
RVS in 2006		8/4/2006	



Seismicity Zone: Very High

FEMA 154 Rapid Visual Screening Score Card

	Type	Basic Score	Vert Irreg	Plan Irreg	Pre-Code	Post-Bench	Soil C	Soil D	Soil E	RVS Score
Primary	W1	4.4	0	0	0	0	0	0	0	4.4
Secondary		0	0	0	0	0	0	0	0	0
Tertiary		0	0	0	0	0	0	0	0	0

Gold Beach High School

Final RVS Score

Final Type

Final Score

W1

4.4

FEMA-154 Collapse Potential

Low (<1%)



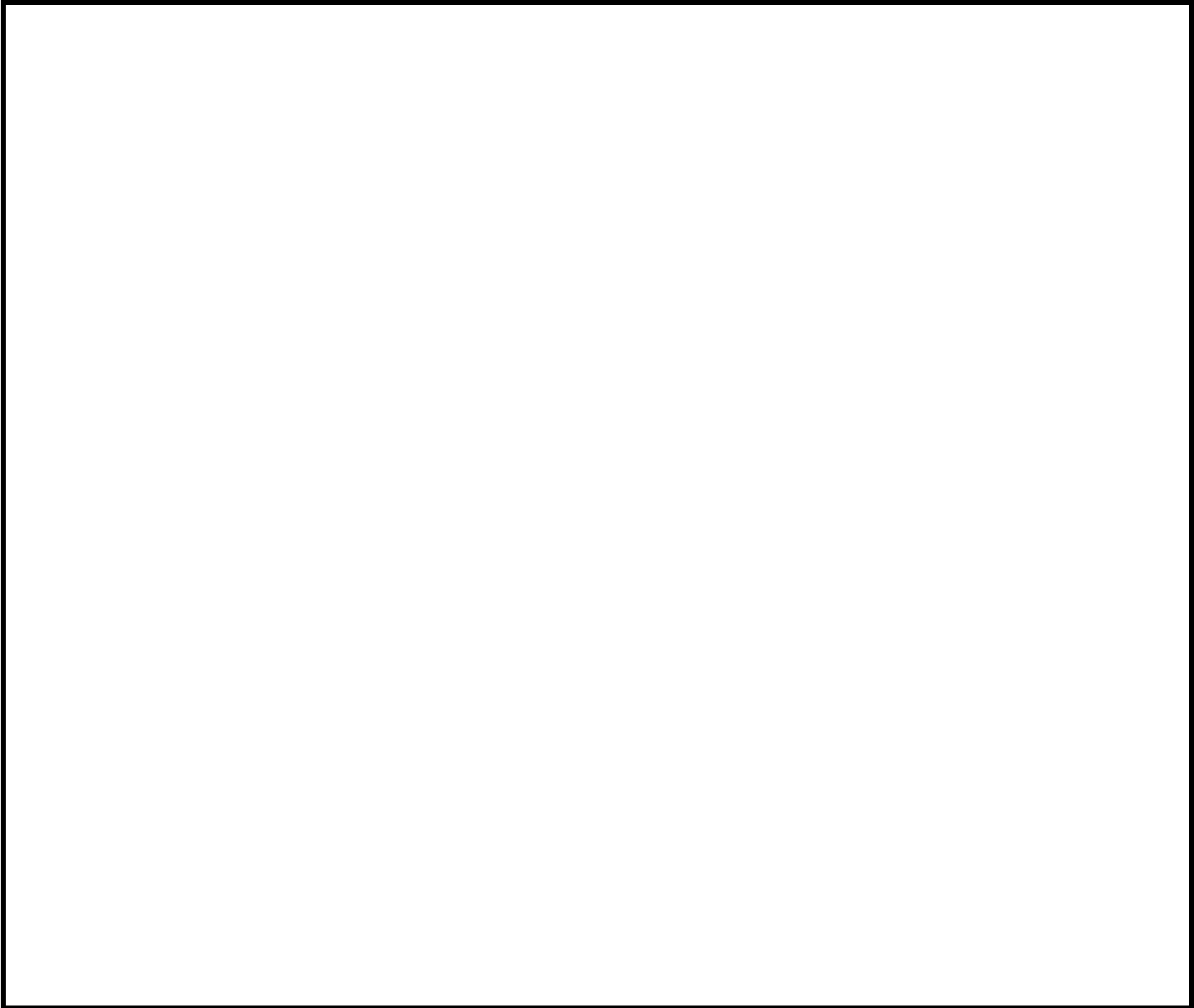
OregonGeology

Rapid Visual Screening - Senate Bill #2 - Seismic Needs Assessment
Oregon Department of Geology and Mineral Industries

Enrollment	Year Built (Field Verified)	Year Built (Alt. Source)	Est. Decade Built
244		1927	1970
Total Area (square ft)	Number of Stories	Basement	Pounding Potential
93110	1	No	No

Plan Irregularities	Vertical Irregularities
None	None
None	None
None	None

Falling Hazards	Poor Conditions
None	None
None	None
None	None



Gold Beach High School

Central Curry SD 1

Curr_sch04E

Building Type		County	
School		Curry	
Street			
29516 Ellensburg Ave			
City	State	Zip	
Gold Beach	OR	97444	
Latitude		Longitude	
42.40774		124.42223	
Tracking Code		Inspection Date	
RVS in 2006		8/4/2006	



Seismicity Zone: Very High

FEMA 154 Rapid Visual Screening Score Card

	Type	Basic Score	Vert Irreg	Plan Irreg	Pre-Code	Post-Bench	Soil C	Soil D	Soil E	RVS Score
Primary	W1	4.4	0	0	0	0	0	0	0	4.4
Secondary		0	0	0	0	0	0	0	0	0
Tertiary		0	0	0	0	0	0	0	0	0

Gold Beach High School

Final RVS Score

Final Type

Final Score

W1

4.4

FEMA-154 Collapse Potential

Low (<1%)



OregonGeology

Rapid Visual Screening - Senate Bill #2 - Seismic Needs Assessment
Oregon Department of Geology and Mineral Industries

Enrollment	Year Built (Field Verified)	Year Built (Alt. Source)	Est. Decade Built
244		1927	1970
Total Area (square ft)	Number of Stories	Basement	Pounding Potential
93110	1	No	No

Plan Irregularities	Vertical Irregularities
None	None
None	None
None	None

Falling Hazards	Poor Conditions
None	None
None	None
None	None