

Buckingham Elementary School

Desc_sch03A

Bend-LaPine SD 1

Building Type		County	
School		Deschutes	
Street			
62560 Hamby Rd			
City	State	Zip	
Bend	OR	97701	
Latitude		Longitude	
44.07239		121.24214	
Tracking Code		Inspection Date	
RVS in 2006		7/5/2006	



Seismicity Zone: Moderate

FEMA 154 Rapid Visual Screening Score Card

	Type	Basic Score	Vert Irreg	Plan Irreg	Pre-Code	Post-Bench	Soil C	Soil D	Soil E	RVS Score
Primary	RM2	3.4	-1.5	-0.5	0	0	-0.6	0	0	0.8
Secondary	C2	3.6	-2	-0.5	0	0	-0.8	0	0	0.3
Tertiary	W2	4.8	-3	-0.5	0	1.6	-0.8	0	0	2.1

Buckingham Elementary School

Final RVS Score

Final Type

Final Score

C2

0.3

FEMA-154 Collapse Potential

High (>10%)



OregonGeology

Rapid Visual Screening - Senate Bill #2 - Seismic Needs Assessment
Oregon Department of Geology and Mineral Industries

Buckingham Elementary School

Desc_sch03A

Enrollment	Year Built (Field Verified)	Year Built (Alt. Source)	Est. Decade Built
681		1980	1980
Total Area (square ft)	Number of Stories	Basement	Pounding Potential
55376	1	No	No

Plan Irregularities	Vertical Irregularities
Reentrant Corners: Other	Steps in Elevation View: 2 to 3 Changes
None	None
None	None

Falling Hazards	Poor Conditions
Other: Ornamental Hazard Over Exit	None
None	None
None	None



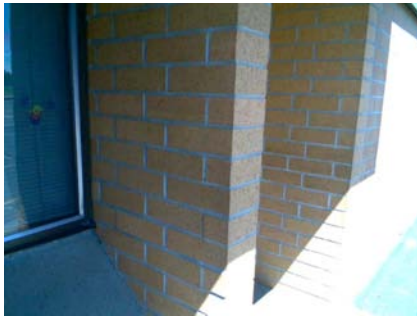
E Falling Hazard



NW Plan Irregularity Primary



NW Vertical Irregularity Primary



NW Primary Structural Type



NW General Site