

# Sisters Middle School

Desc\_sch16A

Sisters SD 6

Building Type		County	
School		Deschutes	
Street			
15200 Mckenzie Hwy			
City	State	Zip	
Sisters	OR	97759	
Latitude		Longitude	
44.29278		121.57132	
Tracking Code		Inspection Date	
RVS in 2006		6/28/2006	



Seismicity Zone: Moderate

## FEMA 154 Rapid Visual Screening Score Card

	Type	Basic Score	Vert Irreg	Plan Irreg	Pre-Code	Post-Bench	Soil C	Soil D	Soil E	RVS Score
Primary	S2	3.6	-2	-0.5	0	0	0	-1.2	0	-0.1
Secondary	S1	3.6	-2	-0.5	0	0	0	-1	0	0.1
Tertiary	W2	4.8	-3	-0.5	0	1.6	0	-1.2	0	1.7

Sisters Middle School

## Final RVS Score

Final Type

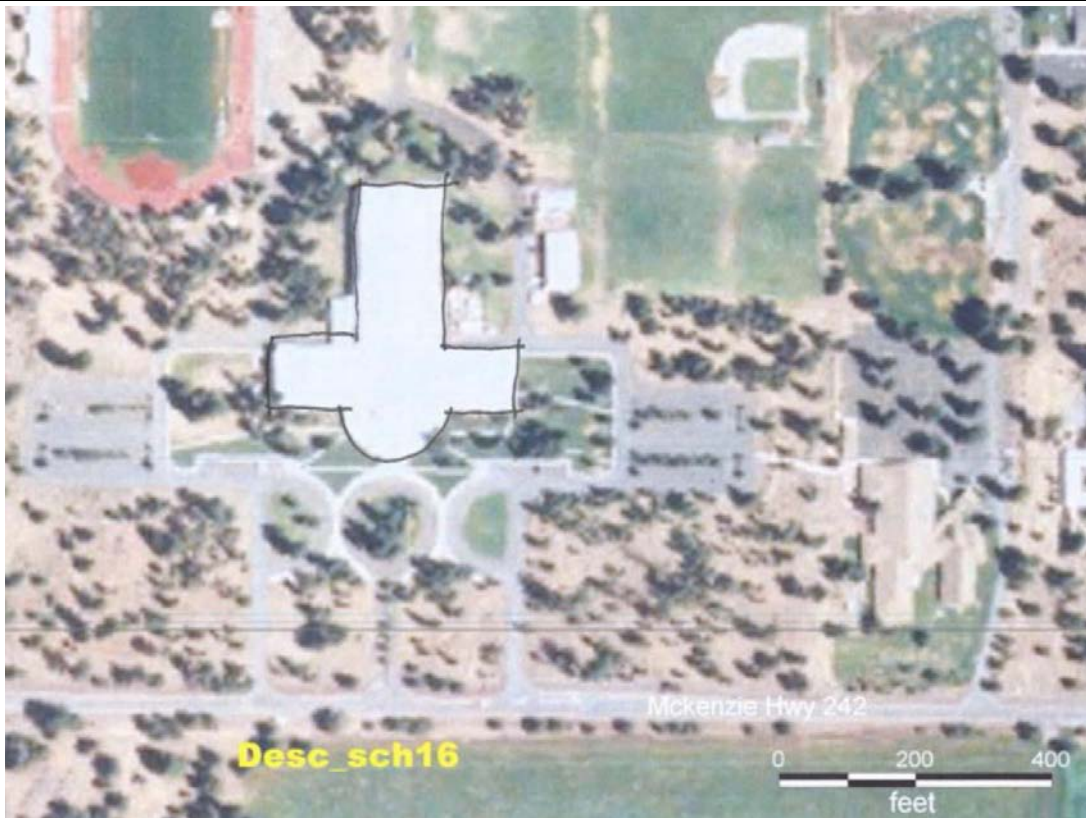
Final Score

S2

-0.1

## FEMA-154 Collapse Potential

Very High (100%)



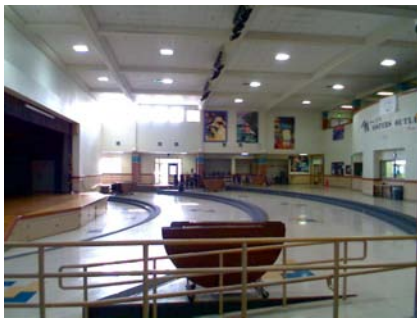
OregonGeology

Rapid Visual Screening - Senate Bill #2 - Seismic Needs Assessment  
Oregon Department of Geology and Mineral Industries

Enrollment	Year Built (Field Verified)	Year Built (Alt. Source)	Est. Decade Built
322		1992	1990
Total Area (square ft)	Number of Stories	Basement	Pounding Potential
96400	2	No	No

Plan Irregularities	Vertical Irregularities
Reentrant Corners: T shaped	Steps in Elevation View: 2 to 3 Changes
Large Diaphragm or Central Opening	None
None	None

Falling Hazards	Poor Conditions
None	None
None	None
None	None



N Primary Structural Type



N Primary Structural Type

NW Plan Irregularity Primary  
t shape also some question about structural type