

Glendale Elementary School

Glendale SD 77

Doug_sch22A

Building Type		County	
School		Douglas	
Street			
100 Pacific Ave			
City	State	Zip	
Glendale	OR	97442	
Latitude		Longitude	
42.73582		123.42454	
Tracking Code		Inspection Date	
RVS in 2006		8/30/2006	



Seismicity Zone: High

FEMA 154 Rapid Visual Screening Score Card

	Type	Basic Score	Vert Irreg	Plan Irreg	Pre-Code	Post-Bench	Soil C	Soil D	Soil E	RVS Score
Primary	W2	3.8	-2	-0.5	0	0	-0.4	0	0	0.9
Secondary		0	0	0	0	0	0	0	0	0
Tertiary		0	0	0	0	0	0	0	0	0

Glendale Elementary School

Final RVS Score

Final Type

Final Score

W2

0.9

FEMA-154 Collapse Potential

High (>10%)



OregonGeology

Rapid Visual Screening - Senate Bill #2 - Seismic Needs Assessment
Oregon Department of Geology and Mineral Industries

Enrollment	Year Built (Field Verified)	Year Built (Alt. Source)	Est. Decade Built
241		1977	1970
Total Area (square ft)	Number of Stories	Basement	Pounding Potential
58512	1	No	No

Plan Irregularities	Vertical Irregularities
Reentrant Corners: Other	Steps in Elevation View: Very Irregular Changes
Out of Plane Lateral-Force-Resistance Elements	None
Large Diaphragm or Central Opening	None

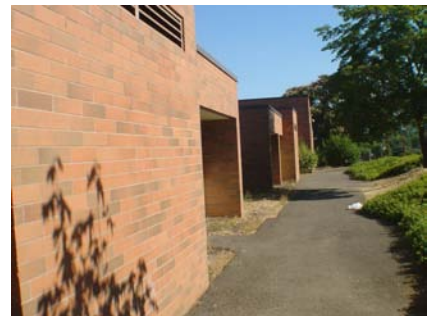
Falling Hazards	Poor Conditions
None	None
None	None
None	None



W Vertical Irregularity Primary



SW Plan Irregularity Primary



E Plan Irregularity Secondary