

Humbolt Elementary School

John Day SD 3

Gran_sch06A

Building Type		County	
School		Grant	
Street			
329 N Humbolt St			
City	State	Zip	
Canyon City	OR	97820	
Latitude		Longitude	
44.39911		118.94914	
Tracking Code		Inspection Date	
RVS in 2006		7/27/2006	



Seismicity Zone: Moderate

FEMA 154 Rapid Visual Screening Score Card

	Type	Basic Score	Vert Irreg	Plan Irreg	Pre-Code	Post-Bench	Soil C	Soil D	Soil E	RVS Score
Primary	W2	4.8	-3	-0.5	0	0	0	-1.2	0	0.1
Secondary	RM1	3.6	-2	-0.5	0	0	0	-1.2	0	-0.1
Tertiary		0	0	0	0	0	0	0	0	0

Humbolt Elementary School

Final RVS Score

Final Type

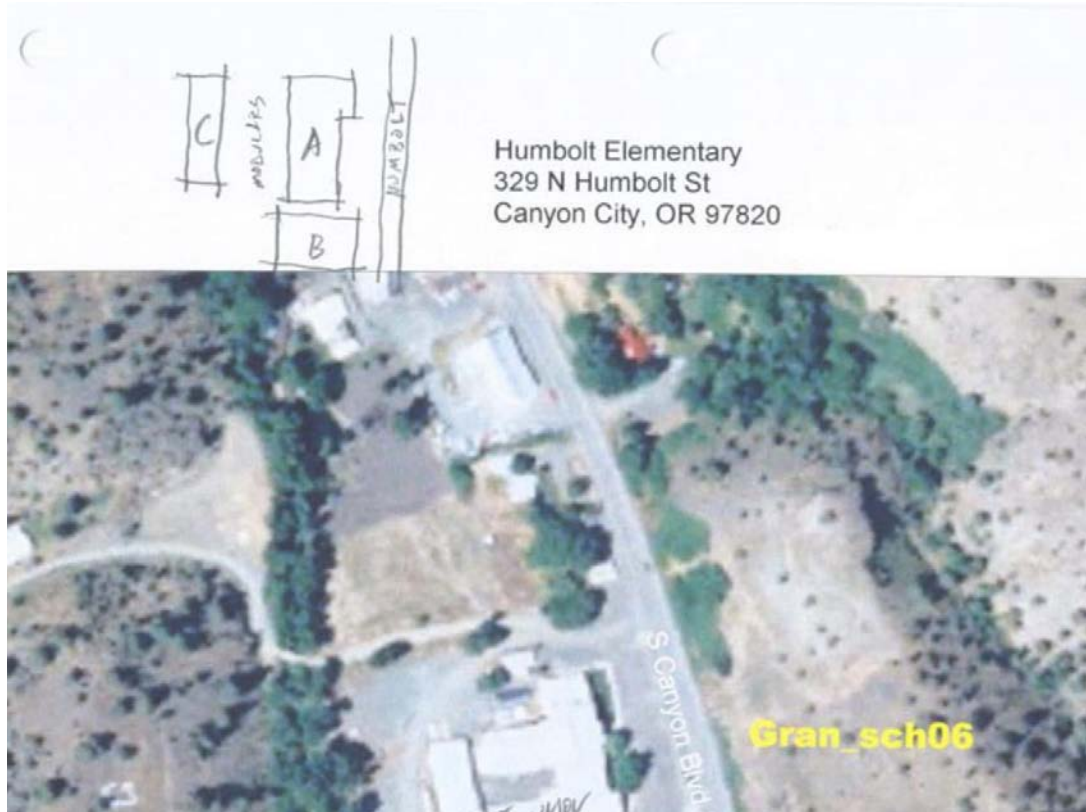
Final Score

RM1

-0.1

FEMA-154 Collapse Potential

Very High (100%)



OregonGeology

Rapid Visual Screening - Senate Bill #2 - Seismic Needs Assessment
Oregon Department of Geology and Mineral Industries

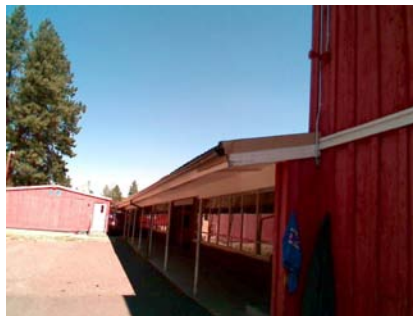
Enrollment	Year Built (Field Verified)	Year Built (Alt. Source)	Est. Decade Built
286		1956	1950
Total Area (square ft)	Number of Stories	Basement	Pounding Potential
28990	1	No	No

Plan Irregularities	Vertical Irregularities
Reentrant Corners: L Shaped	Steps in Elevation View: Single Change
None	None
None	None

Falling Hazards	Poor Conditions
None	None
None	None
None	None



E Vertical Irregularity Primary



W Elevation View



Humbolt Elementary School

John Day SD 3

Gran_sch06B

Building Type		County	
School		Grant	
Street			
329 N Humbolt St			
City	State	Zip	
Canyon City	OR	97820	
Latitude		Longitude	
44.39857		118.94915	
Tracking Code		Inspection Date	
RVS in 2006		7/27/2006	



Seismicity Zone: Moderate

FEMA 154 Rapid Visual Screening Score Card

	Type	Basic Score	Vert Irreg	Plan Irreg	Pre-Code	Post-Bench	Soil C	Soil D	Soil E	RVS Score
Primary	W2	4.8	0	0	0	0	0	-1.2	0	3.6
Secondary	RM1	3.6	0	0	0	0	0	-1.2	0	2.4
Tertiary		0	0	0	0	0	0	0	0	0

Humbolt Elementary School

Final RVS Score

Final Type

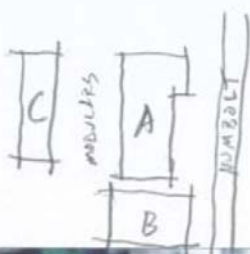
Final Score

RM1

2.4

FEMA-154 Collapse Potential

Low (<1%)



Humbolt Elementary
329 N Humbolt St
Canyon City, OR 97820



OregonGeology

Rapid Visual Screening - Senate Bill #2 - Seismic Needs Assessment
Oregon Department of Geology and Mineral Industries

Enrollment	Year Built (Field Verified)	Year Built (Alt. Source)	Est. Decade Built
286		1956	1960
Total Area (square ft)	Number of Stories	Basement	Pounding Potential
28990	1	No	No

Plan Irregularities	Vertical Irregularities
None	None
None	None
None	None

Falling Hazards	Poor Conditions
None	None
None	None
None	None

Humbolt Elementary School

John Day SD 3

Gran_sch06C

Building Type		County	
School		Grant	
Street			
329 N Humbolt St			
City		State	Zip
Canyon City		OR	97820
Latitude		Longitude	
44.39926		118.94966	
Tracking Code		Inspection Date	
RVS in 2006		7/27/2006	



Seismicity Zone: Moderate

FEMA 154 Rapid Visual Screening Score Card

	Type	Basic Score	Vert Irreg	Plan Irreg	Pre-Code	Post-Bench	Soil C	Soil D	Soil E	RVS Score
Primary	W1	5.2	0	0	0	0	0	-0.6	0	4.6
Secondary	RM1	3.6	0	0	0	0	0	-1.2	0	2.4
Tertiary		0	0	0	0	0	0	0	0	0

Humbolt Elementary School

Final RVS Score

Final Type

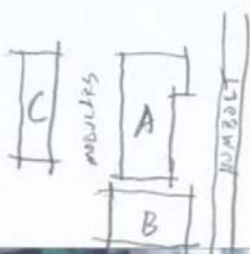
Final Score

RM1

2.4

FEMA-154 Collapse Potential

Low (<1%)



Humbolt Elementary
329 N Humbolt St
Canyon City, OR 97820



OregonGeology

Rapid Visual Screening - Senate Bill #2 - Seismic Needs Assessment
Oregon Department of Geology and Mineral Industries

Enrollment	Year Built (Field Verified)	Year Built (Alt. Source)	Est. Decade Built
286		1956	1970
Total Area (square ft)	Number of Stories	Basement	Pounding Potential
28990	1	No	No

Plan Irregularities	Vertical Irregularities
None	None
None	None
None	None

Falling Hazards	Poor Conditions
None	None
None	None
None	None