

# Hines Middle School

Harney County SD 3

Harn\_sch05A

Building Type		County	
School		Harney	
Street			
500 W Barnes Ave			
City	State	Zip	
Hines	OR	97738	
Latitude		Longitude	
43.56334		119.08753	
Tracking Code		Inspection Date	
RVS in 2006		6/28/2006	



Seismicity Zone: Moderate

## FEMA 154 Rapid Visual Screening Score Card

	Type	Basic Score	Vert Irreg	Plan Irreg	Pre-Code	Post-Bench	Soil C	Soil D	Soil E	RVS Score
Primary	URM	3.4	-1.5	-0.5	-0.4	0	0	-0.8	0	0.2
Secondary		0	0	0	0	0	0	0	0	0
Tertiary		0	0	0	0	0	0	0	0	0

Hines Middle School

## Final RVS Score

Final Type

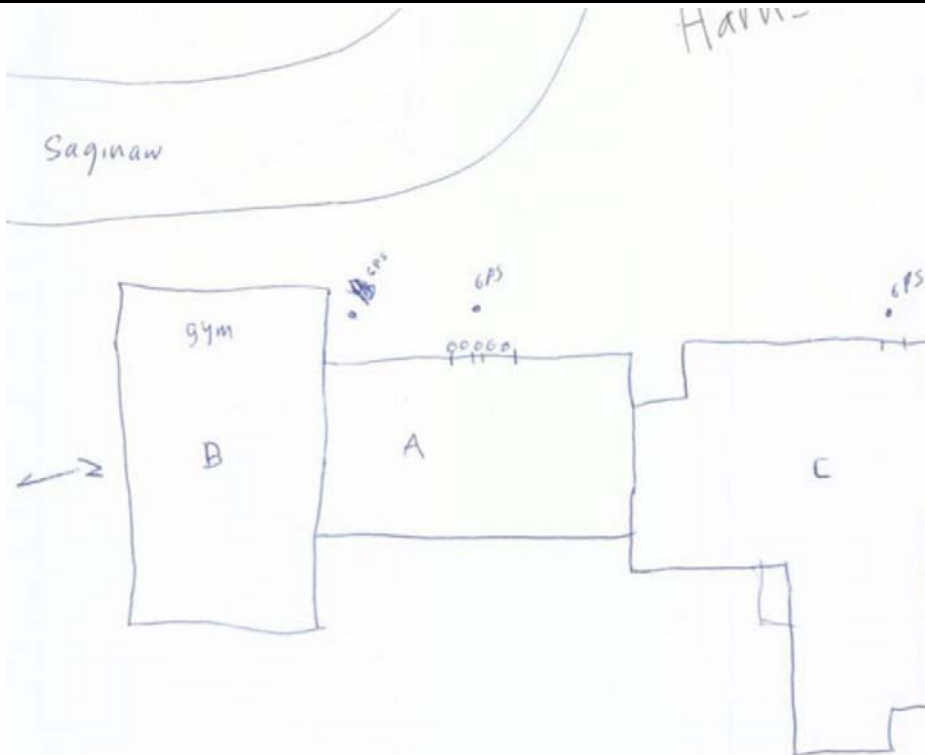
Final Score

URM

0.2

FEMA-154 Collapse Potential

High (>10%)



OregonGeology

Rapid Visual Screening - Senate Bill #2 - Seismic Needs Assessment  
Oregon Department of Geology and Mineral Industries

Enrollment	Year Built (Field Verified)	Year Built (Alt. Source)	Est. Decade Built
252	1931	1930	1930
Total Area (square ft)	Number of Stories	Basement	Pounding Potential
	1	Yes	Yes

Plan Irregularities	Vertical Irregularities
Reentrant Corners:L shaped (Adjacent Build/Entity)	Steps in Elevation View: Single Change (Adjacent Building/Entity)
None	None
None	None

Falling Hazards	Poor Conditions
Other: Ornamental Hazard Over Exit	Poor Masonry
None	None
None	None



E Primary Structural Type



E Poor Condition



W General Site

# Hines Middle School

Harney County SD 3

Harn\_sch05B

Building Type		County	
School		Harney	
Street			
500 W Barnes Ave			
City	State	Zip	
Hines	OR	97738	
Latitude		Longitude	
43.56356		119.08734	
Tracking Code		Inspection Date	
RVS in 2006		6/28/2006	



Seismicity Zone: Moderate

## FEMA 154 Rapid Visual Screening Score Card

	Type	Basic Score	Vert Irreg	Plan Irreg	Pre-Code	Post-Bench	Soil C	Soil D	Soil E	RVS Score
Primary	C2	3.6	-2	-0.5	0	0	0	-1.2	0	-0.1
Secondary	RM1	3.6	-2	-0.5	0	0	0	-1.2	0	-0.1
Tertiary		0	0	0	0	0	0	0	0	0

Hines Middle School

## Final RVS Score

Final Type

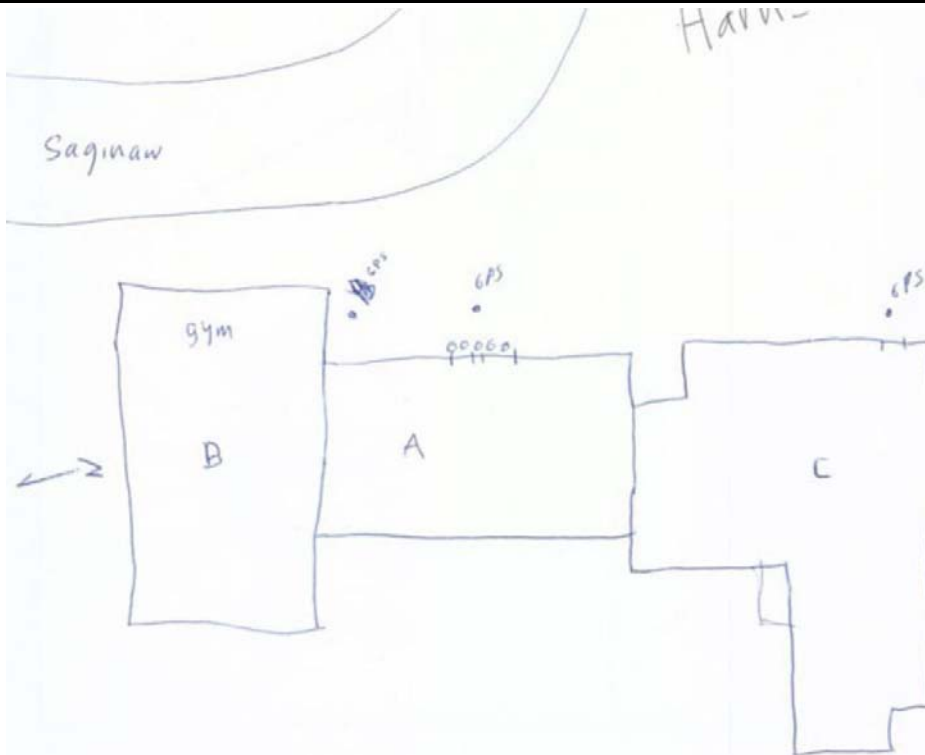
Final Score

C2

-0.1

## FEMA-154 Collapse Potential

Very High (100%)



OregonGeology

Rapid Visual Screening - Senate Bill #2 - Seismic Needs Assessment  
Oregon Department of Geology and Mineral Industries

Enrollment	Year Built (Field Verified)	Year Built (Alt. Source)	Est. Decade Built
252		1930	1950
Total Area (square ft)	Number of Stories	Basement	Pounding Potential
	1	No	Yes

Plan Irregularities	Vertical Irregularities
Reentrant Corners: L shaped (Adjacent Build/Entity)	Steps in Elevation View: Single Change (Adjacent Building/Entity)
None	None
None	None

Falling Hazards	Poor Conditions
Other: Brick Veneer	None
None	None
None	None



E Elevation View



N Elevation View



W General Site

# Hines Middle School

Harney County SD 3

Harn\_sch05C

Building Type		County	
School		Harney	
Street			
500 W Barnes Ave			
City	State	Zip	
Hines	OR	97738	
Latitude		Longitude	
43.56304		119.08779	
Tracking Code		Inspection Date	
RVS in 2006		6/28/2006	



Seismicity Zone: Moderate

## FEMA 154 Rapid Visual Screening Score Card

	Type	Basic Score	Vert Irreg	Plan Irreg	Pre-Code	Post-Bench	Soil C	Soil D	Soil E	RVS Score
Primary	C2	3.6	0	-0.5	0	0	0	-1.2	0	1.9
Secondary	RM1	3.6	0	-0.5	0	0	0	-1.2	0	1.9
Tertiary		0	0	0	0	0	0	0	0	0

Hines Middle School

## Final RVS Score

Final Type

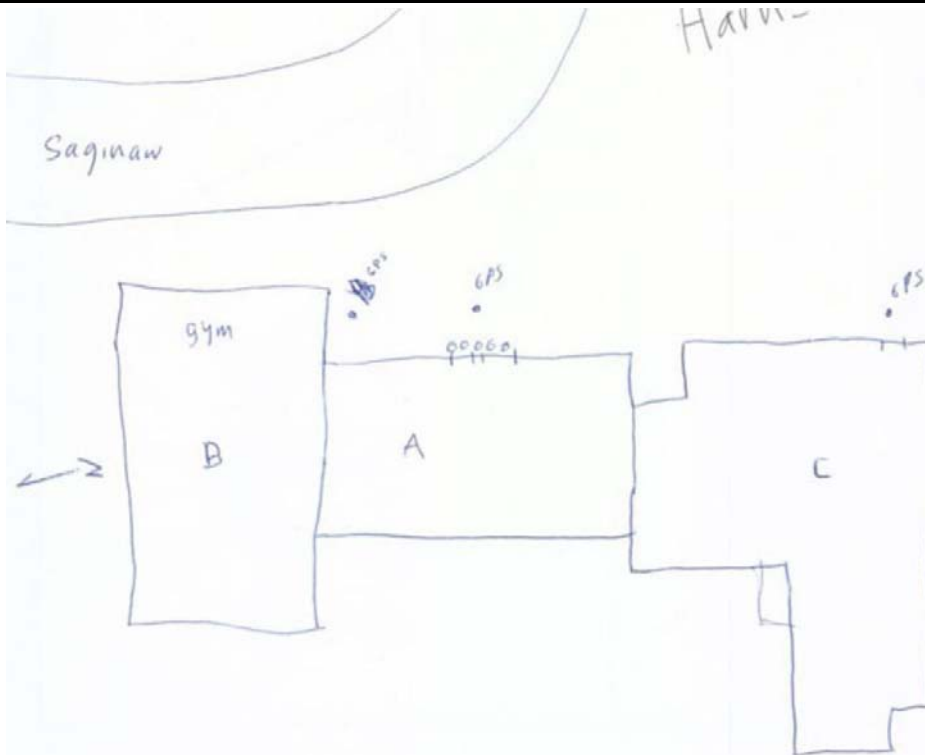
Final Score

C2

1.9

## FEMA-154 Collapse Potential

Moderate (>1%)



OregonGeology

Rapid Visual Screening - Senate Bill #2 - Seismic Needs Assessment  
Oregon Department of Geology and Mineral Industries

Enrollment	Year Built (Field Verified)	Year Built (Alt. Source)	Est. Decade Built
252		1930	1950
Total Area (square ft)	Number of Stories	Basement	Pounding Potential
	2	No	No

Plan Irregularities	Vertical Irregularities
Reentrant Corners: L shaped (Adjacent Build/Entity)	None
Out of Plane Lateral-Force-Resistance Elements	None
Reentrant Corners: L Shaped	None

Falling Hazards	Poor Conditions
Other: Brick Veneer	None
None	None
None	None



E Elevation View



E Elevation View



W General Site



S General Site