

Hood River - Bldg 1 - Instruction

Hood_coc01A

Columbia Gorge CC

Building Type		County	
Community_College		Hood River	
Street			
616 Industrial St			
City	State	Zip	
Hood River	OR	97031	
Latitude		Longitude	
45.71119		121.51719	
Tracking Code		Inspection Date	
RVS2006 & FEMA154		8/2/2006	



Seismicity Zone: Moderate

FEMA 154 Rapid Visual Screening Score Card

	Type	Basic Score	Vert Irreg	Plan Irreg	Pre-Code	Post-Bench	Soil C	Soil D	Soil E	RVS Score
Primary	S4	4	-2	-0.5	0	0	0	0	0	1.5
Secondary		0	0	0	0	0	0	0	0	0
Tertiary		0	0	0	0	0	0	0	0	0

Hood River - Bldg 1 - Instruction

Final RVS Score

Final Type

Final Score

S4

1.5

FEMA-154 Collapse Potential

Moderate (>1%)



OregonGeology

Rapid Visual Screening - Senate Bill #2 - Seismic Needs Assessment
Oregon Department of Geology and Mineral Industries

Hood River - Bldg 1 - Instruction

Hood_coc01A

Enrollment	Year Built (Field Verified)	Year Built (Alt. Source)	Est. Decade Built
	1963	1963	1960
Total Area (square ft)	Number of Stories	Basement	Pounding Potential
77386	5	Yes	No

Plan Irregularities	Vertical Irregularities
Yes: Unknown	Yes: Unknown
None	Steps in Elevation View: Single Change (Adjacent Building/Entity)
None	Building On Hill or Sloped Site

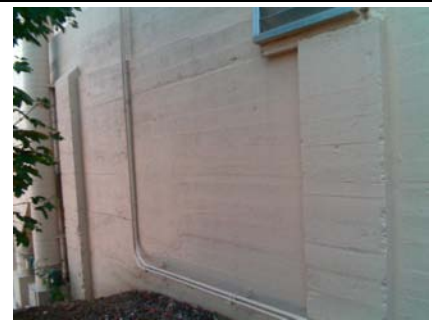
Falling Hazards	Poor Conditions
Other: Light Cladding	None
None	None
None	None



W Elevation View
sloped site 1.5 to 2 stories



W Elevation View
2nd story addition ?



W Primary Structural Type



SW Vertical Irregularity Primary



S Primary Structural Type



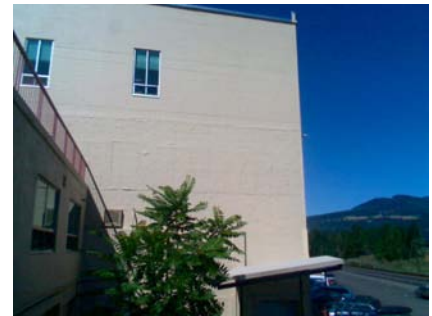
E General Site
masonry infill ?



E General Site



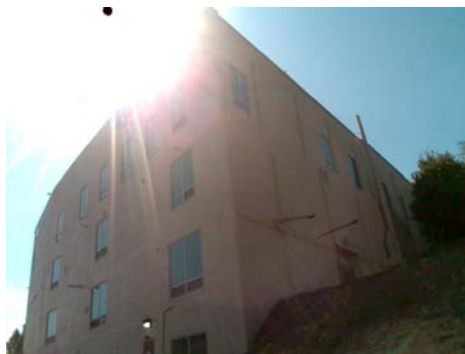
E Elevation View



E Elevation View



N Elevation View



NW Elevation View

