

# Parkdale RFPD

Hood\_fir01A

Parkdale RFPD

Building Type		County	
Fire - RFPD		Hood	
Street			
4895 Baseline Dr			
City	State	Zip	
Mount Hood Parkdale	OR	97041	
Latitude	Longitude		
45.51932	121.59054		
Tracking Code	Inspection Date		
RVS in 2006	8/4/2006		



Seismicity Zone: Moderate

## FEMA 154 Rapid Visual Screening Score Card

	Type	Basic Score	Vert Irreg	Plan Irreg	Pre-Code	Post-Bench	Soil C	Soil D	Soil E	RVS Score
Primary	RM1	3.6	-2	-0.5	0	0	0	-1.2	0	-0.1
Secondary		0	0	0	0	0	0	0	0	0
Tertiary		0	0	0	0	0	0	0	0	0

Parkdale RFPD

## Final RVS Score

Final Type

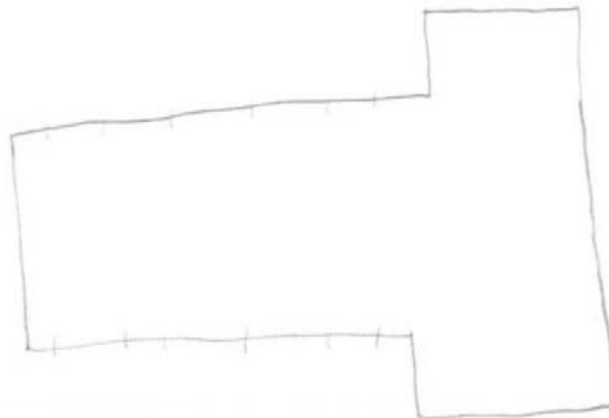
Final Score

RM1

-0.1

## FEMA-154 Collapse Potential

Very High (100%)



OregonGeology

Rapid Visual Screening - Senate Bill #2 - Seismic Needs Assessment  
Oregon Department of Geology and Mineral Industries

Enrollment	Year Built (Field Verified)	Year Built (Alt. Source)	Est. Decade Built
	1990	1990	1990
Total Area (square ft)	Number of Stories	Basement	Pounding Potential
	1	No	No

Plan Irregularities	Vertical Irregularities
Reentrant Corners: T shaped	Steps in Elevation View: Single Change
Lateral-Force-Resistance in One Direction Only	None
None	None

Falling Hazards	Poor Conditions
None	None
None	None
None	None



N Elevation View



N Primary Structural Type



E Elevation View



S Elevation View

