

Hood River Valley High School

Hood River County SD

Hood_sch04A

Building Type		County	
School		Hood	
Street			
1220 Indian Creek Rd			
City	State	Zip	
Hood River	OR	97031	
Latitude		Longitude	
45.68433		121.54523	
Tracking Code		Inspection Date	
RVS in 2006		8/2/2006	



Seismicity Zone: Moderate

FEMA 154 Rapid Visual Screening Score Card

	Type	Basic Score	Vert Irreg	Plan Irreg	Pre-Code	Post-Bench	Soil C	Soil D	Soil E	RVS Score
Primary	S2	3.6	0	-0.5	0	1.4	-0.8	0	0	3.7
Secondary		0	0	0	0	0	0	0	0	0
Tertiary		0	0	0	0	0	0	0	0	0

Hood River Valley High School

Final RVS Score

Final Type

Final Score

S2

3.7

FEMA-154 Collapse Potential

Low (<1%)



OregonGeology

Rapid Visual Screening - Senate Bill #2 - Seismic Needs Assessment
Oregon Department of Geology and Mineral Industries

Enrollment	Year Built (Field Verified)	Year Built (Alt. Source)	Est. Decade Built
1239	2002	1970	2000
Total Area (square ft)	Number of Stories	Basement	Pounding Potential
180295	1	No	Yes

Plan Irregularities	Vertical Irregularities
Out of Plane Lateral-Force-Resistance Elements	None
Reentrant Corners: L Shaped	None
Reentrant Corners: L Shaped	None

Falling Hazards	Poor Conditions
None	None
None	None
None	None



W Primary Structural Type
block cladding



E Elevation View



S Elevation View



Hood River Valley High School

Hood River County SD

Hood_sch04B

Building Type		County	
School		Hood	
Street			
1220 Indian Creek Rd			
City	State	Zip	
Hood River	OR	97031	
Latitude		Longitude	
45.68435		121.54574	
Tracking Code		Inspection Date	
RVS in 2006		8/3/2006	



Seismicity Zone: Moderate

FEMA 154 Rapid Visual Screening Score Card

	Type	Basic Score	Vert Irreg	Plan Irreg	Pre-Code	Post-Bench	Soil C	Soil D	Soil E	RVS Score
Primary	PC1	3.2	0	-0.5	0	0	-0.6	0	0	2.1
Secondary		0	0	0	0	0	0	0	0	0
Tertiary		0	0	0	0	0	0	0	0	0

Hood River Valley High School

Final RVS Score

Final Type

Final Score

PC1

2.1

FEMA-154 Collapse Potential

Low (<1%)



OregonGeology

Rapid Visual Screening - Senate Bill #2 - Seismic Needs Assessment
Oregon Department of Geology and Mineral Industries

Enrollment	Year Built (Field Verified)	Year Built (Alt. Source)	Est. Decade Built
1239	1970	1970	1970
Total Area (square ft)	Number of Stories	Basement	Pounding Potential
180295	1	No	Yes

Plan Irregularities	Vertical Irregularities
Reentrant Corners:L shaped (Adjacent Build/Entity)	Steps in Elevation View: Single Change (Adjacent Building/Entity)
None	None
None	None

Falling Hazards	Poor Conditions
Other: Light Cladding	Poor Concrete
None	None
None	None



E Elevation View



SW Elevation View

SW Other
poor concrete

Hood River Valley High School

Hood River County SD

Hood_sch04C

Building Type		County	
School		Hood	
Street			
1220 Indian Creek Rd			
City	State	Zip	
Hood River	OR	97031	
Latitude		Longitude	
45.68466		121.54663	
Tracking Code		Inspection Date	
RVS in 2006		8/3/2006	



Seismicity Zone: Moderate

FEMA 154 Rapid Visual Screening Score Card

	Type	Basic Score	Vert Irreg	Plan Irreg	Pre-Code	Post-Bench	Soil C	Soil D	Soil E	RVS Score
Primary	PC1	3.2	0	-0.5	0	0	-0.6	0	0	2.1
Secondary		0	0	0	0	0	0	0	0	0
Tertiary		0	0	0	0	0	0	0	0	0

Hood River Valley High School

Final RVS Score

Final Type

Final Score

PC1

2.1

FEMA-154 Collapse Potential

Low (<1%)



OregonGeology

Rapid Visual Screening - Senate Bill #2 - Seismic Needs Assessment
Oregon Department of Geology and Mineral Industries

Enrollment	Year Built (Field Verified)	Year Built (Alt. Source)	Est. Decade Built
1239	1970	1970	1970
Total Area (square ft)	Number of Stories	Basement	Pounding Potential
180295	1	No	No

Plan Irregularities	Vertical Irregularities
Reentrant Corners:L shaped (Adjacent Build/Entity)	Steps in Elevation View: Single Change (Adjacent Building/Entity)
None	None
None	None

Falling Hazards	Poor Conditions
Other: Light Cladding	Poor Concrete
None	None
None	None



Hood River Valley High School

Hood River County SD

Hood_sch04D

Building Type		County	
School		Hood	
Street			
1220 Indian Creek Rd			
City	State	Zip	
Hood River	OR	97031	
Latitude		Longitude	
45.68475		121.54565	
Tracking Code		Inspection Date	
RVS in 2006		8/3/2006	



Seismicity Zone: Moderate

FEMA 154 Rapid Visual Screening Score Card

	Type	Basic Score	Vert Irreg	Plan Irreg	Pre-Code	Post-Bench	Soil C	Soil D	Soil E	RVS Score
Primary	PC1	3.2	0	-0.5	0	0	-0.6	0	0	2.1
Secondary		0	0	0	0	0	0	0	0	0
Tertiary		0	0	0	0	0	0	0	0	0

Hood River Valley High School

Final RVS Score

Final Type

Final Score

PC1

2.1

FEMA-154 Collapse Potential

Low (<1%)




OregonGeology

Rapid Visual Screening - Senate Bill #2 - Seismic Needs Assessment
Oregon Department of Geology and Mineral Industries


Enrollment	Year Built (Field Verified)	Year Built (Alt. Source)	Est. Decade Built
1239	1970	1970	1970
Total Area (square ft)	Number of Stories	Basement	Pounding Potential
180295	1	No	Yes

Plan Irregularities	Vertical Irregularities
Reentrant Corners:L shaped (Adjacent Build/Entity)	Steps in Elevation View: Single Change (Adjacent Building/Entity)
None	None
None	None

Falling Hazards	Poor Conditions
Other: Light Cladding	Poor Concrete
None	None
None	None



E Primary Structural Type



S Elevation View

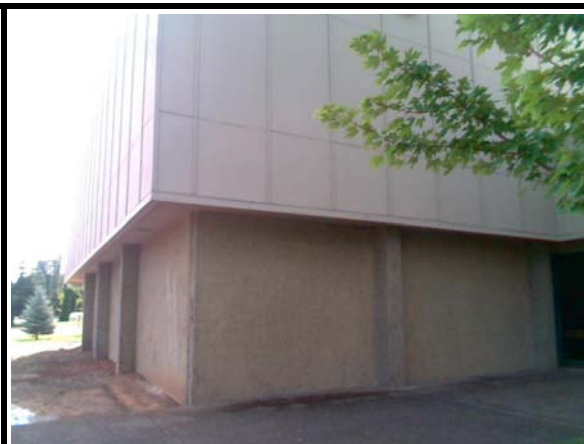


Hood River Valley High School

Hood River County SD

Hood_sch04E

Building Type		County	
School		Hood	
Street			
1220 Indian Creek Rd			
City	State	Zip	
Hood River	OR	97031	
Latitude		Longitude	
45.68503		121.54551	
Tracking Code		Inspection Date	
RVS in 2006		8/3/2006	



Seismicity Zone: Moderate

FEMA 154 Rapid Visual Screening Score Card

	Type	Basic Score	Vert Irreg	Plan Irreg	Pre-Code	Post-Bench	Soil C	Soil D	Soil E	RVS Score
Primary	PC1	3.2	0	-0.5	0	0	-0.6	0	0	2.1
Secondary		0	0	0	0	0	0	0	0	0
Tertiary		0	0	0	0	0	0	0	0	0

Hood River Valley High School

Final RVS Score

Final Type

Final Score

PC1

2.1

FEMA-154 Collapse Potential

Low (<1%)





OregonGeology

Rapid Visual Screening - Senate Bill #2 - Seismic Needs Assessment
Oregon Department of Geology and Mineral Industries

Enrollment	Year Built (Field Verified)	Year Built (Alt. Source)	Est. Decade Built
1239	1970	1970	1970
Total Area (square ft)	Number of Stories	Basement	Pounding Potential
180295	1	No	Yes

Plan Irregularities	Vertical Irregularities
Reentrant Corners:L shaped (Adjacent Build/Entity)	Steps in Elevation View: Single Change (Adjacent Building/Entity)
None	None
None	None

Falling Hazards	Poor Conditions
Other: Light Cladding	Poor Concrete
None	None
None	None



NW Primary Structural Type

E Elevation View

