

Hood River Middle School

Hood River County SD

Hood_sch05A

Building Type		County	
School		Hood	
Street			
1602 May Street			
City	State	Zip	
Hood River	OR	97031	
Latitude		Longitude	
45.70452		121.52766	
Tracking Code		Inspection Date	
RVS in 2006		8/3/2006	



Seismicity Zone: Moderate

FEMA 154 Rapid Visual Screening Score Card

	Type	Basic Score	Vert Irreg	Plan Irreg	Pre-Code	Post-Bench	Soil C	Soil D	Soil E	RVS Score
Primary	URM	3.4	-1.5	-0.5	-0.4	0	0	-0.8	0	0.2
Secondary	C2	3.6	-2	-0.5	-0.4	0	0	-1.2	0	-0.5
Tertiary		0	0	0	0	0	0	0	0	0

Hood River Middle School

Final RVS Score

Final Type

Final Score

C2

-0.5

FEMA-154 Collapse Potential

Very High (100%)



OregonGeology

Rapid Visual Screening - Senate Bill #2 - Seismic Needs Assessment
Oregon Department of Geology and Mineral Industries

Enrollment	Year Built (Field Verified)	Year Built (Alt. Source)	Est. Decade Built
451	1927	1927	1920
Total Area (square ft)	Number of Stories	Basement	Pounding Potential
88483	2	No	No

Plan Irregularities	Vertical Irregularities
Reentrant Corners: U shaped	Building On Hill or Sloped Site
None	None
None	None

Falling Hazards	Poor Conditions
Parapets: Unreinforced Over Exit	None
Parapets: Any >6 ft height	None
None	None



S Elevation View



S Primary Structural Type



SW Elevation View

S Falling Hazard
smokestack

Hood River Middle School

Hood River County SD

Hood_sch05B

Building Type		County	
School		Hood	
Street			
1602 May Street			
City	State	Zip	
Hood River	OR	97031	
Latitude		Longitude	
45.70468		121.52845	
Tracking Code		Inspection Date	
RVS in 2006		8/3/2006	



Seismicity Zone: Moderate

FEMA 154 Rapid Visual Screening Score Card

	Type	Basic Score	Vert Irreg	Plan Irreg	Pre-Code	Post-Bench	Soil C	Soil D	Soil E	RVS Score
Primary	RM1	3.6	-2	-0.5	0	0	0	-1.2	0	-0.1
Secondary		0	0	0	0	0	0	0	0	0
Tertiary		0	0	0	0	0	0	0	0	0

Hood River Middle School

Final RVS Score

Final Type

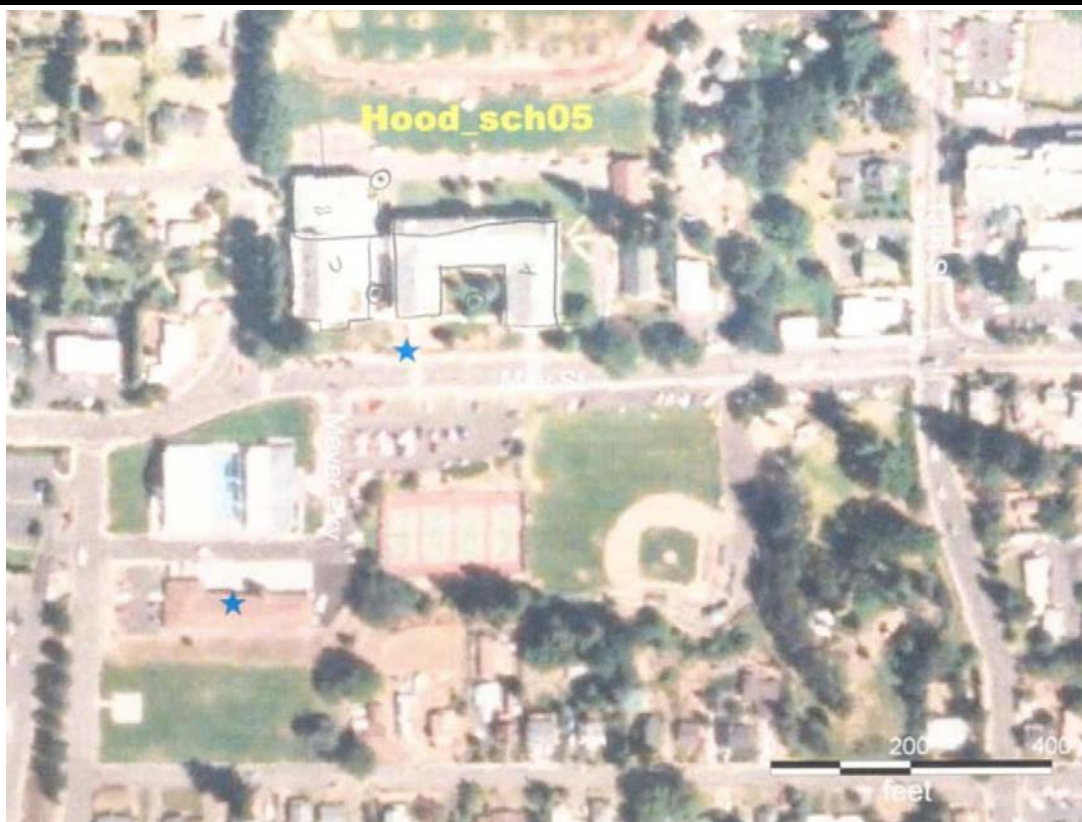
Final Score

RM1

-0.1

FEMA-154 Collapse Potential

Very High (100%)



OregonGeology

Rapid Visual Screening - Senate Bill #2 - Seismic Needs Assessment
Oregon Department of Geology and Mineral Industries

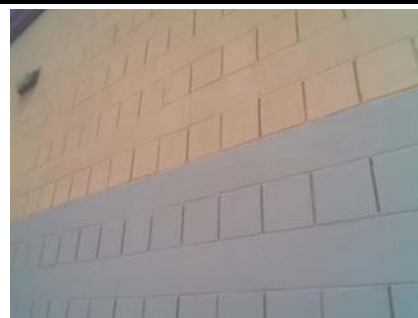
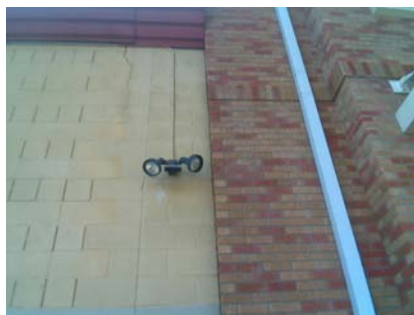
Enrollment	Year Built (Field Verified)	Year Built (Alt. Source)	Est. Decade Built
451	1979	1927	1970
Total Area (square ft)	Number of Stories	Basement	Pounding Potential
88483	1	No	Yes

Plan Irregularities	Vertical Irregularities
Reentrant Corners:L shaped (Adjacent Build/Entity)	Building On Hill or Sloped Site
None	None
None	None

Falling Hazards	Poor Conditions
None	Cracks
None	None
None	None



N Elevation View

NW Other
crack in wall from eqW Primary Structural Type
urm ?W General Site
cracks from eq

W General Site



W General Site

Hood River Middle School

Hood River County SD

Hood_sch05C

Building Type		County	
School		Hood	
Street			
1602 May Street			
City	State	Zip	
Hood River	OR	97031	
Latitude		Longitude	
45.7044		121.52845	
Tracking Code		Inspection Date	
RVS in 2006		8/3/2006	



Seismicity Zone: Moderate

FEMA 154 Rapid Visual Screening Score Card

	Type	Basic Score	Vert Irreg	Plan Irreg	Pre-Code	Post-Bench	Soil C	Soil D	Soil E	RVS Score
Primary	C2	3.6	-2	-0.5	0	1.6	0	-1.2	0	1.5
Secondary	RM1	3.6	-2	-0.5	0	2	0	-1.2	0	1.9
Tertiary		0	0	0	0	0	0	0	0	0

Hood River Middle School

Final RVS Score

Final Type

Final Score

C2

1.5

FEMA-154 Collapse Potential

Moderate (>1%)



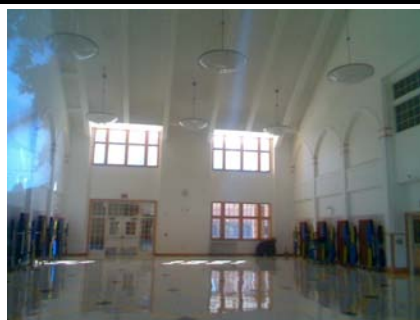
OregonGeology

Rapid Visual Screening - Senate Bill #2 - Seismic Needs Assessment
Oregon Department of Geology and Mineral Industries

Enrollment	Year Built (Field Verified)	Year Built (Alt. Source)	Est. Decade Built
451	2001	1927	2000
Total Area (square ft)	Number of Stories	Basement	Pounding Potential
88483	2	No	Yes

Plan Irregularities	Vertical Irregularities
Reentrant Corners: L shaped (Adjacent Build/Entity)	Steps in Elevation View: Single Change (Adjacent Building/Entity)
Large Diaphragm or Central Opening	Building On Hill or Sloped Site
None	None

Falling Hazards	Poor Conditions
Other: Brick Veneer	None
None	None
None	None



W General Site



S Elevation View