

Rogue Valley International-Medford

Jack_fir18A

City of Medford

Building Type		County	
Fire - City		Jackson	
Street			
3650 Biddle Rd			
City	State	Zip	
Medford	OR	97504	
Latitude		Longitude	
42.36723		122.87235	
Tracking Code		Inspection Date	
RVS in 2006		7/6/2006	



Seismicity Zone: Moderate

FEMA 154 Rapid Visual Screening Score Card

	Type	Basic Score	Vert Irreg	Plan Irreg	Pre-Code	Post-Bench	Soil C	Soil D	Soil E	RVS Score
Primary	RM1	3.6	-2	-0.5	0	0	-0.8	0	0	0.3
Secondary		0	0	0	0	0	0	0	0	0
Tertiary		0	0	0	0	0	0	0	0	0

Rogue Valley International-Medford

Final RVS Score

Final Type

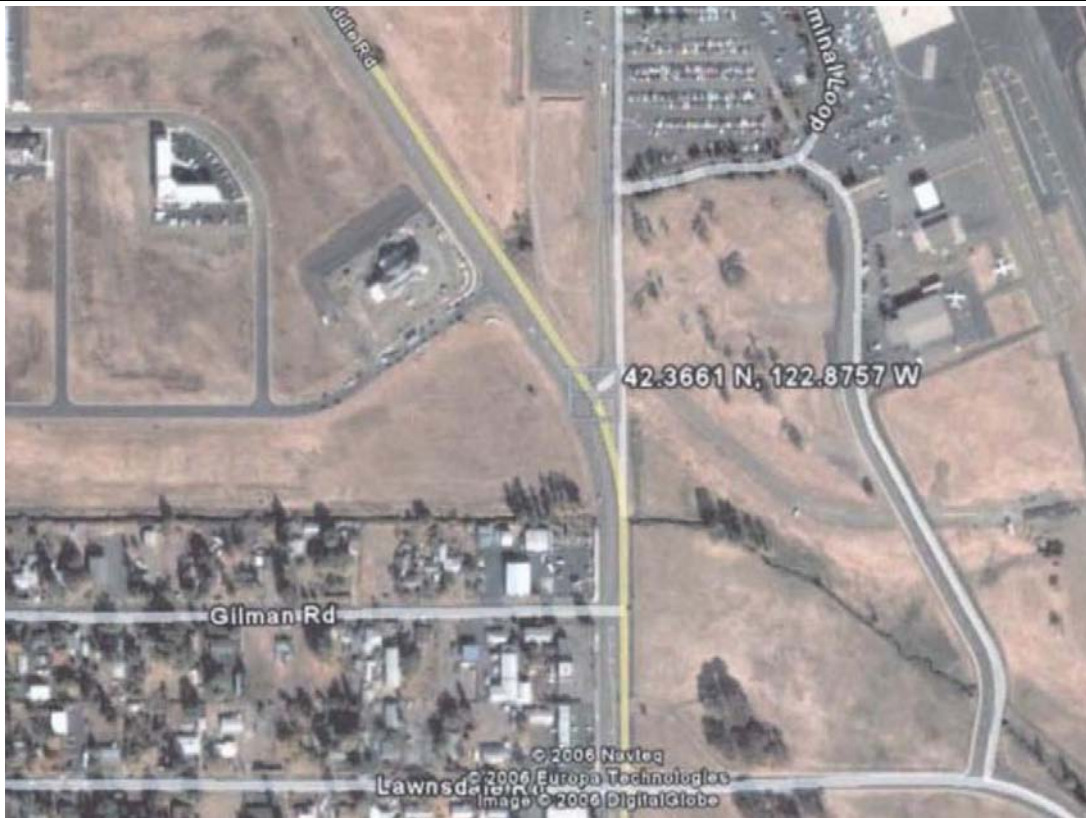
Final Score

RM1

0.3

FEMA-154 Collapse Potential

High (>10%)



OregonGeology

Rapid Visual Screening - Senate Bill #2 - Seismic Needs Assessment
Oregon Department of Geology and Mineral Industries

Enrollment	Year Built (Field Verified)	Year Built (Alt. Source)	Est. Decade Built
			1970
Total Area (square ft)	Number of Stories	Basement	Pounding Potential
	1	No	No

Plan Irregularities	Vertical Irregularities
Out of Plane Lateral-Force-Resistance Elements	Steps in Elevation View: 2 to 3 Changes
None	None
None	None

Falling Hazards	Poor Conditions
None	Cracks
None	None
None	None



SW Elevation View
also shows vertical irregularity, reentrant corner, and out of plane lateral system.



N Poor Condition
There is a crack going from the bottom to the top cutting through the masonry.



N Poor Condition

