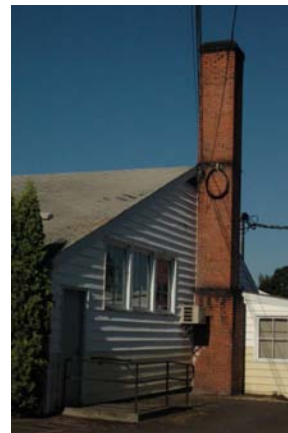


Lundy Elementary School

Lowell SD 71

Lane_sch95A

Building Type		County	
School		Lane	
Street			
45 S Moss St			
City		State	Zip
Lowell		OR	97452
Latitude		Longitude	
43.91775		122.78385	
Tracking Code		Inspection Date	
RVS in 2006		7/27/2006	



Seismicity Zone: Moderate

FEMA 154 Rapid Visual Screening Score Card

	Type	Basic Score	Vert Irreg	Plan Irreg	Pre-Code	Post-Bench	Soil C	Soil D	Soil E	RVS Score
Primary	W2	4.8	-3	-0.5	0	0	-0.8	0	0	0.5
Secondary		0	0	0	0	0	0	0	0	0
Tertiary		0	0	0	0	0	0	0	0	0

Lundy Elementary School

Final RVS Score

Final Type

Final Score

W2

0.5

FEMA-154 Collapse Potential

High (>10%)



OregonGeology

Rapid Visual Screening - Senate Bill #2 - Seismic Needs Assessment
Oregon Department of Geology and Mineral Industries

Enrollment	Year Built (Field Verified)	Year Built (Alt. Source)	Est. Decade Built
160		1942	1950
Total Area (square ft)	Number of Stories	Basement	Pounding Potential
38395	1	No	No

Plan Irregularities	Vertical Irregularities
Reentrant Corners: U shaped	Steps in Elevation View: Single Change
Reentrant Corners: Other (Adjacent Build/Entity)	Steps in Elevation View: Single Change (Adjacent Building/Entity)
None	None

Falling Hazards	Poor Conditions
Unreinforced Chimneys	None
None	None
None	None



NE Plan Irregularity Primary
Also shows a step in elevation.



NE Plan Irregularity Primary



SE Falling Hazard
Also shows a reentrant corner.



N Vertical Irregularity Secondary



Lundy Elementary School

Lane_sch95B

Lowell SD 71

Building Type		County	
School		Lane	
Street			
45 S Moss St			
City	State	Zip	
Lowell	OR	97452	
Latitude		Longitude	
43.91738		122.78377	
Tracking Code		Inspection Date	
RVS in 2006		7/27/2006	



Seismicity Zone: Moderate

FEMA 154 Rapid Visual Screening Score Card

	Type	Basic Score	Vert Irreg	Plan Irreg	Pre-Code	Post-Bench	Soil C	Soil D	Soil E	RVS Score
Primary	W2	4.8	-3	-0.5	0	0	-0.8	0	0	0.5
Secondary	RM1	3.6	-2	-0.5	0	0	-0.8	0	0	0.3
Tertiary		0	0	0	0	0	0	0	0	0

Lundy Elementary School

Final RVS Score

Final Type

Final Score

RM1

0.3

FEMA-154 Collapse Potential

High (>10%)



OregonGeology

Rapid Visual Screening - Senate Bill #2 - Seismic Needs Assessment
Oregon Department of Geology and Mineral Industries

Enrollment	Year Built (Field Verified)	Year Built (Alt. Source)	Est. Decade Built
160		1942	1960
Total Area (square ft)	Number of Stories	Basement	Pounding Potential
38395	2	No	No

Plan Irregularities	Vertical Irregularities
Reentrant Corners: Other (Adjacent Build/Entity)	Steps in Elevation View: Single Change
None	Steps in Elevation View: Single Change (Adjacent Building/Entity)
None	None

Falling Hazards	Poor Conditions
None	None
None	None
None	None



SE Vertical Irregularity Primary

S Primary Structural Type
and secondary structural type

E General Site