

Aiken Elementary School

Malh_sch01A

Ontario SD 8C

Building Type		County	
School		Malheur	
Street			
1297 West Idaho St			
City	State	Zip	
Ontario	OR	97914	
Latitude		Longitude	
44.02905		116.98403	
Tracking Code		Inspection Date	
RVS in 2006		6/30/2006	



Seismicity Zone: Moderate

FEMA 154 Rapid Visual Screening Score Card

	Type	Basic Score	Vert Irreg	Plan Irreg	Pre-Code	Post-Bench	Soil C	Soil D	Soil E	RVS Score
Primary	W2	4.8	0	0	0	0	0	-1.2	0	3.6
Secondary	RM1	3.6	0	0	0	0	0	-1.2	0	2.4
Tertiary		0	0	0	0	0	0	0	0	0

Aiken Elementary School

Final RVS Score

Final Type

Final Score

RM1

2.4

FEMA-154 Collapse Potential

Low (<1%)



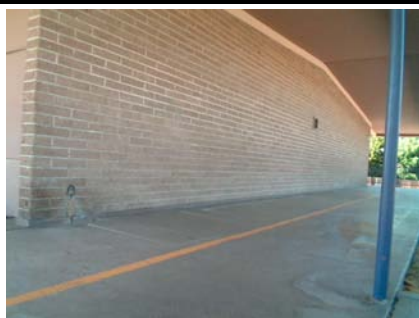
OregonGeology

Rapid Visual Screening - Senate Bill #2 - Seismic Needs Assessment
Oregon Department of Geology and Mineral Industries

Enrollment	Year Built (Field Verified)	Year Built (Alt. Source)	Est. Decade Built
276		1957	1960
Total Area (square ft)	Number of Stories	Basement	Pounding Potential
22045	1	No	No

Plan Irregularities	Vertical Irregularities
None	None
None	None
None	None

Falling Hazards	Poor Conditions
Other: General	None
Other: Brick Veneer	None
None	None



E Elevation View



S Elevation View



S Elevation View

Aiken Elementary School

Malh_sch01B

Ontario SD 8C

Building Type		County	
School		Malheur	
Street			
1297 West Idaho St			
City	State	Zip	
Ontario	OR	97914	
Latitude		Longitude	
44.02898		116.98308	
Tracking Code		Inspection Date	
RVS in 2006		6/30/2006	



Seismicity Zone: Moderate

FEMA 154 Rapid Visual Screening Score Card

	Type	Basic Score	Vert Irreg	Plan Irreg	Pre-Code	Post-Bench	Soil C	Soil D	Soil E	RVS Score
Primary	W2	4.8	0	0	0	0	0	-1.2	0	3.6
Secondary	RM1	3.6	0	0	0	0	0	-1.2	0	2.4
Tertiary	C2	3.6	0	0	0	0	0	-1.2	0	2.4

Aiken Elementary School

Final RVS Score

Final Type

Final Score

RM1

2.4

FEMA-154 Collapse Potential

Low (<1%)



OregonGeology

Rapid Visual Screening - Senate Bill #2 - Seismic Needs Assessment
Oregon Department of Geology and Mineral Industries

Enrollment	Year Built (Field Verified)	Year Built (Alt. Source)	Est. Decade Built
276		1957	1960
Total Area (square ft)	Number of Stories	Basement	Pounding Potential
22045	1	No	No

Plan Irregularities	Vertical Irregularities
None	None
None	None
None	None

Falling Hazards	Poor Conditions
Other: General	None
Other: Brick Veneer	None
None	None



W Elevation View