

# Parrish Middle School

Salem-Keizer SD 24J

Mari\_sch40A

Building Type		County	
School		Marion	
Street			
802 Capitol St NE			
City	State	Zip	
Salem	OR	97301	
Latitude		Longitude	
44.94548		123.02429	
Tracking Code		Inspection Date	
RVS in 2006		7/31/2006	



Seismicity Zone: High

## FEMA 154 Rapid Visual Screening Score Card

	Type	Basic Score	Vert Irreg	Plan Irreg	Pre-Code	Post-Bench	Soil C	Soil D	Soil E	RVS Score
Primary	C2	2.8	-1	0	-1	0	-0.4	0	0	0.4
Secondary		0	0	0	0	0	0	0	0	0
Tertiary		0	0	0	0	0	0	0	0	0

Parrish Middle School

## Final RVS Score

Final Type

Final Score

C2

0.4

FEMA-154 Collapse Potential

High (>10%)



OregonGeology

Rapid Visual Screening - Senate Bill #2 - Seismic Needs Assessment  
Oregon Department of Geology and Mineral Industries

Enrollment	Year Built (Field Verified)	Year Built (Alt. Source)	Est. Decade Built
684	1924	1924	1920
Total Area (square ft)	Number of Stories	Basement	Pounding Potential
109522	2	No	Yes

Plan Irregularities	Vertical Irregularities
Out of Plane Lateral-Force-Resistance Elements	Steps in Elevation View: Single Change (Adjacent Building/Entity)
Reentrant Corners: Other	None
None	None

Falling Hazards	Poor Conditions
Parapets: Unreinforced Over Exit	Cracks
Other: General	None
None	None



NW Falling Hazard  
WALL BETWEEN BLDGS



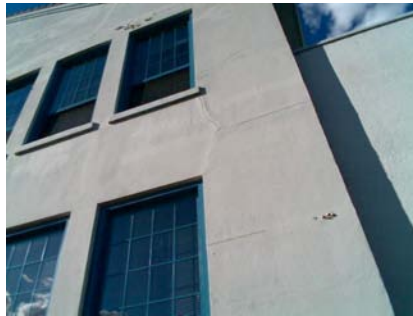
W Field Verified Year Built



S Elevation View



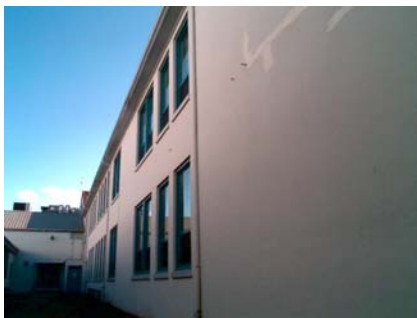
S Poor Condition



S Poor Condition



SE Vertical Irregularity Primary



NE Elevation View



# Parrish Middle School

Salem-Keizer SD 24J

Mari\_sch40B

Building Type		County	
School		Marion	
Street			
802 Capitol St NE			
City	State	Zip	
Salem	OR	97301	
Latitude		Longitude	
44.94541		123.02396	
Tracking Code		Inspection Date	
RVS in 2006		7/31/2006	



Seismicity Zone: High

## FEMA 154 Rapid Visual Screening Score Card

	Type	Basic Score	Vert Irreg	Plan Irreg	Pre-Code	Post-Bench	Soil C	Soil D	Soil E	RVS Score
Primary	C2	2.8	-1	-0.5	-1	0	-0.4	0	0	-0.1
Secondary		0	0	0	0	0	0	0	0	0
Tertiary		0	0	0	0	0	0	0	0	0

Parrish Middle School

## Final RVS Score

Final Type

Final Score

C2

-0.1

FEMA-154 Collapse Potential

Very High (100%)



OregonGeology

Rapid Visual Screening - Senate Bill #2 - Seismic Needs Assessment  
Oregon Department of Geology and Mineral Industries



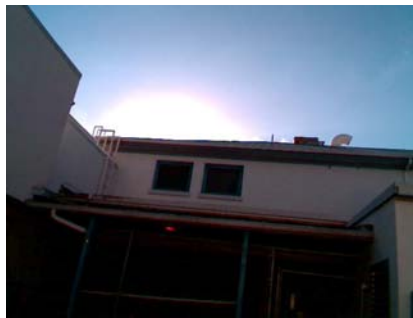
Enrollment	Year Built (Field Verified)	Year Built (Alt. Source)	Est. Decade Built
684		1924	1940
Total Area (square ft)	Number of Stories	Basement	Pounding Potential
109522	2	No	Yes

Plan Irregularities	Vertical Irregularities
Reentrant Corners: Other (Adjacent Build/Entity)	Steps in Elevation View: Very Irregular Changes (Adjacent Building/Ent
None	None
None	None

Falling Hazards	Poor Conditions
Other: Ornamental Hazard Over Exit	None
None	None
None	None



N Elevation View



E Elevation View

SE Field Verified Year Built  
CONN TO D, OLD WINDOWS

# Parrish Middle School

Salem-Keizer SD 24J

Mari\_sch40C

Building Type		County	
School		Marion	
Street			
802 Capitol St NE			
City	State	Zip	
Salem	OR	97301	
Latitude		Longitude	
44.94513		123.02409	
Tracking Code		Inspection Date	
RVS in 2006		7/31/2006	



Seismicity Zone: High

## FEMA 154 Rapid Visual Screening Score Card

	Type	Basic Score	Vert Irreg	Plan Irreg	Pre-Code	Post-Bench	Soil C	Soil D	Soil E	RVS Score
Primary	C2	2.8	-1	-0.5	-1	0	-0.4	0	0	-0.1
Secondary		0	0	0	0	0	0	0	0	0
Tertiary		0	0	0	0	0	0	0	0	0

Parrish Middle School

## Final RVS Score

Final Type

Final Score

C2

-0.1

FEMA-154 Collapse Potential

Very High (100%)



OregonGeology

Rapid Visual Screening - Senate Bill #2 - Seismic Needs Assessment  
Oregon Department of Geology and Mineral Industries

Enrollment	Year Built (Field Verified)	Year Built (Alt. Source)	Est. Decade Built
684		1924	1940
Total Area (square ft)	Number of Stories	Basement	Pounding Potential
109522	1	No	Yes

Plan Irregularities	Vertical Irregularities
Reentrant Corners: Other	Steps in Elevation View: Single Change (Adjacent Building/Entity)
None	Steps in Elevation View: 2 to 3 Changes (Adjacent Building/Entity)
None	None

Falling Hazards	Poor Conditions
None	None
None	None
None	None



S Vertical Irregularity Primary



SE Vertical Irregularity Secondary



# Parrish Middle School

Salem-Keizer SD 24J

Mari\_sch40D

Building Type		County	
School		Marion	
Street			
802 Capitol St NE			
City	State	Zip	
Salem	OR	97301	
Latitude		Longitude	
44.94571		123.02375	
Tracking Code		Inspection Date	
RVS in 2006		7/31/2006	



Seismicity Zone: High

## FEMA 154 Rapid Visual Screening Score Card

	Type	Basic Score	Vert Irreg	Plan Irreg	Pre-Code	Post-Bench	Soil C	Soil D	Soil E	RVS Score
Primary	C2	2.8	-1	-0.5	-1	0	-0.4	0	0	-0.1
Secondary	RM1	2.8	-1	-0.5	-1	0	-0.4	0	0	-0.1
Tertiary		0	0	0	0	0	0	0	0	0

Parrish Middle School

## Final RVS Score

Final Type

Final Score

C2

-0.1

## FEMA-154 Collapse Potential

Very High (100%)



OregonGeology

Rapid Visual Screening - Senate Bill #2 - Seismic Needs Assessment  
Oregon Department of Geology and Mineral Industries



Enrollment	Year Built (Field Verified)	Year Built (Alt. Source)	Est. Decade Built
684		1924	1940
Total Area (square ft)	Number of Stories	Basement	Pounding Potential
109522	1	No	Yes

Plan Irregularities	Vertical Irregularities
Reentrant Corners: Other (Adjacent Build/Entity)	Steps in Elevation View: Very Irregular Changes
Out of Plane Lateral-Force-Resistance Elements	Steps in Elevation View: Very Irregular Changes (Adjacent Building/Ent
None	None

Falling Hazards	Poor Conditions
Other: Ornamental Hazard Over Exit	None
None	None
None	None



NW Field Verified Year Built  
GLASS BLOCK



NW Vertical Irregularity Primary



NW Elevation View



N Primary Structural Type  
NO CORNER JTS - SO PIP CONC



NE Vertical Irregularity Primary



SE Secondary Structural Type  
SMALL RM PART





# Parrish Middle School

Salem-Keizer SD 24J

Mari\_sch40E

Building Type		County	
School		Marion	
Street			
802 Capitol St NE			
City	State	Zip	
Salem	OR	97301	
Latitude		Longitude	
44.94541		123.02354	
Tracking Code		Inspection Date	
RVS in 2006		7/31/2006	



Seismicity Zone: High

## FEMA 154 Rapid Visual Screening Score Card

	Type	Basic Score	Vert Irreg	Plan Irreg	Pre-Code	Post-Bench	Soil C	Soil D	Soil E	RVS Score
Primary	W2	3.8	-2	-0.5	-1	0	-0.4	0	0	-0.1
Secondary		0	0	0	0	0	0	0	0	0
Tertiary		0	0	0	0	0	0	0	0	0

Parrish Middle School

## Final RVS Score

Final Type

Final Score

W2

-0.1

FEMA-154 Collapse Potential

Very High (100%)



OregonGeology

Rapid Visual Screening - Senate Bill #2 - Seismic Needs Assessment  
Oregon Department of Geology and Mineral Industries

Enrollment	Year Built (Field Verified)	Year Built (Alt. Source)	Est. Decade Built
684		1924	1920
Total Area (square ft)	Number of Stories	Basement	Pounding Potential
109522	1	No	Yes

Plan Irregularities	Vertical Irregularities
Reentrant Corners: Other (Adjacent Build/Entity)	Steps in Elevation View: 2 to 3 Changes (Adjacent Building/Entity)
None	None
None	None

Falling Hazards	Poor Conditions
None	None
None	None
None	None



NE Elevation View

# Parrish Middle School

Salem-Keizer SD 24J

Mari\_sch40F

Building Type		County	
School		Marion	
Street			
802 Capitol St NE			
City	State	Zip	
Salem	OR	97301	
Latitude		Longitude	
44.94504		123.02365	
Tracking Code		Inspection Date	
RVS in 2006		7/31/2006	



Seismicity Zone: High

## FEMA 154 Rapid Visual Screening Score Card

	Type	Basic Score	Vert Irreg	Plan Irreg	Pre-Code	Post-Bench	Soil C	Soil D	Soil E	RVS Score
Primary	RM1	2.8	0	-0.5	0	0	-0.4	0	0	1.9
Secondary	S3	3.2	0	-0.5	0	0	-0.4	0	0	2.3
Tertiary	PC1	2.6	0	-0.5	0	0	-0.4	0	0	1.7

Parrish Middle School

## Final RVS Score

Final Type

Final Score

PC1

1.7

FEMA-154 Collapse Potential

Moderate (>1%)



OregonGeology

Rapid Visual Screening - Senate Bill #2 - Seismic Needs Assessment  
Oregon Department of Geology and Mineral Industries



Enrollment	Year Built (Field Verified)	Year Built (Alt. Source)	Est. Decade Built
684		1924	1990
Total Area (square ft)	Number of Stories	Basement	Pounding Potential
109522	1	No	Yes

Plan Irregularities	Vertical Irregularities
Reentrant Corners: Other	Steps in Elevation View: Single Change
Torsion: Eccentric Stiffness	Steps in Elevation View: 2 to 3 Changes (Adjacent Building/Entity)
None	None

Falling Hazards	Poor Conditions
None	None
None	None
None	None



SE Plan Irregularity Primary



N Elevation View



N Vertical Irregularity Secondary

