

Turner Elementary School

Mari_sch51A

Cascade SD 5

Building Type		County	
School		Marion	
Street			
7800 School Ave			
City	State	Zip	
Turner	OR	97392	
Latitude		Longitude	
44.84287		122.94757	
Tracking Code		Inspection Date	
RVS in 2006		7/25/2006	



Seismicity Zone: High

FEMA 154 Rapid Visual Screening Score Card

	Type	Basic Score	Vert Irreg	Plan Irreg	Pre-Code	Post-Bench	Soil C	Soil D	Soil E	RVS Score
Primary	C2	2.8	-1	-0.5	-1	0	-0.4	0	0	-0.1
Secondary	URM	1.8	-1	-0.5	-0.2	0	-0.4	0	0	-0.3
Tertiary		0	0	0	0	0	0	0	0	0

Turner Elementary School

Final RVS Score

Final Type

Final Score

URM

-0.3

FEMA-154 Collapse Potential

Very High (100%)



OregonGeology

Rapid Visual Screening - Senate Bill #2 - Seismic Needs Assessment
Oregon Department of Geology and Mineral Industries

Turner Elementary School

Mari_sch51A

Enrollment	Year Built (Field Verified)	Year Built (Alt. Source)	Est. Decade Built
238	1922	1922	1920
Total Area (square ft)	Number of Stories	Basement	Pounding Potential
25378	2	No	Yes

Plan Irregularities	Vertical Irregularities
Reentrant Corners: Other	Steps in Elevation View: 2 to 3 Changes
None	Steps in Elevation View: 2 to 3 Changes (Adjacent Building/Entity)
None	None

Falling Hazards	Poor Conditions
None	None
None	None
None	None



W General Site



W Falling Hazard



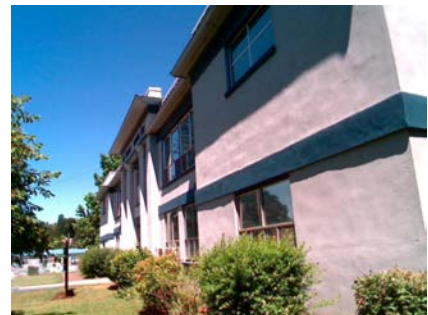
NW Falling Hazard



NW Pounding Potential



W Field Verified Year Built



S General Site



E Falling Hazard



SE Falling Hazard



E General Site



N General Site



N Primary Structural Type



NW Vertical Irregularity Primary

Turner Elementary School

Mari_sch51B

Cascade SD 5

Building Type		County	
School		Marion	
Street			
7800 School Ave			
City	State	Zip	
Turner	OR	97392	
Latitude		Longitude	
44.84318		122.94752	
Tracking Code		Inspection Date	
RVS in 2006		7/25/2006	



Seismicity Zone: High

FEMA 154 Rapid Visual Screening Score Card

	Type	Basic Score	Vert Irreg	Plan Irreg	Pre-Code	Post-Bench	Soil C	Soil D	Soil E	RVS Score
Primary	W2	3.8	-2	-0.5	0	0	-0.4	0	0	0.9
Secondary		0	0	0	0	0	0	0	0	0
Tertiary		0	0	0	0	0	0	0	0	0

Turner Elementary School

Final RVS Score

Final Type

Final Score

W2

0.9

FEMA-154 Collapse Potential

High (>10%)



OregonGeology

Rapid Visual Screening - Senate Bill #2 - Seismic Needs Assessment
Oregon Department of Geology and Mineral Industries

Enrollment	Year Built (Field Verified)	Year Built (Alt. Source)	Est. Decade Built
238		1922	1950
Total Area (square ft)	Number of Stories	Basement	Pounding Potential
25378	1	No	Yes

Plan Irregularities	Vertical Irregularities
Reentrant Corners:L shaped (Adjacent Build/Entity)	Steps in Elevation View: Single Change
None	None
None	None

Falling Hazards	Poor Conditions
None	None
None	None
None	None



N General Site



NW General Site



NW General Site



SW Building Quality



SW Pounding Potential



Turner Elementary School

Cascade SD 5

Mari_sch51C

Building Type		County	
School		Marion	
Street			
7800 School Ave			
City	State	Zip	
Turner	OR	97392	
Latitude		Longitude	
44.84253		122.94765	
Tracking Code		Inspection Date	
RVS in 2006		7/25/2006	



Seismicity Zone: High

FEMA 154 Rapid Visual Screening Score Card

	Type	Basic Score	Vert Irreg	Plan Irreg	Pre-Code	Post-Bench	Soil C	Soil D	Soil E	RVS Score
Primary	S3	3.2	0	0	0	0	-0.4	0	0	2.8
Secondary		0	0	0	0	0	0	0	0	0
Tertiary		0	0	0	0	0	0	0	0	0

Turner Elementary School

Final RVS Score

Final Type

Final Score

S3

2.8

FEMA-154 Collapse Potential

Low (<1%)



OregonGeology

Rapid Visual Screening - Senate Bill #2 - Seismic Needs Assessment
Oregon Department of Geology and Mineral Industries

Enrollment	Year Built (Field Verified)	Year Built (Alt. Source)	Est. Decade Built
238	1974	1922	1970
Total Area (square ft)	Number of Stories	Basement	Pounding Potential
25378	1	No	No

Plan Irregularities	Vertical Irregularities
None	None
None	None
None	None

Falling Hazards	Poor Conditions
None	None
None	None
None	None



W Primary Structural Type



N General Site

