

Reynolds SD 7

A photograph of a long, single-story red building with a dark roof. The building features large windows and a sign that reads "1000". In front of the building is a landscaped area with various shrubs and a paved walkway. The sky is blue with some clouds.

Building Type		County	
School		Multnomah	
Street			
19501 Ne Davis St			
City		State	Zip
Portland		OR	97230
Latitude		Longitude	
45.52346		122.46213	
Tracking Code		Inspection Date	
RVS in 2006		7/18/2006	

Seismicity Zone: High

Davis Elementary School

	Type	Basic Score	Vert Irreg	Plan Irreg	Pre-Code	Post-Bench	Soil C	Soil D	Soil E	RVS Score
Primary	C2	2.8	-1	-0.5	0	0	0	0	0	1.3
Secondary	PC1	2.6	0	-0.5	0	0	0	0	0	2.1
Tertiary	S2	3	-1.5	-0.5	0	0	0	0	0	1

Final RVS Score

Final Type

Final Score

S2

1

FEMA-154 Collapse Potential

High (>10%)



OregonGeology

Rapid Visual Screening - Senate Bill #2 - Seismic Needs Assessment
Oregon Department of Geology and Mineral Industries

Enrollment	Year Built (Field Verified)	Year Built (Alt. Source)	Est. Decade Built
477		1959	1960
Total Area (square ft)	Number of Stories	Basement	Pounding Potential
44700	1	No	Yes

Plan Irregularities	Vertical Irregularities
Reentrant Corners: Other	Steps in Elevation View: 2 to 3 Changes
Reentrant Corners: Other (Adjacent Build/Entity)	Steps in Elevation View: 2 to 3 Changes (Adjacent Building/Entity)
None	None

Falling Hazards	Poor Conditions
None	None
None	None
None	None



S Elevation View

S Secondary Structural Type
UNUSUAL DETAILINGSW Secondary Structural Type
CORNER WING DETAILS Secondary Structural Type
EDGE ROOF GLULAMS ON WING

E Elevation View



E Secondary Structural Type

E Secondary Structural Type
CONC EDGE DETAIL @ CORRIDOR DOORE Plan Irregularity Primary
1 RM ADDN IN COURTYARDNE Primary Structural Type
THIS WALL APPEARS TO BE C.I.P. W/ VERT POUR JTS



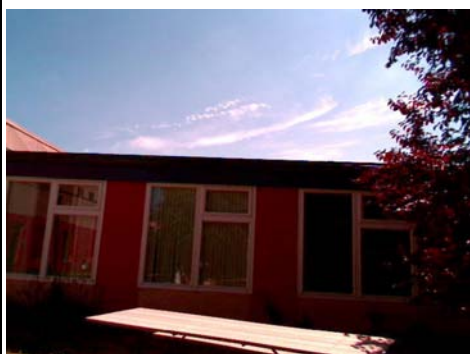
N Primary Structural Type
JT DETAIL W/ REVEAL AND VERT (POUR?) CRACK



NW Elevation View



W Secondary Structural Type



W Elevation View
NOTE BOLTS



Davis Elementary School

Reynolds SD 7

Mult_sch143B

Building Type		County	
School		Multnomah	
Street			
19501 Ne Davis St			
City		State	Zip
Portland		OR	97230
Latitude		Longitude	
45.52358		122.46256	
Tracking Code		Inspection Date	
RVS in 2006		7/18/2006	



Seismicity Zone: High

FEMA 154 Rapid Visual Screening Score Card

	Type	Basic Score	Vert Irreg	Plan Irreg	Pre-Code	Post-Bench	Soil C	Soil D	Soil E	RVS Score
Primary	C2	2.8	-1	-0.5	0	0	0	0	0	1.3
Secondary		0	0	0	0	0	0	0	0	0
Tertiary		0	0	0	0	0	0	0	0	0

Davis Elementary School

Final RVS Score

Final Type

Final Score

C2

1.3

FEMA-154 Collapse Potential

Moderate (>1%)



OregonGeology

Rapid Visual Screening - Senate Bill #2 - Seismic Needs Assessment
Oregon Department of Geology and Mineral Industries

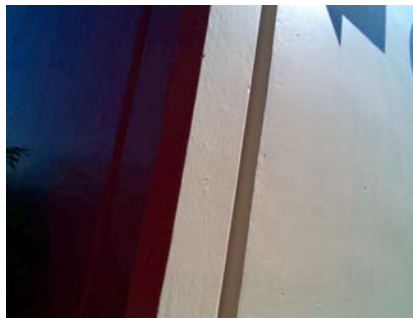
Enrollment	Year Built (Field Verified)	Year Built (Alt. Source)	Est. Decade Built
472		1959	1960
Total Area (square ft)	Number of Stories	Basement	Pounding Potential
44700	1	No	Yes

Plan Irregularities	Vertical Irregularities
Reentrant Corners: Other (Adjacent Build/Entity)	Steps in Elevation View: Single Change (Adjacent Building/Entity)
None	None
None	None

Falling Hazards	Poor Conditions
None	None
None	None
None	None



SW Elevation View

SW Primary Structural Type
SOLID CONC AT JT - REVEAL

Davis Elementary School

Reynolds SD 7

Mult_sch143C

Building Type		County	
School		Multnomah	
Street			
19501 Ne Davis St			
City	State	Zip	
Portland	OR	97230	
Latitude		Longitude	
45.52379		122.4624	
Tracking Code		Inspection Date	
RVS in 2006		7/18/2006	



Seismicity Zone: High

FEMA 154 Rapid Visual Screening Score Card

	Type	Basic Score	Vert Irreg	Plan Irreg	Pre-Code	Post-Bench	Soil C	Soil D	Soil E	RVS Score
Primary	RM1	2.8	-1	-0.5	0	0	0	0	0	1.3
Secondary		0	0	0	0	0	0	0	0	0
Tertiary		0	0	0	0	0	0	0	0	0

Davis Elementary School

Final RVS Score

Final Type

Final Score

RM1

1.3

FEMA-154 Collapse Potential

Moderate (>1%)



OregonGeology

Rapid Visual Screening - Senate Bill #2 - Seismic Needs Assessment
Oregon Department of Geology and Mineral Industries

Enrollment	Year Built (Field Verified)	Year Built (Alt. Source)	Est. Decade Built
477		1959	1990
Total Area (square ft)	Number of Stories	Basement	Pounding Potential
44700	1	No	Yes

Plan Irregularities	Vertical Irregularities
Reentrant Corners: Other	Steps in Elevation View: Single Change
Reentrant Corners: Other (Adjacent Build/Entity)	Steps in Elevation View: 2 to 3 Changes (Adjacent Building/Entity)
None	None

Falling Hazards	Poor Conditions
None	None
None	None
None	None



NE Vertical Irregularity Secondary



NW Vertical Irregularity Primary

NW Seismic Upgrade
SAME DETAIL HERE - SMALL GAP

S Seismic Upgrade

