

Troutdale Elementary School

Mult_sch145A

Reynolds SD 7

Building Type		County	
School		Multnomah	
Street			
648 Se Harlow			
City	State	Zip	
Troutdale	OR	97060	
Latitude	Longitude		
45.53632	122.38599		
Tracking Code	Inspection Date		
RVS in 2006	7/19/2006		



Seismicity Zone: High

FEMA 154 Rapid Visual Screening Score Card

	Type	Basic Score	Vert Irreg	Plan Irreg	Pre-Code	Post-Bench	Soil C	Soil D	Soil E	RVS Score
Primary	C2	2.8	-1	-0.5	-1	0	0	-0.6	0	-0.3
Secondary		0	0	0	0	0	0	0	0	0
Tertiary		0	0	0	0	0	0	0	0	0

Troutdale Elementary School

Final RVS Score

Final Type

Final Score

C2

-0.3

FEMA-154 Collapse Potential

Very High (100%)



OregonGeology

Rapid Visual Screening - Senate Bill #2 - Seismic Needs Assessment
Oregon Department of Geology and Mineral Industries

Troutdale Elementary School

Mult_sch145A

Enrollment	Year Built (Field Verified)	Year Built (Alt. Source)	Est. Decade Built
476	1926	1926	1920
Total Area (square ft)	Number of Stories	Basement	Pounding Potential
53824	1	Yes	Yes

Plan Irregularities	Vertical Irregularities
Reentrant Corners: T shaped	Steps in Elevation View: 2 to 3 Changes
Reentrant Corners: Other	Steps in Elevation View: Single Change (Adjacent Building/Entity)
None	None

Falling Hazards	Poor Conditions
Other: Ornamental Hazard Over Exit	Cracks
None	Poor Concrete
None	None



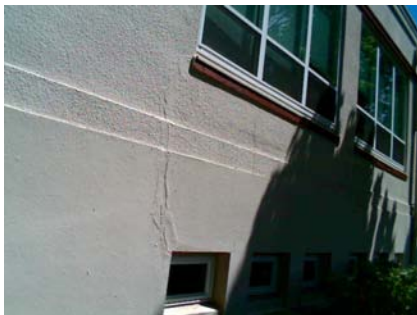
SW Elevation View



W Building Quality



W Building Quality



W Building Quality



W Building Quality



W Building Quality



W Falling Hazard



W Plan Irregularity Secondary



W Building Quality



NE Elevation View



E Building Quality



NE Elevation View



NE Building Quality



E Building Quality



SE Building Quality



E Elevation View



NE Elevation View



Troutdale Elementary School

Mult_sch145B

Reynolds SD 7

Building Type		County	
School		Multnomah	
Street			
648 Se Harlow			
City	State	Zip	
Troutdale	OR	97060	
Latitude		Longitude	
45.5369		122.38599	
Tracking Code		Inspection Date	
RVS in 2006		7/19/2006	



Seismicity Zone: High

FEMA 154 Rapid Visual Screening Score Card

	Type	Basic Score	Vert Irreg	Plan Irreg	Pre-Code	Post-Bench	Soil C	Soil D	Soil E	RVS Score
Primary	C2	2.8	-1	-0.5	0	0	0	-0.6	0	0.7
Secondary	RM1	2.8	-1	-0.5	-1	0	0	-0.6	0	-0.3
Tertiary		0	0	0	0	0	0	0	0	0

Troutdale Elementary School

Final RVS Score

Final Type

Final Score

RM1

-0.3

FEMA-154 Collapse Potential

Very High (100%)



OregonGeology

Rapid Visual Screening - Senate Bill #2 - Seismic Needs Assessment
Oregon Department of Geology and Mineral Industries

Troutdale Elementary School

Mult_sch145B

Enrollment	Year Built (Field Verified)	Year Built (Alt. Source)	Est. Decade Built
476	1949	1926	1940
Total Area (square ft)	Number of Stories	Basement	Pounding Potential
53824	1	No	Yes

Plan Irregularities	Vertical Irregularities
Reentrant Corners: Other	Steps in Elevation View: Very Irregular Changes
Reentrant Corners: Other (Adjacent Build/Entity)	Steps in Elevation View: Single Change (Adjacent Building/Entity)
None	None

Falling Hazards	Poor Conditions
Other: Brick Veneer	None
Other: Ornamental Hazard Over Exit	None
None	None



SW Primary Structural Type



W Falling Hazard



W Elevation View



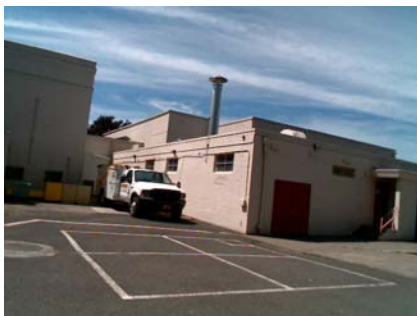
W Falling Hazard



NE Elevation View



NE Vertical Irregularity Primary



E Plan Irregularity Primary