

Wilkes Elementary School

Reynolds SD 7

Mult_sch146A

Building Type		County	
School		Multnomah	
Street			
17020 Ne Wilkes Rd			
City	State	Zip	
Portland	OR	97230	
Latitude		Longitude	
45.54183		122.48871	
Tracking Code		Inspection Date	
RVS in 2006		7/14/2006	



Seismicity Zone: High

FEMA 154 Rapid Visual Screening Score Card

	Type	Basic Score	Vert Irreg	Plan Irreg	Pre-Code	Post-Bench	Soil C	Soil D	Soil E	RVS Score
Primary	W2	3.8	-2	-0.5	-1	0	0	0	0	0.3
Secondary		0	0	0	0	0	0	0	0	0
Tertiary		0	0	0	0	0	0	0	0	0

Wilkes Elementary School

Final RVS Score

Final Type

Final Score

W2

0.3

FEMA-154 Collapse Potential

High (>10%)



OregonGeology

Rapid Visual Screening - Senate Bill #2 - Seismic Needs Assessment
Oregon Department of Geology and Mineral Industries

Enrollment	Year Built (Field Verified)	Year Built (Alt. Source)	Est. Decade Built
465		1913	1910
Total Area (square ft)	Number of Stories	Basement	Pounding Potential
38560	1	Yes	Yes

Plan Irregularities	Vertical Irregularities
Reentrant Corners: Other (Adjacent Build/Entity)	Steps in Elevation View: 2 to 3 Changes (Adjacent Building/Entity)
None	None
None	None

Falling Hazards	Poor Conditions
None	None
None	None
None	None



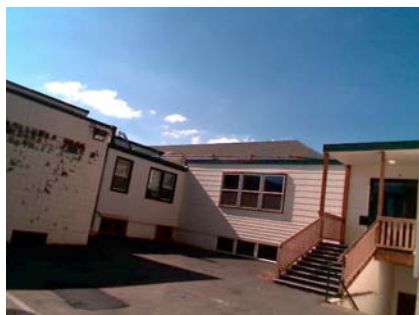
N Basement



N Other
CONN TO B



N General Site
CONN TO B



SE Elevation View



SW Plan Irregularity Primary

Wilkes Elementary School

Reynolds SD 7

Mult_sch146B

Building Type		County	
School		Multnomah	
Street			
17020 Ne Wilkes Rd			
City	State	Zip	
Portland	OR	97230	
Latitude		Longitude	
45.54176		122.48805	
Tracking Code		Inspection Date	
RVS in 2006		7/14/2006	



Seismicity Zone: High

FEMA 154 Rapid Visual Screening Score Card

	Type	Basic Score	Vert Irreg	Plan Irreg	Pre-Code	Post-Bench	Soil C	Soil D	Soil E	RVS Score
Primary	W2	3.8	-2	0	0	0	0	0	0	1.8
Secondary		0	0	0	0	0	0	0	0	0
Tertiary		0	0	0	0	0	0	0	0	0

Wilkes Elementary School

Final RVS Score

Final Type

Final Score

W2

1.8

FEMA-154 Collapse Potential

Moderate (>1%)



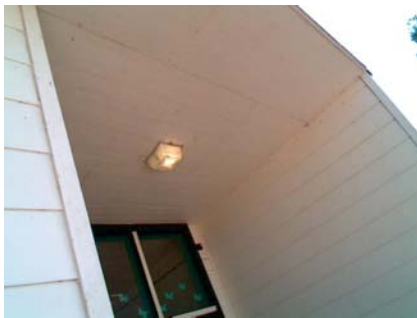
OregonGeology

Rapid Visual Screening - Senate Bill #2 - Seismic Needs Assessment
Oregon Department of Geology and Mineral Industries

Enrollment	Year Built (Field Verified)	Year Built (Alt. Source)	Est. Decade Built
465		1913	1970
Total Area (square ft)	Number of Stories	Basement	Pounding Potential
38560	1	Yes	Yes

Plan Irregularities	Vertical Irregularities
Out of Plane Lateral-Force-Resistance Elements	Steps in Elevation View: Single Change
Reentrant Corners: Other (Adjacent Build/Entity)	Steps in Elevation View: Single Change (Adjacent Building/Entity)
None	None

Falling Hazards	Poor Conditions
Other: General	None
None	None
None	None



N Building Quality



NE Elevation View



SE Elevation View



S Falling Hazard



S Plan Irregularity Primary

Wilkes Elementary School

Reynolds SD 7

Mult_sch146C

Building Type		County	
School		Multnomah	
Street			
17020 Ne Wilkes Rd			
City	State	Zip	
Portland	OR	97230	
Latitude		Longitude	
45.54166		122.48867	
Tracking Code		Inspection Date	
RVS in 2006		7/14/2006	



Seismicity Zone: High

FEMA 154 Rapid Visual Screening Score Card

	Type	Basic Score	Vert Irreg	Plan Irreg	Pre-Code	Post-Bench	Soil C	Soil D	Soil E	RVS Score
Primary	W2	3.8	-2	-0.5	0	0	0	0	0	1.3
Secondary		0	0	0	0	0	0	0	0	0
Tertiary		0	0	0	0	0	0	0	0	0

Wilkes Elementary School

Final RVS Score

Final Type

Final Score

W2

1.3

FEMA-154 Collapse Potential

Moderate (>1%)



OregonGeology

Rapid Visual Screening - Senate Bill #2 - Seismic Needs Assessment
Oregon Department of Geology and Mineral Industries

Enrollment	Year Built (Field Verified)	Year Built (Alt. Source)	Est. Decade Built
465		1913	1970
Total Area (square ft)	Number of Stories	Basement	Pounding Potential
38560	1	No	Yes

Plan Irregularities	Vertical Irregularities
Reentrant Corners: Other (Adjacent Build/Entity)	Steps in Elevation View: 2 to 3 Changes
None	Steps in Elevation View: 2 to 3 Changes (Adjacent Building/Entity)
None	None

Falling Hazards	Poor Conditions
None	None
None	None
None	None



S Elevation View



SW Primary Structural Type



W Vertical Irregularity Primary

Wilkes Elementary School

Reynolds SD 7

Mult_sch146D

Building Type		County	
School		Multnomah	
Street			
17020 Ne Wilkes Rd			
City	State	Zip	
Portland	OR	97230	
Latitude		Longitude	
45.54157		122.48847	
Tracking Code		Inspection Date	
RVS in 2006		7/14/2006	



Seismicity Zone: High

FEMA 154 Rapid Visual Screening Score Card

	Type	Basic Score	Vert Irreg	Plan Irreg	Pre-Code	Post-Bench	Soil C	Soil D	Soil E	RVS Score
Primary	RM1	2.8	-1	-0.5	0	0	0	0	0	1.3
Secondary		0	0	0	0	0	0	0	0	0
Tertiary		0	0	0	0	0	0	0	0	0

Wilkes Elementary School

Final RVS Score

Final Type

Final Score

RM1

1.3

FEMA-154 Collapse Potential

Moderate (>1%)



OregonGeology

Rapid Visual Screening - Senate Bill #2 - Seismic Needs Assessment
Oregon Department of Geology and Mineral Industries

Enrollment	Year Built (Field Verified)	Year Built (Alt. Source)	Est. Decade Built
465		1913	1970
Total Area (square ft)	Number of Stories	Basement	Pounding Potential
38560	1	No	Yes

Plan Irregularities	Vertical Irregularities
Reentrant Corners: Other (Adjacent Build/Entity)	Steps in Elevation View: Single Change (Adjacent Building/Entity)
None	None
None	None

Falling Hazards	Poor Conditions
None	None
None	None
None	None



SE Primary Structural Type