

# Hauton B Lee Middle School

Reynolds SD 7

Mult\_sch147A

Building Type		County	
School		Multnomah	
Street			
1121 NE 172nd Ave			
City	State	Zip	
Portland	OR	97230	
Latitude		Longitude	
45.53149		122.4877	
Tracking Code		Inspection Date	
RVS in 2006		7/17/2006	



Seismicity Zone: High

## FEMA 154 Rapid Visual Screening Score Card

	Type	Basic Score	Vert Irreg	Plan Irreg	Pre-Code	Post-Bench	Soil C	Soil D	Soil E	RVS Score
Primary	PC1	2.6	0	-0.5	0	0	-0.4	0	0	1.7
Secondary		0	0	0	0	0	0	0	0	0
Tertiary		0	0	0	0	0	0	0	0	0

Hauton B Lee Middle School

## Final RVS Score

Final Type

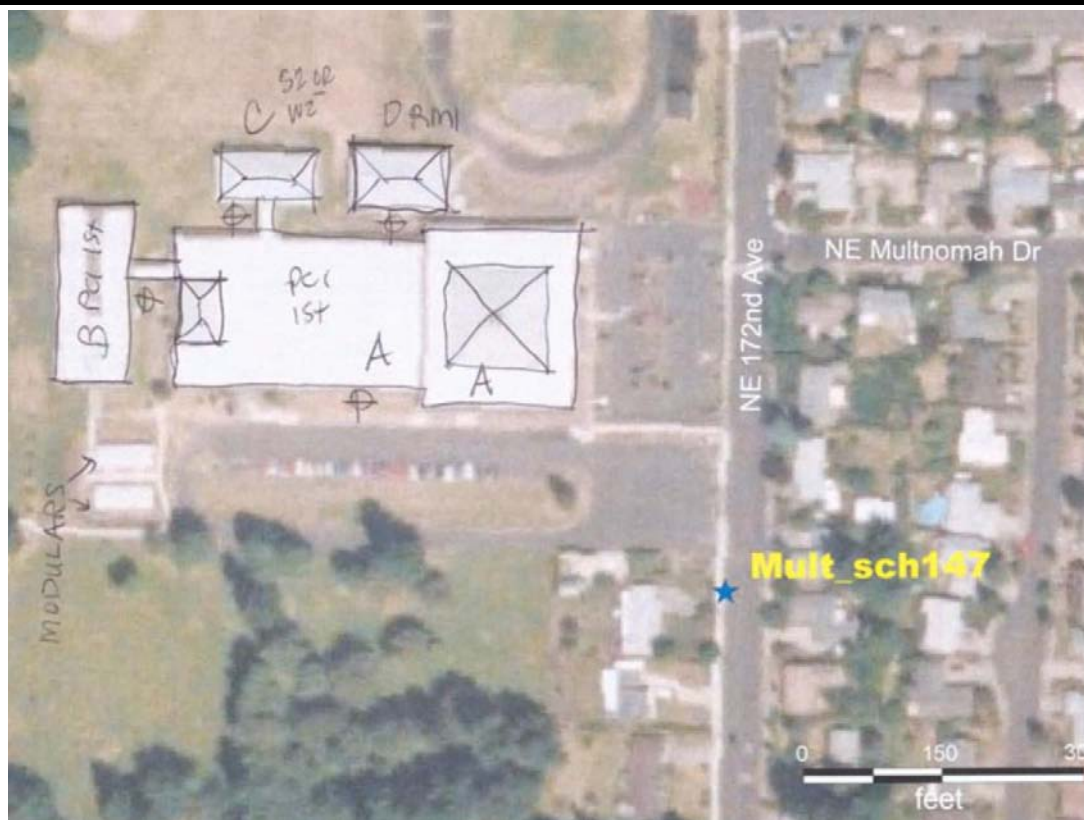
Final Score

PC1

1.7

FEMA-154 Collapse Potential

Moderate (>1%)



OregonGeology

Rapid Visual Screening - Senate Bill #2 - Seismic Needs Assessment  
Oregon Department of Geology and Mineral Industries

# Hauton B Lee Middle School

Mult\_sch147A

Enrollment	Year Built (Field Verified)	Year Built (Alt. Source)	Est. Decade Built
825	1966	1966	1960
Total Area (square ft)	Number of Stories	Basement	Pounding Potential
94525	1	No	Yes

Plan Irregularities	Vertical Irregularities
Reentrant Corners: Other	Steps in Elevation View: 2 to 3 Changes
Reentrant Corners: Other (Adjacent Build/Entity)	Steps in Elevation View: 2 to 3 Changes (Adjacent Building/Entity)
None	None

Falling Hazards	Poor Conditions
None	None
None	None
None	None



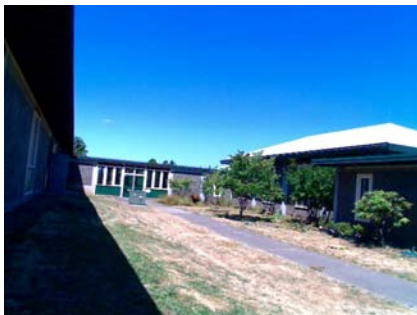
S Plan Irregularity Primary



S Primary Structural Type



S Field Verified Year Built



W Plan Irregularity Secondary



NW Elevation View



N Elevation View



NW Elevation View



E Elevation View



# Hauton B Lee Middle School

Reynolds SD 7

Mult\_sch147B

Building Type		County	
School		Multnomah	
Street			
1121 NE 172nd Ave			
City	State	Zip	
Portland	OR	97230	
Latitude		Longitude	
45.53154		122.48884	
Tracking Code		Inspection Date	
RVS in 2006		7/17/2006	



Seismicity Zone: High

## FEMA 154 Rapid Visual Screening Score Card

	Type	Basic Score	Vert Irreg	Plan Irreg	Pre-Code	Post-Bench	Soil C	Soil D	Soil E	RVS Score
Primary	PC1	2.6	0	-0.5	0	0	-0.4	0	0	1.7
Secondary		0	0	0	0	0	0	0	0	0
Tertiary		0	0	0	0	0	0	0	0	0

Hauton B Lee Middle School

## Final RVS Score

Final Type

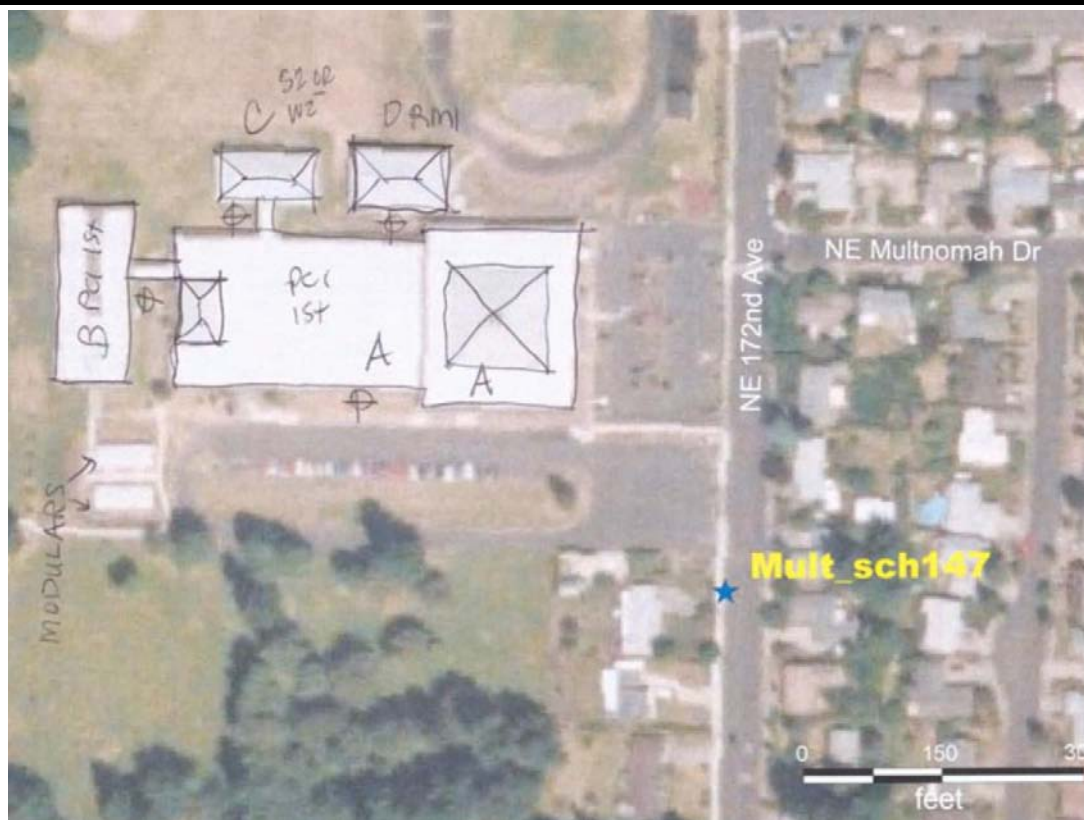
Final Score

PC1

1.7

## FEMA-154 Collapse Potential

Moderate (>1%)



OregonGeology

Rapid Visual Screening - Senate Bill #2 - Seismic Needs Assessment  
Oregon Department of Geology and Mineral Industries

Enrollment	Year Built (Field Verified)	Year Built (Alt. Source)	Est. Decade Built
825		1966	1960
Total Area (square ft)	Number of Stories	Basement	Pounding Potential
94525	1	No	Yes

Plan Irregularities	Vertical Irregularities
Reentrant Corners: Other (Adjacent Build/Entity)	Steps in Elevation View: Single Change (Adjacent Building/Entity)
None	None
None	None

Falling Hazards	Poor Conditions
None	None
None	None
None	None



SW Elevation View



N Elevation View

# Hauton B Lee Middle School

Reynolds SD 7

Mult\_sch147C

Building Type		County	
School		Multnomah	
Street			
1121 NE 172nd Ave			
City	State	Zip	
Portland	OR	97230	
Latitude		Longitude	
45.53187		122.48812	
Tracking Code		Inspection Date	
RVS in 2006		7/17/2006	



Seismicity Zone: High

## FEMA 154 Rapid Visual Screening Score Card

	Type	Basic Score	Vert Irreg	Plan Irreg	Pre-Code	Post-Bench	Soil C	Soil D	Soil E	RVS Score
Primary	W2	3.8	-2	-0.5	0	2.4	-0.4	0	0	3.3
Secondary	S2	3	-1.5	-0.5	0	0	-0.4	0	0	0.6
Tertiary		0	0	0	0	0	0	0	0	0

Hauton B Lee Middle School

## Final RVS Score

Final Type

Final Score

S2

0.6

FEMA-154 Collapse Potential

High (>10%)



OregonGeology

Rapid Visual Screening - Senate Bill #2 - Seismic Needs Assessment  
Oregon Department of Geology and Mineral Industries

Enrollment	Year Built (Field Verified)	Year Built (Alt. Source)	Est. Decade Built
825		1966	1980
Total Area (square ft)	Number of Stories	Basement	Pounding Potential
94525	1	No	Yes

Plan Irregularities	Vertical Irregularities
Reentrant Corners: Other (Adjacent Build/Entity)	Steps in Elevation View: Single Change (Adjacent Building/Entity)
None	None
None	None

Falling Hazards	Poor Conditions
None	None
None	None
None	None



NW Elevation View

SE Plan Irregularity Primary





# Hauton B Lee Middle School

Reynolds SD 7

Mult\_sch147D

Building Type		County	
School		Multnomah	
Street			
1121 NE 172nd Ave			
City	State	Zip	
Portland	OR	97230	
Latitude		Longitude	
45.53188		122.48756	
Tracking Code		Inspection Date	
RVS in 2006		7/17/2006	



Seismicity Zone: High

## FEMA 154 Rapid Visual Screening Score Card

	Type	Basic Score	Vert Irreg	Plan Irreg	Pre-Code	Post-Bench	Soil C	Soil D	Soil E	RVS Score
Primary	RM1	2.8	-1	0	0	0	-0.4	0	0	1.4
Secondary		0	0	0	0	0	0	0	0	0
Tertiary		0	0	0	0	0	0	0	0	0

Hauton B Lee Middle School

## Final RVS Score

Final Type

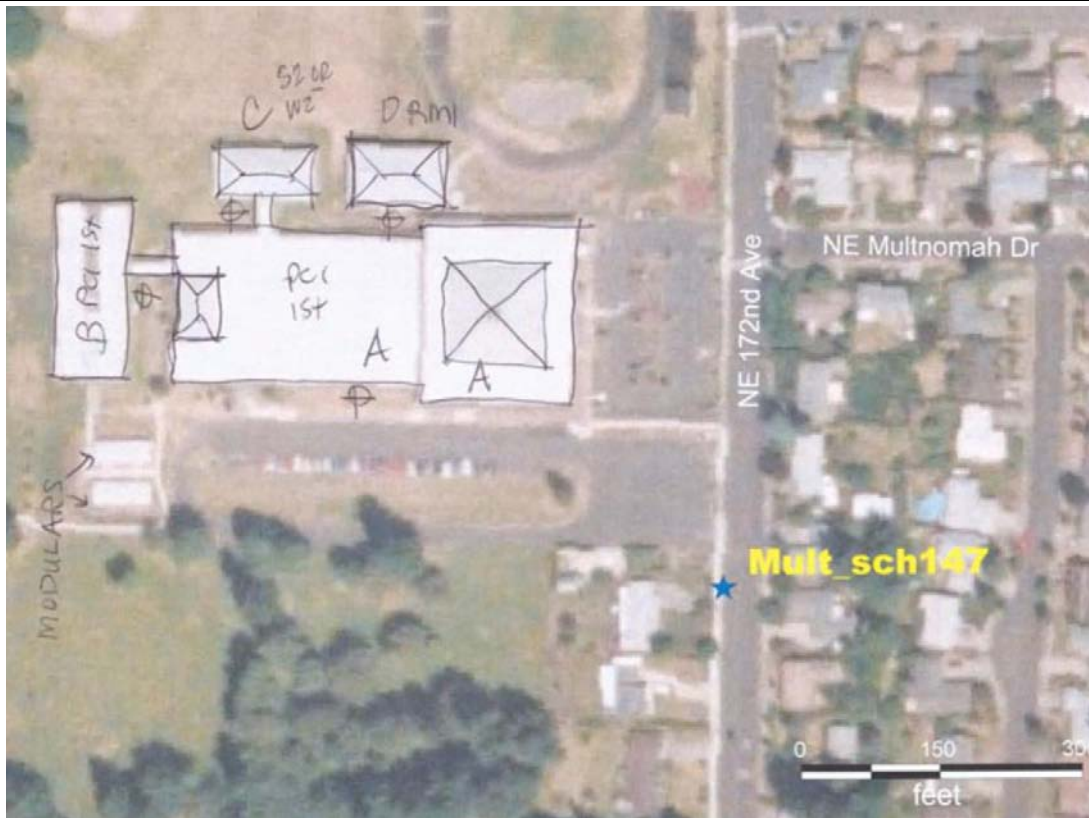
Final Score

RM1

1.4

FEMA-154 Collapse Potential

Moderate (>1%)



OregonGeology

Rapid Visual Screening - Senate Bill #2 - Seismic Needs Assessment  
Oregon Department of Geology and Mineral Industries

Enrollment	Year Built (Field Verified)	Year Built (Alt. Source)	Est. Decade Built
825		1966	1980
Total Area (square ft)	Number of Stories	Basement	Pounding Potential
94525	1	No	No

Plan Irregularities	Vertical Irregularities
None	Steps in Elevation View: Single Change
None	None
None	None

Falling Hazards	Poor Conditions
None	None
None	None
None	None



N General Site



E Elevation View  
SLOPE AT NE CORNER IS 5 CMU COURSES