

Henry Hill Elementary School

Central SD 13J

Polk_sch03A

Building Type		County	
School		Polk	
Street			
750 5th St			
City		State	Zip
Independence		OR	97351
Latitude		Longitude	
44.84679		123.19079	
Tracking Code		Inspection Date	
RVS in 2006		7/20/2006	



Seismicity Zone: High

FEMA 154 Rapid Visual Screening Score Card

	Type	Basic Score	Vert Irreg	Plan Irreg	Pre-Code	Post-Bench	Soil C	Soil D	Soil E	RVS Score
Primary	W2	3.8	-2	-0.5	-1	0	0	-0.8	0	-0.5
Secondary	C2	2.8	-1	-0.5	-1	0	0	-0.6	0	-0.3
Tertiary		0	0	0	0	0	0	0	0	0

Henry Hill Elementary School

Final RVS Score

Final Type

Final Score

W2

-0.5

FEMA-154 Collapse Potential

Very High (100%)



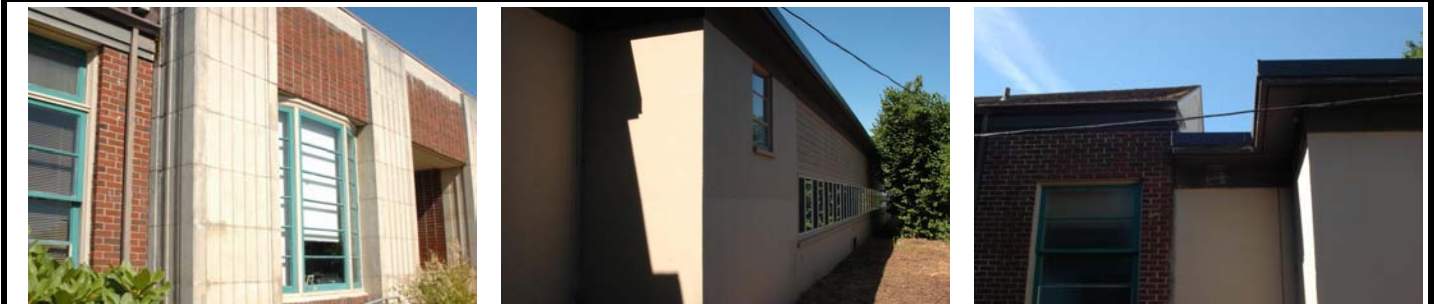
OregonGeology

Rapid Visual Screening - Senate Bill #2 - Seismic Needs Assessment
Oregon Department of Geology and Mineral Industries

Enrollment	Year Built (Field Verified)	Year Built (Alt. Source)	Est. Decade Built
297		1938	1940
Total Area (square ft)	Number of Stories	Basement	Pounding Potential
37640	1	No	No

Plan Irregularities	Vertical Irregularities
Out of Plane Lateral-Force-Resistance Elements	Steps in Elevation View: Single Change (Adjacent Building/Entity)
Reentrant Corners: E Shaped	Steps in Elevation View: Single Change
Reentrant Corners: Other (Adjacent Build/Entity)	None

Falling Hazards	Poor Conditions
Parapets: Unreinforced Over Exit	None
None	None
None	None



E Plan Irregularity Primary

NE Plan Irregularity Primary

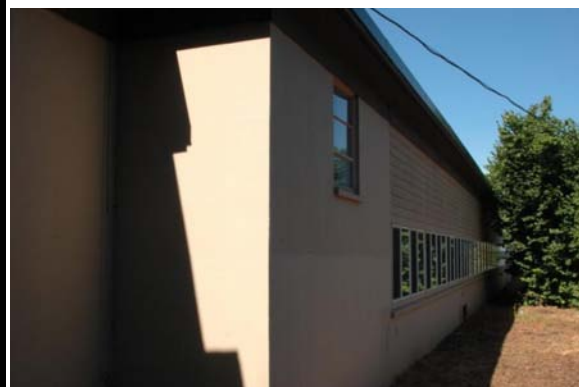
NE Vertical Irregularity Primary

Henry Hill Elementary School

Polk_sch03B

Central SD 13J

Building Type		County	
School		Polk	
Street			
750 5th St			
City		State	Zip
Independence		OR	97351
Latitude		Longitude	
44.84696		123.19121	
Tracking Code		Inspection Date	
RVS in 2006		7/20/2006	



Seismicity Zone: High

FEMA 154 Rapid Visual Screening Score Card

	Type	Basic Score	Vert Irreg	Plan Irreg	Pre-Code	Post-Bench	Soil C	Soil D	Soil E	RVS Score
Primary	C2	2.8	-1	-0.5	0	0	0	-0.6	0	0.7
Secondary		0	0	0	0	0	0	0	0	0
Tertiary		0	0	0	0	0	0	0	0	0

Henry Hill Elementary School

Final RVS Score

Final Type

Final Score

C2

0.7

FEMA-154 Collapse Potential

High (>10%)



OregonGeology

Rapid Visual Screening - Senate Bill #2 - Seismic Needs Assessment
Oregon Department of Geology and Mineral Industries

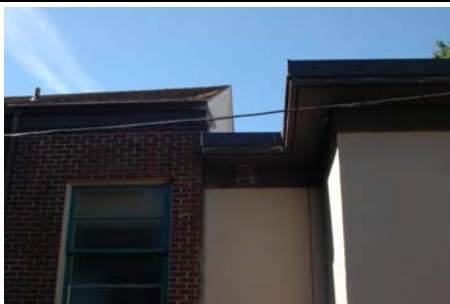
Henry Hill Elementary School

Polk_sch03B

Enrollment	Year Built (Field Verified)	Year Built (Alt. Source)	Est. Decade Built
297		1938	1950
Total Area (square ft)	Number of Stories	Basement	Pounding Potential
37640	1	No	No

Plan Irregularities	Vertical Irregularities
Reentrant Corners: U shaped (Adjacent Build/Entity)	Steps in Elevation View: Single Change (Adjacent Building/Entity)
None	None
None	None

Falling Hazards	Poor Conditions
None	None
None	None
None	None



N Vertical Irregularity Primary



S Plan Irregularity Primary
step in elevation



S General Site

Henry Hill Elementary School

Polk_sch03C

Central SD 13J

Building Type		County	
School		Polk	
Street			
750 5th St			
City	State	Zip	
Independence	OR	97351	
Latitude		Longitude	
44.84693		123.19152	
Tracking Code		Inspection Date	
RVS in 2006		7/20/2006	



Seismicity Zone: High

FEMA 154 Rapid Visual Screening Score Card

	Type	Basic Score	Vert Irreg	Plan Irreg	Pre-Code	Post-Bench	Soil C	Soil D	Soil E	RVS Score
Primary	C2	2.8	0	0	0	0	0	-0.6	0	2.2
Secondary		0	0	0	0	0	0	0	0	0
Tertiary		0	0	0	0	0	0	0	0	0

Henry Hill Elementary School

Final RVS Score

Final Type

Final Score

C2

2.2

FEMA-154 Collapse Potential

Low (<1%)



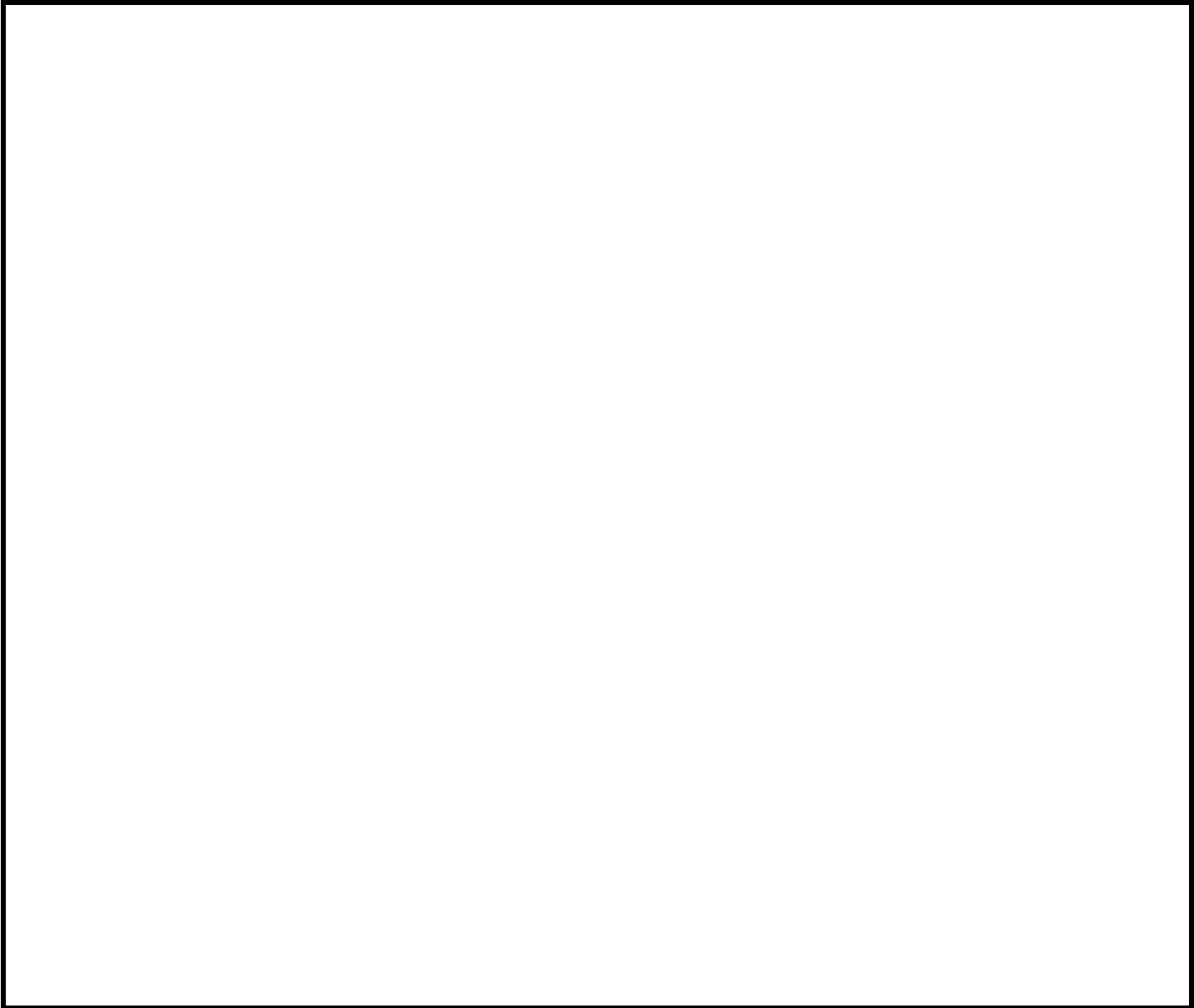
OregonGeology

Rapid Visual Screening - Senate Bill #2 - Seismic Needs Assessment
Oregon Department of Geology and Mineral Industries

Enrollment	Year Built (Field Verified)	Year Built (Alt. Source)	Est. Decade Built
297		1938	1960
Total Area (square ft)	Number of Stories	Basement	Pounding Potential
37640	1	No	No

Plan Irregularities	Vertical Irregularities
None	None
None	None
None	None

Falling Hazards	Poor Conditions
None	None
None	None
None	None



Henry Hill Elementary School

Polk_sch03D

Central SD 13J

Building Type		County	
School		Polk	
Street			
750 5th St			
City		State	Zip
Independence		OR	97351
Latitude		Longitude	
44.84693		123.19171	
Tracking Code		Inspection Date	
RVS in 2006		7/20/2006	



Seismicity Zone: High

FEMA 154 Rapid Visual Screening Score Card

	Type	Basic Score	Vert Irreg	Plan Irreg	Pre-Code	Post-Bench	Soil C	Soil D	Soil E	RVS Score
Primary	RM1	2.8	0	0	0	0	0	-0.6	0	2.2
Secondary	C2	2.8	0	0	0	0	0	-0.6	0	2.2
Tertiary		0	0	0	0	0	0	0	0	0

Henry Hill Elementary School

Final RVS Score

Final Type

Final Score

RM1

2.2

FEMA-154 Collapse Potential

Low (<1%)



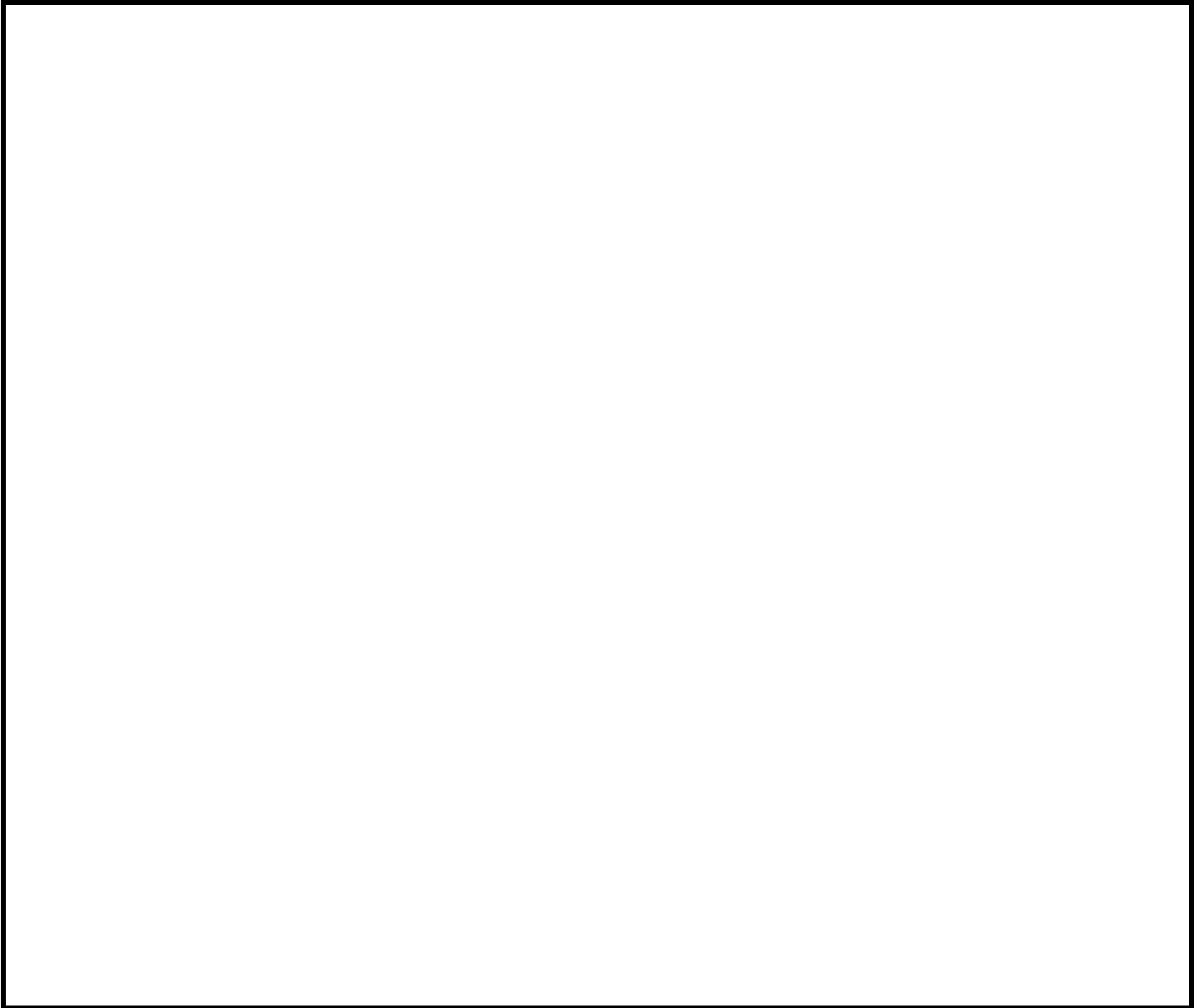
OregonGeology

Rapid Visual Screening - Senate Bill #2 - Seismic Needs Assessment
Oregon Department of Geology and Mineral Industries

Enrollment	Year Built (Field Verified)	Year Built (Alt. Source)	Est. Decade Built
297		1938	1980
Total Area (square ft)	Number of Stories	Basement	Pounding Potential
37640	1	No	No

Plan Irregularities	Vertical Irregularities
None	None
None	None
None	None

Falling Hazards	Poor Conditions
None	None
None	None
None	None



Henry Hill Elementary School

Polk_sch03E

Central SD 13J

Building Type		County	
School		Polk	
Street			
750 5th St			
City		State	Zip
Independence		OR	97351
Latitude		Longitude	
44.84636		123.19071	
Tracking Code		Inspection Date	
RVS in 2006		7/20/2006	



Seismicity Zone: High

FEMA 154 Rapid Visual Screening Score Card

	Type	Basic Score	Vert Irreg	Plan Irreg	Pre-Code	Post-Bench	Soil C	Soil D	Soil E	RVS Score
Primary	W2	3.8	0	-0.5	-1	0	0	-0.8	0	1.5
Secondary	RM1	2.8	0	-0.5	-1	0	0	-0.6	0	0.7
Tertiary		0	0	0	0	0	0	0	0	0

Henry Hill Elementary School

Final RVS Score

Final Type

Final Score

RM1

0.7

FEMA-154 Collapse Potential

High (>10%)



OregonGeology

Rapid Visual Screening - Senate Bill #2 - Seismic Needs Assessment
Oregon Department of Geology and Mineral Industries

Enrollment	Year Built (Field Verified)	Year Built (Alt. Source)	Est. Decade Built
297		1938	1940
Total Area (square ft)	Number of Stories	Basement	Pounding Potential
37640	1	No	No

Plan Irregularities	Vertical Irregularities
Reentrant Corners: Other	None
None	None
None	None

Falling Hazards	Poor Conditions
None	None
None	None
None	None

