

Nehalem Elementary School

Till_sch06A

Neah-Kah-Nie SD 56

Building Type	County	
School	Tillamook	
Street		
36300 8th St		
City	State	Zip
Nehalem	OR	97131
Latitude	Longitude	
45.72114	123.89535	
Tracking Code	Inspection Date	
SER & RVS2006	9/6/2006	



Seismicity Zone: Very High

FEMA 154 Rapid Visual Screening Score Card

	Type	Basic Score	Vert Irreg	Plan Irreg	Pre-Code	Post-Bench	Soil C	Soil D	Soil E	RVS Score
Primary	C2	2.8	0	-0.5	-1	0	-0.4	0	0	0.9
Secondary	URM	1.8	0	-0.5	-0.2	0	-0.4	0	0	0.7
Tertiary		0	0	0	0	0	0	0	0	0

Nehalem Elementary School

Final RVS Score

Final Type

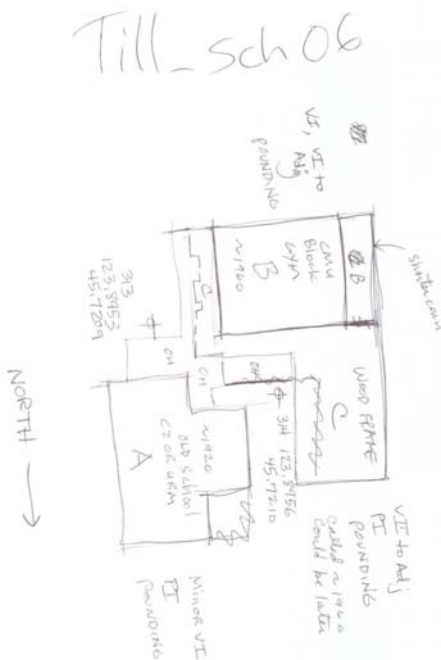
Final Score

URM

0.7

FEMA-154 Collapse Potential

High (>10%)



OregonGeology

Rapid Visual Screening - Senate Bill #2 - Seismic Needs Assessment
Oregon Department of Geology and Mineral Industries

Nehalem Elementary School

Till_sch06A

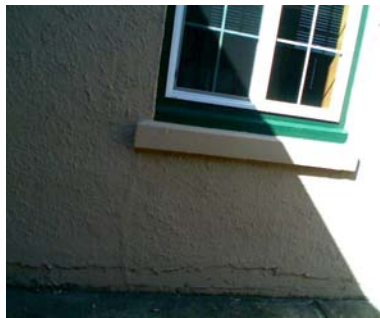
Enrollment	Year Built (Field Verified)	Year Built (Alt. Source)	Est. Decade Built
171		1927	1920
Total Area (square ft)	Number of Stories	Basement	Pounding Potential
40400	2	No	Yes

Plan Irregularities	Vertical Irregularities
Reentrant Corners: T shaped	Steps in Elevation View: 2 to 3 Changes
None	None
None	None

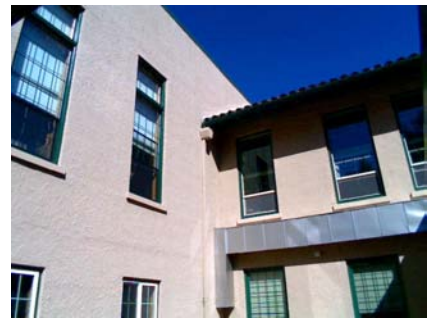
Falling Hazards	Poor Conditions
None	None
None	None
None	None



SE Elevation View



S Primary Structural Type
conc crack @ window



SE Vertical Irregularity Primary



SW Plan Irregularity Primary

Neah-Kah-Nie SD 56

Till sch06B

Building Type	County	
School	Tillamook	
Street		
36300 8th St		
City	State	Zip
Nehalem	OR	97131
Latitude	Longitude	
45.72085	123.89567	
Tracking Code	Inspection Date	
SER & RVS2006	9/6/2006	



Seismicity Zone: Very High

FEMA 154 Rapid Visual Screening Score Card

	Type	Basic Score	Vert Irreg	Plan Irreg	Pre-Code	Post-Bench	Soil C	Soil D	Soil E	RVS Score
Primary	RM1	2.8	-1	0	0	0	-0.4	0	0	1.4
Secondary		0	0	0	0	0	0	0	0	0
Tertiary		0	0	0	0	0	0	0	0	0

Nehalem Elementary School

Final RVS Score

Final Type

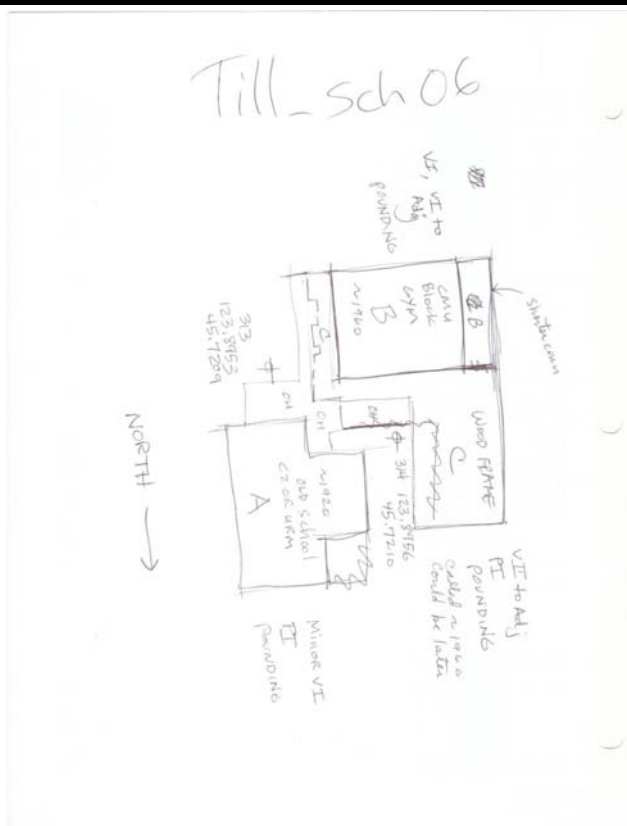
Final Score

RM1

1.4

FEMA-154 Collapse Potential

Moderate (>1%)



OregonGeology

Rapid Visual Screening - Senate Bill #2 - Seismic Needs Assessment
Oregon Department of Geology and Mineral Industries

Enrollment	Year Built (Field Verified)	Year Built (Alt. Source)	Est. Decade Built
171		1927	1960
Total Area (square ft)	Number of Stories	Basement	Pounding Potential
40400	1	No	Yes

Plan Irregularities	Vertical Irregularities
None	Steps in Elevation View: 2 to 3 Changes (Adjacent Building/Entity)
None	Steps in Elevation View: Single Change
None	None

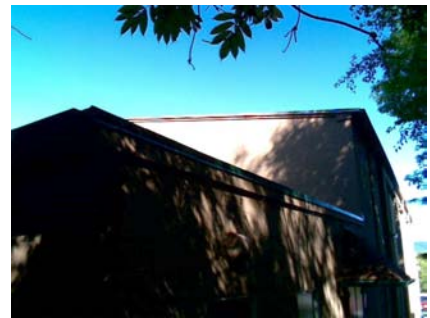
Falling Hazards	Poor Conditions
None	None
None	None
None	None



N Vertical Irregularity Primary
b beyond c



W Elevation View
conn to c



SW Vertical Irregularity Secondary



Neah-Kah-Nie SD 56

Till sch06C

Building Type		County	
School		Tillamook	
Street			
36300 8th St			
City		State	Zip
Nehalem		OR	97131
Latitude		Longitude	
45.72106		123.89585	
Tracking Code		Inspection Date	
SER & RVS2006		9/6/2006	



Seismicity Zone: Very High

FEMA 154 Rapid Visual Screening Score Card

	Type	Basic Score	Vert Irreg	Plan Irreg	Pre-Code	Post-Bench	Soil C	Soil D	Soil E	RVS Score
Primary	W2	3.8	-2	-0.5	0	2.4	-0.4	0	0	3.3
Secondary		0	0	0	0	0	0	0	0	0
Tertiary		0	0	0	0	0	0	0	0	0

Nehalem Elementary School

Final RVS Score

Final Type

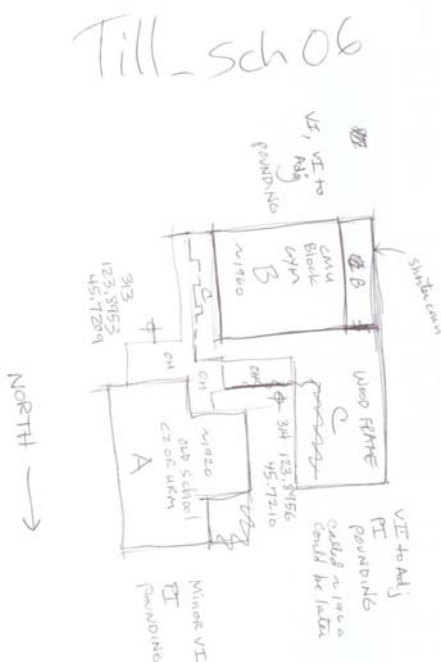
Final Score

W2

3.3

FEMA-154 Collapse Potential

Low (<1%)



OregonGeology

Rapid Visual Screening - Senate Bill #2 - Seismic Needs Assessment
Oregon Department of Geology and Mineral Industries

Enrollment	Year Built (Field Verified)	Year Built (Alt. Source)	Est. Decade Built
171		1927	1980
Total Area (square ft)	Number of Stories	Basement	Pounding Potential
40400	1	No	Yes

Plan Irregularities	Vertical Irregularities
Reentrant Corners: Other	Steps in Elevation View: 2 to 3 Changes (Adjacent Building/Entity)
None	None
None	None

Falling Hazards	Poor Conditions
Other: General	None
None	None
None	None



NE Plan Irregularity Primary



NW Elevation View

N Falling Hazard
cmu feature

E Plan Irregularity Primary

